

The Official Publication of the Pennsylvania State Snowmobile Association

# Keystone Snowmobiler

January 2018  
Volume 29 Issue 1

[www.pasnow.org](http://www.pasnow.org)

PRSRT STD  
U.S. POSTAGE  
**PAID**  
EPHRATA, PA  
PERMIT NO. 44



## SNOWMOBILE CLUB OF ADAMS COUNTY



Happy  
New Year

The Snowmobile Club of Adams County (SCAC) recently held their annual trail clean up day at Michaux State Forest near Caledonia Pa. The group of 9 snowmobilers met on Sunday morning, Nov. 12, and began cleaning up the Ram Hill trail at Big Flats. The group was able to cut unnecessary limbs, falling trees, and clear large rocks from the trail. This connector trail is heavily used to help link the north and south hills in the Big Flat parking area.

Hopefully our work will make traveling by snowmobile easier and safer .

The day closed with hamburgers and hot dogs on the grill. The club appreciates everyone's help and at this point we will begin to "think snow".

*Tom Krout*





John W. Hight



**www.pasnow.org**

**THE KEYSTONE SNOWMOBILER**  
published monthly by  
**HARTMAN PUBLISHING COMPANY**  
2286 Black Rock Road  
Hanover, PA 17331  
Phone & FAX: (717) 633-5051  
E-Mail: keystonesnowmobiler@comcast.net

**EDITORS: Peggy & Henry Hartman**  
**MATERIALS DEADLINE:**  
**10th of month**  
**preceding issue**

## REGIONAL DIRECTORS



(Co.)

A black and white portrait of a man with short dark hair, wearing a dark polo shirt. He is looking directly at the camera. A small white tag is visible on his shirt.

4 

A black and white portrait of a woman with short, dark, wavy hair, wearing a dark top. She is looking slightly to the right of the camera with a gentle smile.

## PSSA BOARD COMMITTEES

**Executive, Finance, Trails, Public  
Affairs, Fund Raising, Safety, Website  
Executive Committee - Elected**

**Finance Committee**

Elizabeth Krug (2019), Chair

**Fund Raising Committee**

Charles Walter (2018), Chair

Gary Bates  
Dick East (2018)

### Safety Committee

Clint Elias  
Harrison Langley

## Website Committee

Kathy Woolever - website administrator  
Tim Holtz (2018)

Larry Martin (2018), Chair  
Dave McCarty (2020)

**Don Weaver**

**Membership/Finances Administrators:**

Kathy Woolever  
Maura Donley  
PSSA  
42 West Main Street  
Palmyra, PA 17078  
1-717-461-7761  
EMAIL: [member@pasnow.org](mailto:member@pasnow.org)

**Grants Administrator**

Lori Elliott  
908 North 2nd Street  
Harrisburg, PA 17102  
1-717-236-2050  
EMAIL: [grants@pasnow.org](mailto:grants@pasnow.org)

## INFORMATION

**PSSA Website:**  
[www.pasnow.org](http://www.pasnow.org)

**PSSA Facebook:**  
[www.facebook.com/pasnow](http://www.facebook.com/pasnow)  
"Pennsylvania Snowmobiling"

**EMAIL:** [member@pasnow.org](mailto:member@pasnow.org)  
(717-461-7761)  
[grants@pasnow.org](mailto:grants@pasnow.org)  
(717-236-2050 ext. 127)  
[info@pasnow.org](mailto:info@pasnow.org)  
(Toll Free — 1-888-411-PSSA (7772))  
[keystonesnowmobiler@comcast.net](mailto:keystonesnowmobiler@comcast.net)  
(717-633-5051)

**American Council of Snowmobile Associations  
(ACSA)**  
[www.snowmobilers.org](http://www.snowmobilers.org)

**International Snowmobile Manufacturers  
Association (ISMA)**  
[www.snowmobile.org](http://www.snowmobile.org)

**This issue mailed on or before December 21st.**



**DISCLAIMER:** The contents of advertisements which appear in the Keystone Snowmobiler are solely the responsibility of the advertisers. Appearances of an advertisement in the Keystone Snowmobiler does not constitute a recommendation or endorsement by the Keystone Snowmobiler, Hartman Publishing Company, Pennsylvania State Snowmobile Association, Henry Hartman, Peggy Hartman, or any staff member or contributor, of the goods or services offered therein.

**RENEW OR JOIN PSSA ON  
OUR WEBSITE  
[www.pasnow.org](http://www.pasnow.org)**

# MOVING FORWARD



**Happy Holidays!  
Happy New Year!**

**Snow is falling in the West. Let's hope this continues throughout the snowmobile season and throughout the snowmobile areas. Safety is our number one priority.**

Stay on the trails and obey all laws.

Although PSSA announces the opening of trails you should always check with the forest, park or clubs where you intend to ride. Our website (pasnow.org) contains links to most areas of the state. The map tab contains information on all the clubs throughout the state. Click

on a region and the club information will be there. Snocams also show the conditions of the area.

**Ride safe.**

PSSA is making plans to host several groomer training classes for members next year. The last training classes were held several years ago. Grooming trails is a science and depends on conditions not just the amount of snow on the trails. Thank the groomers who donate their time to groom late at night and early in the morning.

Don't forget to make a few simple New Year's goals. Remember to volunteer. Join a club and help keep the trails safe.

**Many blessings for a safe and happy Holiday.**

**Think Snow! (Let's do a SNOW dance!)**

*Liz Krug, President*

**Mark your Calendar:  
Membership Meeting –  
May 5, 2018 –  
Ramada Conference and Golf  
Hotel- University Park (same as  
this year)**

## NEWS FROM PSSA'S GRANTS ADMINISTRATOR



**Happy New Year!**  
Here's hoping for a snowmobiling season of bountiful snow! In addition to needing snow for a fun snowmobiling season, we will need snow for our "Snowmobiling in Pennsylvania – Year Two" video project.

In preparation for PSSA's and Pennsylvania's program for the national TV show, "Snow Trails TV" on the Destination America channel, "Video Mike" Grant and his crew this year will be on the snowmobile trails in the counties of Clearfield, Elk, Erie, Potter, Wayne, Carbon, and Huntingdon, showcasing what Pennsylvania has to offer to snowmobilers. Our program will be aired two times in the fall of 2018.

Thank you to the following sponsors of this project for year two:

- International Snowmobile Manufacturers Association
- VisitErie
- Presque Isle Downs and Casino
- Huntingdon County Visitors Bureau
- Lumber Heritage Region of PA and PA Wilds Center
- Pocono Mountains Visitors Bureau

We are excited about this project! It will again be a great opportunity to bring into the national spotlight all parties involved in these areas. Our video crew will be available in February, so I will coordinate their itinerary with the visitors' bureaus and snowmobile clubs in these areas. Club volunteers did a wonderful job guiding the crew on the trails in our year one project. Be sure to hope for snow and watch for the 30-minute program next fall.

We are happy to report that grant awards from the April 2017 round of DCNR grant applications have been announced. PSSA was awarded an \$8,000 grant from the restricted Snowmobile Fund to provide groomer training and assist with snowmobile safety classes. Hopefully, the paperwork can be processed in time for training to occur before the 2019 season.

**Happy snowmobiling!**

*Lori Elliott, Grants Administrator*

## A QUOTE TO NOTE

The measure of leadership is not the quality of the head, but the tone of the body. The signs of outstanding leadership appear primarily among the followers.

—Max De Pree, Businessman and Writer

# www.pasnow.org



**Call for  
pricing & promotions  
on remaining  
inventory!!**

**NEIMANS EQUIPMENT & GARAGE**  
704 E. Canal Rd., Dover, PA  
(717) - 292 - 2101

**POLARIS®**  
ATV's Ranger RZR  
Snowmobiles

**ski-doo®  
can-am®**  
Snowmobiles ATV's  
Sea-Doo Spyder

**SPORTS 'N TURF  
of Pottstown**

2568 New Schuylkill Road  
Spring City, PA 19475  
610-495-7122

**SPORTS 'N TURF  
of Lancaster**

4126 Oregon Pike  
Ephrata PA 17522  
717-859-5455  
Toll Free 866-791-6384



# WOLF ADMINISTRATION OFFERS HOTLINE AND TRAINING OPPORTUNITIES FOR SNOWMOBILING AND ATV ENTHUSIASTS

Harrisburg, PA December 12, 2017 With the arrival of winter weather across the state, Department of Conservation and Natural Resources Secretary Cindy Adams Dunn is reminding snowmobiling enthusiasts that updated trail conditions for snowmobile and ATV riding enthusiasts are available by calling the department.

"If you are a Bucks County resident thinking about trailering snowmobiles to Potter County, you want to know what you'll find

when you get there," Dunn said. "Thanks to our snowmobile hotlines, information on natural snow depth, trail conditions and other key details are just a phone call away. Also tailored to geographic areas, DCNR's website offer riders another source of vital information."

Following the December 9 close of Pennsylvania's regular deer hunting season, snowmobiling began Monday and closes April 1, 2018, in state forests and parks where conditions permit. This season, snowmobile riders in Pennsylvania's state forests and parks have access to almost 3,000 miles of marked joint-use state forest roads, closed roads, and trails in 18 of the state's 20 state forest districts and in 32 state parks.

Winter ATV trails stretching more than 170 miles in seven state forest districts also opened Monday.

DCNR is providing condition updates on its toll-free snowmobile hotlines, 1-877-SNOMBLE (1-877-766-6253); or 717-787-5651. Recorded messages, providing reports on snow depths and trail conditions across the state, are

updated midday every Tuesday and Thursday. DCNR also provides weather and condition reports online for state parks and forests.

Snowmobile enthusiasts are reminded bureau snowmobile maps are updated to reflect changes linked to gas-drilling operations and possible storm damage.

Additionally, the Bureau of Forestry's ATV/Snowmobile Safety instructors will soon begin offering training to both adult and young riders. Effective January 1, 2018, the certified snowmobile and ATV instruction will be expanded beyond the former age limitation of under 16.

Snowmobile enthusiasts will find maps, conditions, and other detailed information at [www.dcnr.state.pa.us](http://www.dcnr.state.pa.us) (select 'Recreation', then 'Things to Do').

All snowmobiles and ATVs in Pennsylvania must be registered with DCNR's snowmobile/ATV Unit. For more information on registration, call toll free (866) 545-2476 or visit DCNR's website.

## READER ADS

For sale 2000 Arctic Cat Touring, 580cc, EFI, water cooled with reverse, runs strong, great condition, new battery, plugs and rails, only 1,400 miles. Asking \$1,600.00, phone 724-838-1402.

Vintage Sleds & Parts - Worthington Trailer - \$2200.00 - NOS- Harley - Scorpion - Ski Doo - Amf PARTS - [rsg247@hotmail.com](mailto:rsg247@hotmail.com), 717-609-5580

### Your ad can be seen here too!

Rates are 50 cents per word with a \$10 minimum.

Send ad copy with payment by the 10th of the month to:

Hartman Publishing Company  
2286 Black Rock Road • Hanover PA 17331  
or call or fax 717-633-5051 e-mail—[keystonesnowmobiler@comcast.net](mailto:keystonesnowmobiler@comcast.net)



### Northern Door Inn

is totally geared to snowmobiling.  
Fort Kent and the surrounding towns  
have millions of dollars  
invested in grooming equipment.  
Good equipment and expert operators  
ensure smooth riding on  
our hundreds of miles of wilderness trails

- \* Huge parking lot... plenty of room to maneuver
- \* Nine restaurants within a five minute walk
- \* Access all trails from our parking lot
- \* Three minute walk to Yamaha and Ski-Doo dealers
- \* Free continental breakfast and wireless internet access
- \* Gas available at the foot of our parking lot
- \* One minute walk to 24 hour Maine registration service

356 West Main St  
Fort Kent, Maine 04743  
Toll free 1-866-834-3133

[www.northerndoorinn.com](http://www.northerndoorinn.com)

## CALENDAR OF PSSA & CLUB EVENTS:

- \* January 10–Deadline for the Keystone Snowmobiler February issue
- \* January 20-28–International Snowmobile Safety Week
- \* February 10–Deadline for the Keystone Snowmobiler March issue
- \* May 5–PSSA Annual Meeting, State College, PA

## Keener's Snow Country Store

SNOW COUNTRY

Located One Mile North of  
Cherry Springs State Park on Route 44.

Gas, Snowmobile Accessories, Snacks,  
T-shirts & Sweatshirts

Hours: Mon-Thur 8am-8pm, Fri 8am-10pm  
Sat 8am-9pm, Sun 8am-5pm  
Phone: 814-435-2176



## 19TH GREEN MOTEL

PO Box 37, Route 28  
Old Forge, NY 13420  
315-369-3575  
[www.19thgreenmotel.com](http://www.19thgreenmotel.com)

- All Queen Size Beds
- Color Cable TV
- Individual Controlled Heat
- All Non-Smoking
- Refrigerators & Microwaves
- Ride from Your Door
- Plenty of Parking
- Free Wireless Internet

"Reduced Mid-Week Rates"

# CONQUER SNOW

## SALES EVENT



2018 SIDEWINDER L-TX DX



2018 SRVIPER R-TX



2018 SNOSCOOT

UP TO  
**\$3,000**  
/// CUSTOMER CASH\*  
ON SELECT NON-CURRENT MODELS

AS LOW AS  
**0% APR UNTIL  
PAID IN FULL<sup>1</sup>**

**EBENSBURG  
YAMAHA, INC.**  
183 ZEMAN DR  
EBENSBURG, PA  
EBENSBURGYAMAHA.COM

**F & S YAMAHA  
& MARINE, INC.**  
1800 SMITH STATION RD  
SPRING GROVE, PA  
FSYAMAHA.COM

**FIVE STAR  
POWER SPORTS**  
499 ROUTE 764  
DUNCANVILLE, PA  
FIVESTARDUNCANVILLE.COM

**OFF ROAD EXPRESS**  
10320 WATTSBURG RD  
ERIE, PA  
OFFROADERIE.COM

**WARHORSE YAMAHA**  
1000 DUNHAM DR  
DUNMORE, PA  
NAWARHORSE.COM

Visit your nearest Yamaha dealer today. For more Yamaha dealers, visit [yamaha-snowmobiles.com](http://yamaha-snowmobiles.com)

\*Customer Cash offer good on select models between 1/1/18 to 3/31/18. Dealer remains responsible for complying with all local and state advertising regulations and laws. <sup>1</sup>Offer available on approved purchases of new 2014-2017 Apex, Viper & Sidewinder models made on the Yamaha Credit Card issued by WebBank, member FDIC. Subject to credit approval as determined by WebBank. Offer valid through 3/31/18. Available to existing cardholders of the WebBank Yamaha Card. Account must be open and current to be eligible for this offer. 0%, 4.99%, 8.99%, or 12.99% APR with Minimum Payments of 1.67%, 1.89%, 2.08%, or 2.28% respectively of the purchase price balance, based on your creditworthiness, are effective until the purchase is paid in full. Minimum Interest Charge \$2 per month. Standard APR 15.99%-23.99%. See dealer for details. Product and specifications subject to change without notice. Professional rider on closed course under controlled conditions. Always wear an approved helmet, eye protection and protective clothing. Ride responsibly and always ride within your capabilities, allowing time and distance for maneuvering, and respect others around you. Know the conditions. Observe all state and local laws. Don't drink and ride. ©2018 Yamaha Motor Corporation, U.S.A. All rights reserved.



## PUBLIC OR PRIVATE? WHERE YOU CAN & CAN'T RIDE

SnowTech Magazine, September, 2017  
Kevin Beilke, Editor

In the Spring issue of SnowTech Magazine we discussed the growing problem of snowmobilers trespassing on private land. Many, more like the majority, miles of groomed snowmobile trail cross private land. Even in areas with generous amounts of public land, the trails often must cross private lands to interconnect.

With the growing popularity of off trail riding, we find an increasing number of snowmobilers who are not familiar enough with the land or area they are riding in and do not study maps long enough to know where it is legal to ride, and where they need to stay on the trail. When we talk about "off trail riding" we are talking about riding in areas with no groomed trails, we are not referring to tearing across an open field right next to a groomed trail, but that is exactly the behavior that is causing all of the problems.

One almost needs to be a major in psychology to better understand the behavioral issues at hand. Do the riders not understand that the land adjacent to the trail is private, thus their off trail excursions are illegal trespassing?

Or, do the riders know the land is private but do not think it will matter if they put down a few tracks? Or, do the riders know the land is private and simply do not care about land owner rights, and figure they won't get caught?

Anyone involved with trail clubs and associations know first hand how much of a problem this is becoming. They go out to talk with the land owner to secure an easement or permission for the trail to again cross the private land, but are told to move the trail, snowmobilers are no longer welcome. Why? Sometimes it is due to the loud machines, sometimes it is due to a land use conflict, but most often it is due to the inability of the snowmobilers to stay on the trail. Plain and simple. Snowmobilers running over small trees, trampling whatever might be under the snow, spinning their tracks and causing erosion, any and all of it. Even if they cause no damage, it is a matter of permission and respect — respecting private property, not going somewhere if you do not have permission, and understanding what the word "no" means. Pretty simple, yet often misunderstood.

Trail clubs do their best to convince the land owner to "give them one more chance" and put up more signage to keep the riders on the trail. Maybe with extra signs indicating this is a sensitive area that requires riders to stay on the trail maybe they will be better next year? While this seems to be a logical strategy, it often times has the opposite effect. It is like riders see these signs and completely ignore them, going right past them to tear up the fresh snow out in the open field.

So with each year, as we all venture out onto the groomed trail network, we find the trail has been moved, relocated, or worse yet, closed. You often wonder why. What happened

to cause the trail that has been here for 10-20 years to get moved? Instead of taking the scenic route along a fence line and through the woods, you now are forced to ride alongside the roadway in the ditch. Oh boy, that sure is fun. Slowly, year after year, more and more sections of "good" trail are replaced with ditch trail, using the last remaining path we have access to — road right of ways.

One theory is that younger riders, who seem to be the bulk of the problem, do not remember what snowmobiling was like before we had groomed trails. They do not remember hitting rocks, hitting culverts, riding only ditches and lakes and rivers, not having a safe, marked, smooth path designated for snowmobiles. They do not know how much time and effort and money went into creating a trail system in the first place. Because if they did, they might try a bit harder to keep what we have. The entitlement attitude they carry in their daily lives will slowly destroy the privilege that many of us have worked so hard for, for so long — having a safe place to ride our snowmobiles close to home in areas with little public lands.

To that end, each and every rider must ask themselves before they go off the trail — is this land public or private? If you don't know, don't go. Carry a map and learn how to read it. Know where you are. Pay attention to the signs along the trail. Use GPS information that indicates land ownership. Know where the restricted areas are. Know the customs and laws of each area you go to ride. Ignorance is no excuse!

Shared by the American Council of Snowmobile Associations, with permission from SnowTech

# NORTHERN OUTDOORS

MAINE'S PREMIER SNOWMOBILE RESORT

Featured in American Snowmobiler

Home of

**Ride Hard. Rest Easy.**  
A new trail every day!

- Late model 1 & 2 person snowmobile rentals!
- Two Tucker Terra groomers on site. We groom the trails directly from your door.
- Great food and hand-crafted ales at our Kennebec River Brewery.
- Trailside cabins, condos and lodge rooms with cable T.V. Onsite gas and free wifi in the main lodge.

Book Early For Best Rates. Visit online for more information.

**888.770.SLED**

[www.NorthernOutdoors.com](http://www.NorthernOutdoors.com)

# STEINER®

MOW IT • BLOW IT • TRENCH IT • HAUL IT • DRILL IT • TILL IT • DO IT.

See us at the PA Farm Show (Harrisburg) Jan. 6-13

See us at the Keystone Farm Show (York) Jan. 9-11

New Model 450  
25, 32 or 37 hp

**HENRY H. HARTMAN**  
2300 BLACK ROCK ROAD, HANOVER, PA 17331  
PHONE (717) 637-3741  
EMAIL: [HARTMANSTEINER@COMCAST.NET](mailto:HARTMANSTEINER@COMCAST.NET)

## SNOWMOBILE TOURISM...

## ...WORKS FOR AMERICA!



## HYNER MOUNTAIN SMC

Hello from Hyner Mountain Snowmobile Club. Just want to let everyone know what has been happening up on the mountain.

Well the new riding season has begun! Now we WAIT!....for cold weather and snow; and, that is what is happening up on the mountain.

Late in November we held our Annual Youth Snowmobile Safety Class. Unfortunately the attendance was down from previous years. We still had a great class and a great day; both up at the lodge and up in the mountains of North Central Pennsylvania. The class was taught by Henry Hartman (honorary Hyner Mt. Club member), Harrison Langley, and Rich Ebersole (both of whom are Hyner Mt. Club members). I have always said: "snowmobile season can't begin for us at the lodge until Henry shows the video "Unsafe Ace". Thanks Henry!

Our lodge this year completed the newest North Central Pennsylvania Snowmobile Trails Map. We would like to say "thank you" to all the businesses that helped to sponsor this project. Also, lodge members would like to say "thank you" to Cindy Barrick (one of our members) for all the hard work, and all the time that she put into this map project. Thanks Cindy!

Once the snow DOES start falling, don't forget to go to our website: [www.hynermountainsnowmobileclub.com](http://www.hynermountainsnowmobileclub.com) and click on our snocam to see how much snow is on the ground.

Well that's about all for now. Ride safe! Talk to ya next month. THINK SNOW!!

*Dan Casey*



## SNOWMOBILING IS A FUN FAMILY SPORT



Join us today!



A MESSAGE BROUGHT TO YOU BY



ISMA - 1640 Haslett Road, Suite 170 - Haslett, Michigan - 48840 Tel: (517) 339-7708 - Fax: (517) 339-7708 Web Site: [www.snowmobile.org](http://www.snowmobile.org)

**FS & MARINE INC.**  
1800 Smith Station Road  
Spring Grove, PA 17362  
(717) 632-6382  
[www.fsyamaha.com](http://www.fsyamaha.com)

### Used Snowmobiles

2015 Yamaha Viper RTX LE, 4-Stroke EFI, 130HP, track studded, warr. till 11-30-2019, full service, 3,080 mi. ....	\$6,999
2011 Yamaha Apex, 4-Stroke, EFI, 160hp, power steering, track studded, full service, 13,500 mi. ....	\$4,999
2011 Yamaha Apex XTX, 4-Stroke, EFI, 160HP, power steering, track studded, Ulmer clutch kit, HID headlights, Tuner skis, Handle bar riser, full service, 7,073 mi. ....	\$5,999
2011 Yamaha Nytro RTX, 4-Stroke, EFI, 130HP, track studded, clutch kit, cover, hand guards, 1,410 mi. .	\$5,999
2009 Yamaha Nytro XTX, 4-Stroke, EFI, 130HP, track studded, full service, 6,800 mi. ....	\$3,299
2013 Yamaha Venture GT, 2-Person Sled, 4-Stroke, Fuel Injected, 125 HP, PS, Full-Service, 5,803 mi. ....	\$7,495
2010 Yamaha Vector GT, 4-Stroke, Fuel Injected, 125 HP, Track Studded, Full-Service, 5,247 mi. ....	\$4,999



**On Sale! New Yamaha Snowmobiles**

2018 Snoscoot 200cc. White
2018 Sidewinder RTX LE w/5 yr. warr. White/Red
2018 Sidewinder LTX LE w/5 yr. warr. White/Red
2018 Sidewinder LTX LE w/5 yr. warr. Blue
2018 Sidewinder LTX SE w/2 yr. warr. Grey/Hi-vis
2018 SR Viper LTX LE w/5 yr. warr. White/Red
2018 SR Viper LTX DX w/2 yr. warr. Grey/Blue
2018 SR Viper LTX w/2 yr. warr. Black
2018 SR Venture DX w/2 yr. warr. Grey/Blue



**Rance Renegade & Lightning Aluminum Trailers In Stock**

**One of the Largest Selections of Klim, FXR & 509 On The East Coast**



\$994747



## FOREST COUNTY SNOWMOBILE CLUB

Hopefully, by the time you are reading this article, we have had a lot of snow in the Allegheny National Forest. If not, get out there and do the Snow Dance. After a couple of really lean riding years, it would be nice to do the "Loop" or just take a leisurely ride over to Cougar Bob's for some hot soup and a burger.

We all know that in order to have a smooth riding surface, a lot of ground work is necessary. This year's main project was smoothing out and filling water holes on Trail 1 where it runs parallel to Hearts Content Road. 180 ton of stone was laid to fill holes. Unfortunately, it was too late in the season to install the drainage pipe necessary to complete the project, but the riding surface has been vastly improved and that work will be done in the Spring. This work was done by volunteers from the Forest County Snowmobile Club with cooperation of the U.S. Forest Service Bradford District. Funding was provided by Grants from DCNR through the Pennsylvania State Snowmobile Association.

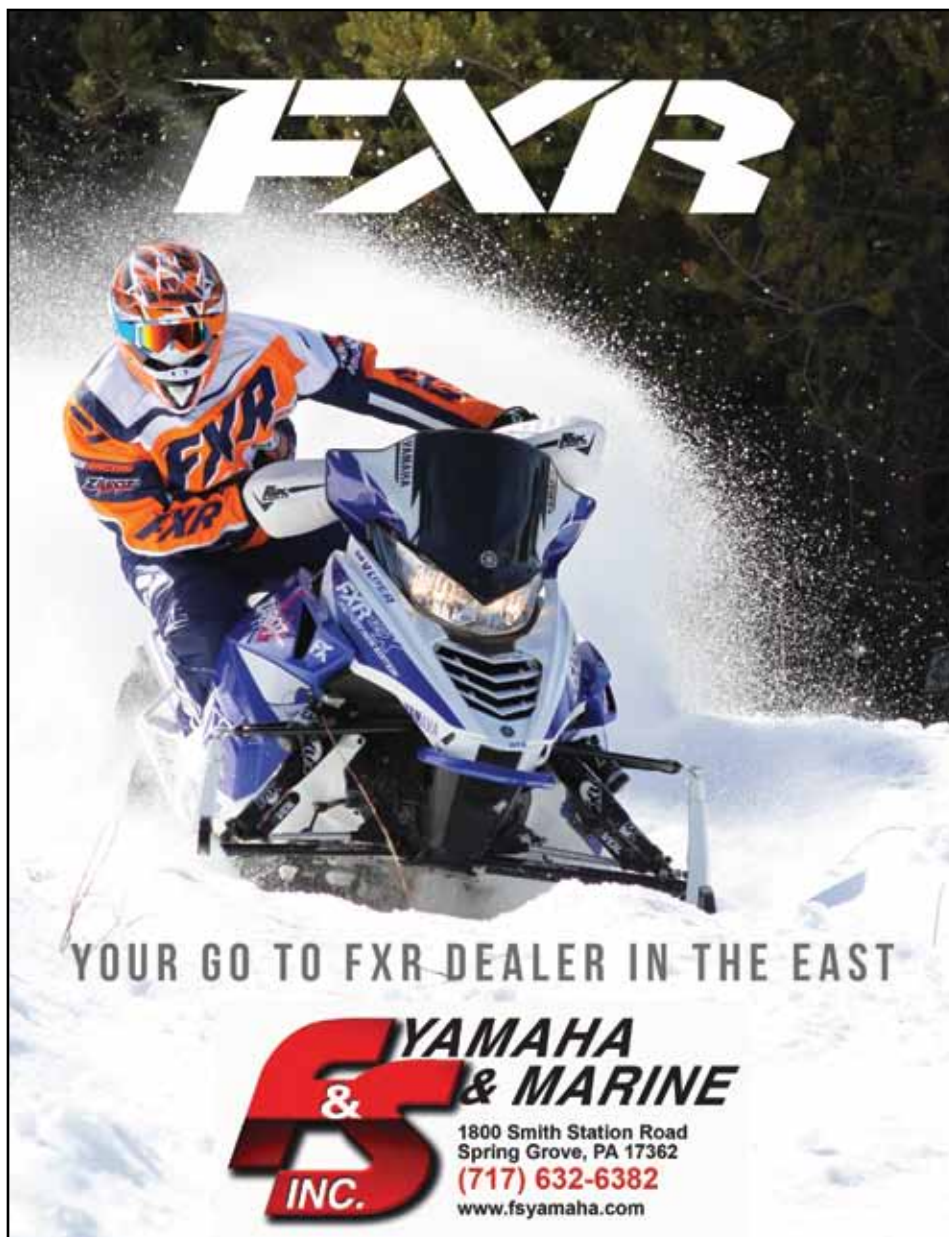
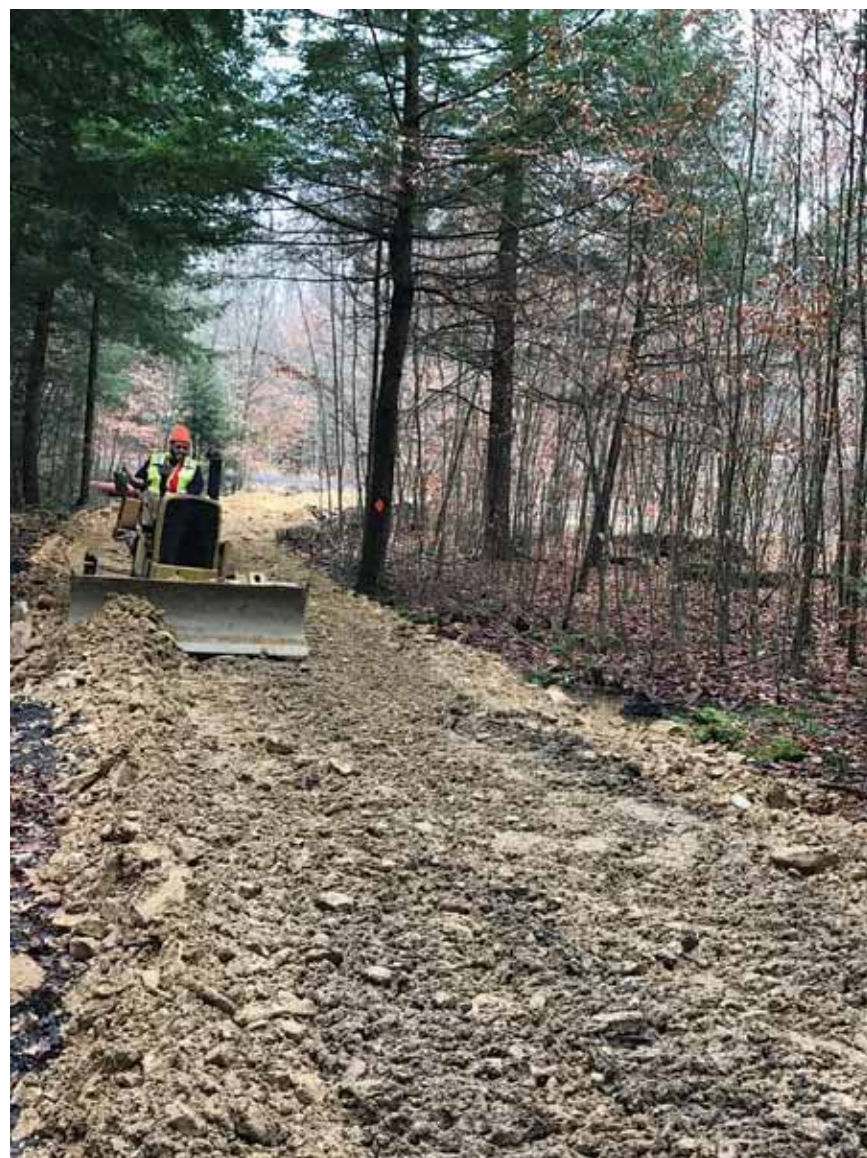
Another area of work was smoothing out with gravel another section of Trail 1 behind Cougar Bob's in Kellettsville. Trail brushing was done on Trail 1 in various places where the underbrush was overgrowing the trail from Kellettsville, around Marienville to Russell City as well as some side trails. This should make

riding safer by being able to see oncoming riders and trail groomers easier. The trail brushing/mowing was done by Marienville Trail Riders Snowmobile Club and Forest County Snowmobile Club. This was funded by a grant that MTRSC received from DCNR and PSSA with cooperation of the U.S. Forest Service Marienville District.

We want to thank the Forest Service personnel for their help and input in these projects. They are always very helpful. As you see by the articles in this paper, all of the Clubs do a tremendous amount of work, all volunteer, to help make your riding enjoyable. Most of this work would not be done without them and the funding from Grants obtained through the PSSA. Please join a club in the area you ride and join PSSA ([pssa.org](http://pssa.org)). The PSSA website has lots of info and links to the clubs across Pennsylvania as well as our site [www.forestcountysnowmobileclub.com](http://www.forestcountysnowmobileclub.com).

Happy and safe riding.

*Larry Martin*, Forest County Snowmobile Club,  
PSSA Region IV Director.



**FXR**

YOUR GO TO FXR DEALER IN THE EAST

**YAMAHA & MARINE INC.**

1800 Smith Station Road  
Spring Grove, PA 17362  
(717) 632-6382  
[www.fsyamaha.com](http://www.fsyamaha.com)

## Christy's Motel

OLD FORGE, NY  
315-369-6138

Heat Individually Controlled  
Efficiency Unit Available  
Color Cable TV  
Ride From Your Door  
Shopping, Restaurants And Gas Close By

Ample Trailer Parking  
Trail Videos on Blog

FREE Wi-Fi

"SNOW CAM"

[www.ChristysMotel.com](http://www.ChristysMotel.com)





# You're On the Trail to Something Big

## Allegheny National Forest Region, Pennsylvania

### "ONE OF THE WORLD'S TOP 10 MOST SCENIC SKYWALKS"

## KINZUA SKY WALK

296 Viaduct Road, Mt. Jewett, PA  
Winter Hours: Visitors Center Mon-Sat 8am-6pm  
Park open 7 days a week from 8am-dusk  
FREE ADMISSION

ABSOLUTELY STUNNING ... WOW!



## FUN THINGS TO SEE AND DO!

**GET OUTSIDE AND PLAY!**

**SNOWMOBILE, ATV AND UTV RENTALS**  
**814-779-3745**



**January 13**  
**Winter in the Wilds**  
CJ Spirits Craft Distillery, 11am-11pm  
120 Willow Run Drive, Kane, PA  
814-837-1500 cjspirits.com

**January 21**  
**Marilla Winter Trek**, Noon-4pm  
Marilla Reservoir, Route 346, Bradford, PA  
tunavalleytrail.com

**January 25**  
**Skatetacular Dreams on Ice**  
7:30pm - 9:30pm  
Bromely Family Theater  
300 Campus Drive  
Bradford, PA  
814-362-2522  
tickets: bcpac.com

**February 2**  
**Terrance Simien & The Zydeco Experience**  
7:30pm - 9:30pm  
Bromeley Family Theater  
300 Campus Drive  
Bradford, PA  
814-362-5113  
tickets.vendini.com



**FREE Visitors Guide & Map**

**800-473-9370**

**VisitANF.com**

## SNOWMOBILE SAFETY CLASSES

**County**  
**Date**  
**Time**

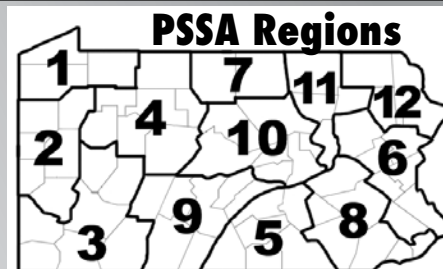
**PSSA Region**  
**Location**  
**Sponsor**

**Contact**

Cambria County  
Jan. 6, 2018  
8:00am-4:30pm

Region 9  
Chickaree Ridge Runners Snowmobile Club  
Chickaree Ridge Runners SMC & Martin Marine Sales, Inc.

Clint Elias (724)-349-5369 or (814)-749-9931,  
clintswitchback8@gmail.com Class Limited to 25 Students



**ATTENTION Clubs, Dealers, Safety Instructors-**

Please schedule your Safety Class dates as soon as possible and send the information to the Keystone Snowmobiler for inclusion in our Master List of Snowmobile Safety Classes.

## Know Before You Go

**Always Check Local Ice Conditions**



International Snowmobile Manufacturers Assn.  
1640 Haslett Road • Suite 170 • Haslett MI 48840  
(517) 339-7788 • www.snowmobile.org



**THIS WINTER, GET SMART!**

**Take a Snowmobile Safety Course.**

**Remember! The best snowmobiling is safe snowmobiling.**

International Snowmobile Manufacturers Assn.  
1640 Haslett Road • Suite 170 • Haslett MI 48840  
(517) 339-7788 • www.snowmobile.org





Jessie Barley, from the Glendale Lake Snowmobile Club, crossing the Dam at Prince Gallitzin State Park for that one last ride of the season last year. You know it's late in the sledding season because the lake is already melted.



**ski-doo®**



**A SLED FOR EVERY RIDER AND EVERY TRAIL**

**SMITH MARINE LLC**  
New Britain, PA  
215-345-1621  
[www.smithmarineusa.com](http://www.smithmarineusa.com)

## GLENDALE LAKE SMC

Greetings from the beautiful Glendale Lake Area and the Glendale Lake SMC. December was a very busy month for the Club. The month kicked off with the installation of our Railroad Crossing on the Trail to Black Moshanon State Park. We've waited over a year for the crossing to be installed and were able to help fund it with a PSSA Mini Grant. Without the grant this crossing would have depleted the club coffers so we're very appreciative of the grant and put it to good use (see the picture of the crossing below). Trail work was also done between the two State Parks including cleanup of the historic Stage Coach Trail. Next up was the Club Christmas Get Together and Annual Meeting. We had a great turn out for this event, close to 40 members turned out for Pizza and Wings provided by the Club, and to elect the Club Officers and Board Members. We have new people stepping up to some key positions in the club, which is very exciting to see. Much time was spent discussing the expansion of our trail system and plans for future riding areas. We were also very fortunate to have donated by a local contractor, a 40-foot by 8-foot wide bridge for use on our trail expansion.

Club Swag was promoted as Christmas Gifts and order forms were passed around. The new Club FaceBook Group was briefly discussed and Club Members are encouraged to join the club GROUP for the latest information on Club events, riding opportunities, and last minute trail conditions and ride announcements. Our FaceBook 'Group' is new and different from our regular Facebook page and you must join the group for all this information.

The week following our meeting we had a Trail Clean Up and Bridge Removal Work Party at Prince Gallitzin State Park. We had rerouted and replaced a bridge earlier in the season and the old bridge needed to come out. Trails on the

north side of the lake also needed prepared for the winter season (see picture with Park Staff). The week after that brought another Work Party at the Railroad Crossing to complete the approaches to the Crossing. As always, we urge you to use caution at any RR Crossing and to be very respectful to landowners in this area.

Just a reminder that our trail to Black Moshanon State Park is on a lot of State Game Lands so that trail doesn't open until January 21st, please show respect in that regard. Trails at Prince Gallitzin State Park open on December 10th, weather permitting. The Park has only about 20 miles of trails but it's very picturesque and it's a great place for a family or afternoon ride. The trails cross the breast of the dam and wind thru beautiful wooded areas that bring you to several scenic lake view spots. It's not high mileage or fast riding, but it's very satisfying and reminiscent of simpler times. And for the family there is a heated, open year round, restroom at the Beaver Valley Marina and Snowmobile Parking Area. The Parking Area does have room for larger trailers, space permitting.

Our Club is located in south central PA, about 1.5 hours east of the Laurel Highlands and about 45 minutes west of Black Moshanon State Park. We're not far from Ebensburg and Altoona. If you're from this area or ride in this area, we urge you to join our club. We meet the first Monday of the month, year round at 7:30 PM at the Patton Sportsman's Club. Except in January 2018 since the first Monday hits on New Year's, we're pushing our meeting back a day to Tuesday January 2nd, still at 7:30. Come join us. If you're not, we still urge you to join a club in your area, or where you ride. And join the PSSA so that by all working together we can improve snowmobiling for all of us.

Hopefully by the time you're reading this we'll all have put some miles and smiles on our sleds.

*Randy Green*





# SNOWMOBILING OPPORTUNITIES ON DCNR, STATE FOREST LANDS

## 2017-18 WINTER RIDING SEASON

Opportunities to ride snowmobiles on DCNR State Forest and State Park lands total 3108 miles of open roads and trails statewide for this winter. This is a 196 mile increase from the total mileage available for the 2016-2017 riding season. Joint-use roads make up 1864 miles while trails and gated roads make up 1,244 miles of those total miles. There are 136.7 miles of joint-use road and 6.9 miles of trail that will be closed this season related to oil and gas extraction activities. These roads have been temporarily removed from the system to eliminate the safety issue and incompatibility of having gas development traffic on a road with snowmobilers. Additional snowmobile trails have been created and added to the trail system to make up for the impacted roads and trails. Timber sales, road/bridge maintenance re-routes and miscellaneous other activities account for an additional 14.5 miles of road closure and 5 miles of trail closure. This year an additional 288.6 miles of roads and trails will be plowed for vehicle access. Gas activities account for 106.5 miles and other activities account for 182.1 miles of this total.

Details regarding snowmobiling opportunities are discussed below for each forest district. For up to date snowmobile information, maps and trail conditions please visit: <http://www.dcnr.state.pa.us/forestry/recreation/snowmobile/index.htm>

### **D-01, Michaux State Forest**

This year no roads or trails are anticipated to be closed on the Michaux State Forest.

There are 5 roads anticipated to be plowed this season for Timber sales and other access (Dead Woman's Hollow, Milesburn, Rattlesnake Run, Ridge(Still house Hollow to SF boundary), and Stillhouse Hollow) for a total of 14.0 miles.

The Michaux State Forest currently has 79.5 miles of joint-use roads and 54.7 miles of snowmobile trails for a total of 134.2 miles open for riding.

### **D-02, Buchanan State Forest**

This year no roads or trails are anticipated to be closed on the Buchanan State Forest.

There is 1 road anticipated to be plowed for timber sale access this season Summit(Mountain House Rd to Ross Rd) for a total of 2.0 miles.

The Buchanan State Forest currently has 55.9 miles of joint-use roads and 37.1 miles of snowmobile trails for a total of 93.0 miles open for riding.

### **D-03, Tuscarora State Forest**

This year no roads or trails are anticipated to be closed or plowed on the Tuscarora State Forest.

The Tuscarora State Forest currently has 88.3 miles of joint-use roads and 46.7 miles of snowmobile trails for a total of 134.9 miles open for riding.

### **D-04, Forbes State Forest**

This year no roads or trails are anticipated to be closed or plowed on the Forbes State Forest. No Roads are anticipated to be plowed this year.

The Forbes State Forest currently has 37.5 miles of joint-use roads and 40.0 miles of snowmobile trails for a total of 77.5 miles open for riding.

### **D-05, Rothrock State Forest**

This year no roads or trails are anticipated to be closed on the Rothrock State Forest.

There are 11 roads and trails anticipated to be plowed for timber sales and other access (Bear Meadows (Beidelheimer to Stone Creek & SF boundary to Laurel Run), Beidelheimer (Bear Meadows to Gettis Ridge), Coopers Gap (Stone Creek to Huntingdon County line), Greenwood Runaround Trail, Laurel Run (Little Flat to Bear Meadows), Leading Ridge, Little Flat, Little Shingletown(Pine Swamp heading northeast for 0.7 miles), Pine Swamp (SF boundary to Little Shingletown), Stone Creek (Coopers Gap to Bear Meadows), and Teaberry) for a total of 22.8 miles.

The Rothrock State Forest currently has 167.1 miles of joint-use roads and 26.5 miles of snowmobile trails for a total of 193.6 miles open for riding.

### **D-06, Gallitzin State Forest**

This year no roads or trails are anticipated to be closed on the Gallitzin State Forest.

There are 2 roads anticipated to be plowed for gas activity (Gas Company Road, Wellhead Access) for a total of 1.3 miles.

The Gallitzin State Forest currently has 16.3 miles of joint-use roads and 22.6 miles of snowmobile trails for a total of 38.9 miles open for riding.

### **D-07, Bald Eagle State Forest**

This year no roads or trails are anticipated to be closed on the Bald Eagle State Forest.

There are no roads anticipated to be plowed for timbersale or other access purposes this season.

The Bald Eagle State Forest currently has 245.8 miles of joint-use roads and 89.7 miles of snowmobile trails for a total of 335.5 miles open for riding.

### **D-08, Clear Creek State Forest**

This year no roads or trails are anticipated to be closed or plowed on the Clear Creek State Forest.

The Clear Creek State Forest currently has 12.4 miles of joint-use roads open for riding.

### **D-09, Moshannon State Forest**

This year there will be 6 joint-use roads and 1 trail that is closed due to gas operations for approximately 17.2 miles. The following joint-use roads are closed this season due to gas activities: Ames Road (2.5 miles), Four Mile Road (4.0 miles), McGeorge Road (Powerline to Tyler, 5.1 miles), Tyler Road (McGeorge to compressor, 2.3 miles), Gordon Road (north of Anderson Creek 0.4 miles), and Weiss Grade Road (1.0 miles). 1.7 miles of trail are closed for this season for a and replaced with a reroute (Big Ridge Trail).

The district continues to work with Hilltop Howlers Snowmobile Club to find and lay out new trails as alternatives to joint-use roads impacted by gas operations. The riding experience should be greatly increased with the construction of new trail sections compared to a typical joint use road experience.

There is an estimated 13 roads that may be plowed for timber sales or other activities (Beaver Meadow (intersection Smays Run Trail headed west for 0.9 miles) Trail, Benner Run (SR540 to Rattlesnake Trail), Crystal Springs (Four Mile to SF boundary), Grant Trail (Quehanna Highway to PGC boundary), Hannah Furnace (SR 504 westward for 1.5 miles), Huckleberry, Medix Grade, Mines (Wilson Switch to Jack Dents), Moose Grade (Mud Run to Snow Trail), Snow Trail, Strawband Beaver, Sullivan (Jack Dents to Grant Road Connector Trail), and Tram (SR 504 headed northwest for 2.4 miles) for 22.7 total miles.

Moshannon State Forest currently has 162.5 miles of joint-use roads and 52.9 miles of snowmobile trails for a total of 215.4 miles open for riding this year

### **D-10, Sproul State Forest**

This year there are 22 joint-use roads that are closed for gas activities this season totaling 61.3 miles. The following roads are closed this season due to gas activities; Beech Creek (Eagleton to SR144, 5.6 miles), Benson (SR144 to Dry Run, 0.6), Carrier (Private Drive to Robbins, 3.1) Coon Run Road (4.3 miles), Dry Run (North block, 3.6

*continued on page 13*

## KENNEDY RV & POWERSPORTS, INC.



- Snowmobiles
- ATV's
- Scooters
- RV's
- Trailers



## Sales & Service

## KENNEDY RV & POWERSPORTS, INC.

1394 Old York Road • Dillsburg PA 17019 • 717-432-9741 • 800-443-0062  
[www.kennedyrvandpowersports.com](http://www.kennedyrvandpowersports.com)





Laurel Highlands Snowmobiler of the Year, Allan Knupp, center, with his wife, Sheila and Club President, Brad Hoover.

## LAUREL HIGHLANDS SMC

Hello from the Laurel Highlands, I just came in from hunting deer to write this article. Guess what???? It snowed. That is what snowmobiling is all about. The White Stuff -- SNOW. I did not get a deer, however, I got inspired to ride sleds. Now that regular season buck hunting has come to an end, snowmobile season has officially started. The weather seems to be doing its usual up and down with the temperatures, but with any luck we will all be out there riding before you have received this issue of the Keystone Snowmobiler.

Our December events have yet to happen when I wrote this article. This is what is scheduled to have happened. DCNR will be present at our December 14 meeting. The public meeting is held annually in the clubhouse to provide us information about the wide wonderful world of snowmobiling. There are usually 5-6 personnel from Laurel Hill State Park Complex, and Forbes State Forest combined at the meeting. As with all our meetings, we will have pizza delivered, open up the pop machine, and have brownies to eat. More about this important DCNR meeting will appear in the next issue of the Keystone Snowmobiler. The club's Christmas party will be held on December 16th. Brad and Sherri Hoover are the hosts of the event, and have planned the night's activities. It is a covered dish dinner. Everyone always has a nice time.

At our annual snowmobile banquet held at Bell's Banquet Hall, our club awarded the Snowmobiler of the Year to a well-deserving, Allan Knupp. Allan is extremely active in the club with the drag races, work-days, and coming to meetings. He spends more time than most preparing the drag race strip, and still has the energy to attend and work the regular workdays. He often stops by the club to mow, and take care of chores while checking on the track conditions. If it were not for Mr. & Mrs. Allan Knupp, there would not have been drag races at our club this year. Therefore, on behalf of the Laurel Highlands Snowmobile Club -- THANK YOU!

The January meeting is Thursday, Jan. 11th at 8:00 PM in the clubhouse. With any luck, we can get a quick ride in before the meeting. If you can, stop in to see what has been happening around the club. It's a great way to start the New Year! We will also discuss the plans for the Poker Run/Radar Run scheduled for January 20th. The event starts at 11:00 AM in the clubhouse. Our poker runs are flexible as far as the time it takes to run the route, and which parts of the route you complete as the playing cards are dealt in the clubhouse. We will provide you with a map to numbered boxes with index cards inside. Collect as many of the different numbers as you can, and return to the clubhouse to be dealt your hand. Extra cards are available for an additional donation. Our card boxes are strategically placed along a route leading to Maple Summit's famous trail-side cookout. This is a great place to stop, visit, make a donation, and eat lunch. We will be eager to see who wins the prize when the final results are completed at the end of the run. This is usually around 3:00. The radar run takes place on our drag strip. For a donation, you'll be timed for speed running up the track. It's a fun way to see how fast your sled is moving.

In closing, I would like to thank all who are involved in volunteer organizations. It might be the fire department, churches, school boards, or snowmobile clubs. We are blessed in our area to be surrounded by hard working volunteers in our club as well as the Maple Summit and Rolling Ridge Snowmobile Clubs. The next time you ride a snowmobile in the Laurel Highlands area thank a working member of one of these clubs. These volunteers keep things going for all of us through their selfless devotion to making our mountain great! It is with pride and respect that I can say thank you to these people I refer to.

Until next time, enjoy life to its fullest and get involved in your local club.

*Jim Wilkinson & Shelly Buckles*

Below: Allan running the roller.



**the family that RIPS together STAYS together**

**ARCTIC CAT**

**INTRODUCING THE ALL-NEW ZR® 200.** The ultimate snowmobile for snow-hungry youth has arrived. Trail certified and perfect for kids who have outgrown their ZR 120, it's the first sled of its kind. And it's snappy, up to 30 mph to keep up with the rest of the clan. It's time for a family snow trip, into *THE WIDE WORLD OF ARCTIC CAT*.

Visit us today to see our entire lineup of 2018 snowmobiles.

**M & S Sales & Service Inc**  
 3385 Division Hwy  
 New Holland, PA 17557 717-354-4726  
[www.MandS.org](http://www.MandS.org)

**SAFE RIDERS!**  
You Make Snowmobiling Safe

Always wear a helmet and don't drink and ride.  
 ©2017 Textron Specialized Vehicles Inc. All rights reserved.



*continued from page 11*

— replaced by Dry Run Trail), Dry Run (7.5 miles), Eagleton Road (PPL powerline to Beech Creek 8.0 miles), Grugan Hollow (Pete's Run to Kettle, 2.4 miles), Kato/Orviston Road (3.8 miles), Panther Road (1.6 miles), Pat's Ridge Road (1.3 mile), Penrose Road (SR144 to Coon Run, 1.8 miles), Pete's Run Road (Sr144 to Grugan Hollow, 3.3 miles), Ritchie Road (Hyner Mountain to Old View, 2.2 miles), Shoemaker Ridge Road (4.8 miles) State Line road (2.3 miles) and Young Woman's Creek Road (Fork Hill to Benson, .6 miles). Additionally, 2 roads are closed due to Mining activities (Cole Run, 6.2 and Cooks Run(SR120 to Onion Run, 5.4)) for a total mining impact of 11.6 miles This works out to approximately 72.9 miles removed from the system for this year.

There are 16 joint use roads and trails that may also be plowed for oil and gas activities for a total of 65.5 miles. These roads include Allen Dam(2.7 miles), Clubhouse (2.8 miles), Dehaas (9.2 miles), Eagleton Road (2.2 miles), Fisher Fire (4.9 miles), Grugan Hollow (Kettle to SR 120, 8.3 miles), Hensel Fork (3.2 miles), Jews Run (4.1 miles), Kettle Creek Vista (0.5 miles), NY Central RR Access (0.1 miles), Panther (3.8 miles), Ritchie ( , 0.8 miles), State Line ( , 0.5 miles), Sugar Camp (4.4 miles), Trout Run (6.1 miles), and Yost Ridge Road (5.1 miles).

There are an estimated 10 roads that may be plowed for timber sales or other activities (Beech Creek, Big Basin, Carrier (Private Drive to Oak Ridge), Crowley, Eddy Ridge, Hicks, Lebo, Quarter Mile (SR44 to Woods Rd 415), Ritchie (Private Drive to Old View), and Shintown Run) for 36.4 total miles.

The Sproul State Forest currently has 291.3 miles of joint-use roads and 182.2 miles of snowmobile trails for a total of 473.5 miles open for riding.

#### **D-11, Pinchot State Forest**

*\*(Formerly the Lackawanna State Forest)*

This year no roads or trails are anticipated to be closed or plowed on the Pinchot State Forest.

The Pinchot State Forest currently has 14.7 miles of joint-use roads and 23.7 miles of snowmobile trails for a total of 38.5 miles open for riding.

#### **D-12, Tiadaghton State Forest**

The following roads and trails are temporarily closed for gas activities this season; Barrens (2.4 miles), Big Springs (5.9 miles), Boone (2.0 miles), Bull Run Dead End 1 (2.0 miles), Bull Run Dead End 2 (0.9 miles), Bull Run Dead End 3(0.6 miles), Bull Run (4.9 miles), Francis Camp (SR44 to Highwood Trail, 0.4 miles), Gas Well Road (0.1 miles), Hacketts (2.0 miles), Huntley (2.2 miles), Lebo (SR44 to Dry Run Trail, 3.2 miles), Limbaugh Road (8.2 miles), Lower Pine Bottom (3.4 miles), McKees Run (2.6 miles), Okome (3.0 miles), Parker Road (1.0 miles), Ramsey (3.5 miles), Schoolhouse Hollow (5.3 miles), Silver

Springs (3.7 miles), and Tiadaghton Trail (0.02 miles) for a total closure of 57.4 miles.

There are no roads or trails scheduled to be plowed for timber sales or other activities.

The Tiadaghton State Forest currently has 98.9 miles of joint-use roads and 65.5 miles of snowmobile trails for a total of 164.4 miles open for riding.

#### **D-13, Elk State Forest**

This year there are 2 Joint Use roads (Naval Hollow Road(Naval Briggs Connector Trail to Pad H Valve Access Rd. and Wildwood Tower Road(Straight Creek to Naval Hollow)) that will be closed due to gas activity in this district totaling 3.7 miles. Four gated roads (Boundary Line(Doe Run to Butcher), Deer Pen (Hooters Rd. to Naval Hollow), Doe Run (Boundary Line Rd. to McElk) and North Fork) will also be closed for an additional 4.0 miles.

This year Elk State Forest will have 3 roads that may be plowed due to oil or gas operations totaling 0.4 miles. These are Naval Hollow Road from Pad H Valve Access Road to Wildwood Tower (0.1 miles), Straight Creek Rd from Wildwood Tower Rd to Shawmut Grade (0.2 miles), and Wildwood Tower Road Shawmut Grade to Naval Hollow (0.1 miles).

There is an estimated 8 roads and trails that may be plowed for timber sales or other activities (Brooks Run, Crooked Run, Hunts Run, Pepper Hill Trail, Ridge(Ives Farm to Stillhouse & Hunts Run to Cowley Hill), Stillhouse, and Whitehead) for a total of 31.3 miles.

The Elk State Forest currently has 66.6 miles of joint-use roads and 40.4 miles of snowmobile trails for a total of 107.0 miles open for riding.

#### **D-15, Susquehannock State Forest**

There is 1 joint-use road, which is Twelve Mile Road (SR44 to Big Springs, 4.0 miles) is closed this season due to oil and gas. Rock Run Road (Losey Trail to ATV Trail, 2.9 miles) is another joint use road that is closed due to timber activities. This amounts to a total of 6.9 miles closed.

The district continues to be committed to moving trails from joint-use roads and onto pipeline right-of-ways that are adjacent to a road.

There are 5 joint-use roads that may be plowed this season for oil and gas activities for a total of 22.8 miles. Card Creek (3.0 miles), Elk Lick Run (1.3 miles), Horton Run (3.0 miles), McConnell (13.8 miles) and Pine Island (1.7 miles) roads may be plowed for gas related activities.

There are an estimated 14 roads that may be plowed for timber sales or other activities (Big Springs, Dyer, Elevenmile, Gas Well, Hungry Hollow, Junction, Nelson Run, Portage, Robinson(SR44 to Dyer), Rock Ridge, Rock Run, Sunken Branch(West Branch Rd northwest for 3.4

miles), Thompson Hollow, and Windfall) for a total of 52.2 miles.

The Susquehannock State Forest currently has 138.8 miles of joint-use roads and 95.8 miles of snowmobile trails for a total of 234.6 miles open for riding.

#### **D-16, Tioga State Forest**

This year there is 1 trail (Fall Brook, 0.1 miles) closed due to other activities.

There are no roads that need to be plowed to access natural gas operations.

The district continues to work with the gas companies to move trails off the road where possible and onto the pipeline right-of-way or trail. Reductions seen in the total trail miles are reflected due to a previous data error.

The Tioga State Forest currently has 158.8 miles of joint-use roads and 37.4 miles of snowmobile trails for a total of 196.2 miles open for riding.

#### **D-18, Weiser State Forest**

This year no roads or trails are anticipated to be closed or plowed on the Weiser State Forest.

The Weiser State Forest currently has 23.0 miles of joint-use roads and 20.6 miles of snowmobile trails for a total of 43.6 miles open for riding.

#### **D-19, Delaware State Forest**

This year 3 roads and trails (Log Trail, Mill Brook 1, and Mill Brook 2) are anticipated to be closed on the Delaware State Forest due to a timber sale for a total of 3.9 miles.

The Delaware State Forest currently has 29.5 miles of joint-use roads and 111.3 miles of snowmobile trails for a total of 140.8 miles open for riding.

#### **D-20, Loyalsock State Forest**

Currently, there are 7 joint-use roads that will be plowed to allow access for oil and gas activities totaling 16.4 miles. These roads include Bodine Mountain, Brown, Dry Run (SR87 to Well pad), Firetower (SF boundary to Little Bear Creek), Gray's Run, Hagerman Run (Dry Run Twp. Rd. to SF Boundary), and Little Bear Creek (Firetower to Sand Spring).

An additional 0.8 miles of Little Bear Creek Road may be plowed for other activities. This results in an overall total of 17.2 miles of roads and trails that may be plowed.


The Loyalsock State Forest currently has 112.8 miles of joint-use roads and 23.8 miles of snowmobile trails for a total of 136.6 miles open for riding.

*Jason M. Hall* | Chief, Recreation Section DCNR

OUR NEXT MXZ. YOUR NEXT CORNER.


# WHAT MATTERS IS WHAT'S NEXT.

The 2018 Ski-Doo® MXZ® Blizzard™. Now with the narrow REV® Gen4 platform for easy and precise cornering. The ultra-responsive Rotax® 850 E-TEC®, the industry's most powerful 2-stroke engine. That's what's next in trail riding. What's next for you? [Learn more at ski-doo.com](http://Learn more at ski-doo.com)



**KURTZ MOTORSPORTS INC**  
**3720 Springtown Road • Watsonstown PA 17777**  
**570-538-2160 • [www.KurtzMotorsports.com](http://www.KurtzMotorsports.com)**  
**Hours: M-F 9am-7pm • Sat 9am-3pm**

©2017 Sundstrand Recreational Products Inc. (SRP). All rights reserved. "S" and the SRP logo are trademarks of SRP or its affiliates. Products in the United States (US) are distributed by BRP US Inc. Cleared HP measured on internal dynamometer test in optimal conditions for 2-stroke engines. Always take safety and responsibility.

**ski-doo** 



PSSA MEMBER CLUBS		(REGION)
UNDERLINE INDICATES 100% PSSA CLUB		
ACE SNOWMOBILE CLUB (R 12)		
WAYNE COUNTY	792 TORREY RD	
	HONESDALE, PA 18431	
	570/729-7865	
ALLEGHENY RIDGE RUNNERS SNOWMOBILE CLUB (R 2)		
ALLEGHENY COUNTY	1005 LAWTON STREET	
	TARENTUM, PA 15084	
	724/448-7399	
APPALACHIAN SNOWMOBILE CLUB (R 8)		
BERKS COUNTY	7171 ROUTE 183	
	BETHEL, PA 19507	
	717/933-1039	
ARMENIA SNOWMOBILE CLUB (R 11)		
BRADFORD COUNTY	PO BOX 6	
	SYLVANIA PA 16945	
	570/297-2598	
BALD EAGLE SNOW RIDERS (R 10)		
UNION COUNTY	PO BOX 161	
	LAURELTON PA 17835	
	570/768-8734	
<u>BLUE MOUNTAIN SNOWMOBILE CLUB</u> (R 8)		
LEBANON COUNTY	PO BOX 144	
	ANNVILLE PA 17003	
	717/273-1282	
CENTRAL PENNSYLVANIA SLEDS & TREADS (R 10)		
LYCOMING COUNTY	PO BOX 223	
	HUGHESVILLE PA 17737	
	570/916-2984	
	www.sledsandtreads.com	
CHICKAREE RIDGE RUNNERS SMC (R 9)		
CAMBRIA COUNTY	763 PIKE ROAD	
	JOHNSTOWN PA 15909	
	814/749-9931	
CHOCONUT VALLEY RIDERS CLUB (R 12)		
SUSQUEHANNA COUNTY	PO BOX 152	
	BRACKNEY PA 18812	
	570/663-2041	
<u>DUTCH TRAIL CUTTERS SNOWMOBILE CLUB</u> (R 8)		
LANCASTER COUNTY	10 N HERSHEY AVE	
	LEOLA PA 17540	
	717/940-7887	
FLYING TIGERS SNOWMOBILE CLUB		
	7617 ARLINGTON NW	
	MASSILLON OH 44646	
	330/854-5647	
FOREST COUNTY SMC (R 4)		
FOREST COUNTY	PO BOX 91	
	TIONESTA PA 16353	
	440/867-8682	
	www.forestcountysnowmobileclub.com	
GLENDALAKE SMC (R 9)		
CAMBRIA COUNTY	PO BOX 174	
	PATTON PA 16668	
	814/329-1113	
GOD'S COUNTRY BLACK FOREST SMC (R 7)		
POTTER COUNTY	P.O. BOX 204	
	GALETON PA 16922	
	814/435-2435	
HILLTOP HOWLERS SMC (R 4)		
CLEARFIELD COUNTY	6453 ROCKTON MOUNTAIN HWY	
	ROCKTON PA 15856	
	814/371-8686	
HYNER MT. SNOWMOBILE CLUB INC (R 10)		
CLINTON COUNTY	PO BOX 83	
	JERSEY SHORE, PA 17740-0083	
	570/769-7648	
	https://hynermountainsnowmobileclub.com/	
SNOWCAM: https://sites.google.com/site/hynermountainsnowcam/		
KANE AREA SNOWMOBILE CLUB (R 4)		
MCKEAN COUNTY	PO BOX 511	
	KANE PA 16735	
	814/837-7808	
LAUREL HIGHLANDS SNOWMOBILE CLUB (R 3)		
WESTMORELAND COUNTY	P. O. BOX 91	
	JONES MILLS PA 15646	
	724/593-7008	
	www.lhsc.net	
LEHIGH VALLEY SNOWMOBILE ASSOC. (R 6)		
LEHIGH COUNTY	10107 TORI LANE	
	BREINIGSVILLE PA 18031	
	610/398-8210	
MAPLE SUMMIT SNOWMOBILERS, INC. (R 3)		
SOMERSET COUNTY	2533 HARRISON CITY ROAD	
	EXPORT PA 15632	
	412/480-7068	
	http://maplesummitsnowmobileclub.com	
MARIENVILLE TRAIL RIDERS SNOWMOBILE CLUB (R 4)		
FOREST COUNTY	P.O. BOX 151	
	MARIENVILLE PA 16239	
	814/927-8477	
	marienvilletrailriders.com	
MCKEAN SNOWRIDERS (R 1)		
ERIE COUNTY	PO BOX 27	
	MCKEAN PA 16426	
	814/476-7984	
N.E. PA SNO-TRAILS, INC. (R 12)		
WAYNE & SUSQUEHANNA COUNTY	PO BOX 113	
	FOREST CITY PA 18421	
	570/679-7669	
PA GRAND CANYON SNOWMOBILE CLUB (R 7)		
TIOGA COUNTY	4814 ROUTE 6	
	WELLSBORO PA 16901	
	570/724-2888	
	www.pagrandcanyonsnowmobileclub.com	
<u>PA SNOWSEEKERS SMC (R 2)</u>		
BUTLER COUNTY	PO BOX 542	
	ZELIENOPLE PA 16063	
	724/452-0836	
<u>PIGEON HILLS SNOWMOBILE CLUB (R 5)</u>		
YORK COUNTY	PO BOX 3	
	HANOVER PA 17331	
	301/987-8922	
	www.pigeonhillssmc.org	
PIKE COUNTY SNO RUNNERS (R 12)		
PIKE COUNTY	PO BOX 550	
	GREENTOWN PA 18426	
	570/226-4188	
POCONO RIDGE RUNNERS SMC (R 6)		
CARBON COUNTY	585 HONEYSUCKLE LANE	
	LEIGHTON PA 18235	
	570/386-2580	
POE VALLEY SNOWMOBILE CLUB (R 9)		
MIFFLIN COUNTY	85 NOERR LANE	
	LEWISTOWN PA 17044	
	717/994-0005	
POTTER COUNTY SNOWMOBILE ASSOCIATION (R 7)		
POTTER COUNTY	PO BOX 82	
	COUDERSPORT PA 16915	
	570/971-3775	
PRESQUE ISLE SNOWMOBILE CLUB (R 1)		
ERIE COUNTY	12130 FRY ROAD	
	EDINBORO PA 16412	
	814/490-1754	
	www.snowmobilepisc.com	
PYMATUNING TRAIL BLAZERS (R 2)		
MERCER COUNTY	P.O. BOX 28	
	JAMESTOWN PA 16134	
	814/720-6584	
<u>RED ROSE SNOWMOBILE CLUB</u> (R 8)		
LANCASTER COUNTY	1167 OLD LINE ROAD	
	MANHEIM PA 17545	
	717/273-1282	
ROLLING RIDGE MOTORSPORTS CLUB INC. (R 3)		
WESTMORELAND COUNTY	2827 BOWMAN AVE	
	MCKEESPORT PA 15132	
	412/537-7760	
	www.rollingridgeclub.org	
SCAGBURNER'S SNOWMOBILE CLUB (R 9)		
CAMBRIA COUNTY	386 FRIENDS AVE.,	
	BEAVERDALE PA 15921	
	814/487-5959	
SENECA HIGHLANDS SNOWMOBILE CLUB (R4)		
MCKEAN COUNTY	305 STICKLES HOLLOW	
	SMETHPORT PA 16749	
	814/598-5041	
<u>SNOWMOBILE CLUB OF ADAMS CO</u> (R 5)		
ADAMS COUNTY	PO BOX 272	
	ARENDTSTVILLE PA 17303	
	717/633-6690	
	http://smcofadamscounty.org	
SOUTHERN POTTER SMC (R 7)		
POTTER COUNTY	PO BOX 31	
	AUSTIN PA 16720	
	814/647-8440	
	southernpottersnowmobileclub.org	
ST MARYS AREA SNOWMOBILE ASSOC. (R 4)		
ELK COUNTY	264 WEST CREEK ROAD	
	ST. MARY'S PA 15857	
	814/594-7825	
	www.smsnowmobile.com	
STATELINE SNO-TRACKERS (R 1)		
	P O BOX 37	
	CONNEAUT OH 44030	
	440/536-4190	
	www.sno-trackers.org	
SUGAR VALLEY SNOWRIDERS (R 10)		
CLINTON COUNTY	PO BOX 143	
	LOGANTON PA 17747	
	570/725-3854	
SUSQUEHANNA COUNTY SNOWMOBILERS ASSOC. INC. (R12)		
SUSQUEHANNA COUNTY	PO BOX 552	
	MONTROSE PA 18801	
	607-206-6387	
TIONESTA VALLEY SMC (R 1)		
WARREN COUNTY	694 MOHAWK AVE	
	WARREN PA 16365	
	814/726-2774	
TRI COUNTY SNOW BLAZERS INC (R 1)		
ERIE COUNTY	PO BOX 227	
	CORRY PA 16407	
	814/664-2117	
	www.tricountysnowblazers.com	
TRIANGLE S SMC (R 1)		
ERIE COUNTY	PO BOX 2	
	EAST SPRINGFIELD PA 16411	
	814/434-6999	
	www.trianglessnowmobileclub.org	
WALES SNO-DRIFTERS INC (R 1)		
ERIE COUNTY	PO BOX 11283	
	ERIE PA 16514	
	814/440-0595	
	www.walesnodrifiers.com	
WARREN COUNTY SNOWMOBILE CLUB INC (R 1)		
WARREN COUNTY	PO BOX 76	
	SUGAR GROVE PA 16350	
	814/726-0315	
WASHBURN TRAILRUNNERS SMC		
	PO BOX 561	
	WASHBURN ME 04786	
	207/455-8439	
WEST END TRAILBLAZERS INC. (R 7)		
POTTER COUNTY	PO BOX 69	
	ROULETTE PA 16746	
	814/544-7345	
ASSOCIATE MEMBERS (Region)		
LODGING:		
19TH GREEN MOTEL	PO BOX 37, 2761 STATE ROUTE 28	
	OLD FORGE NY 13420	
	315/369-3575	
BEAR CREEK MT RESORT (R 6)		
	101 DOE MT LANE	
	MACUNGIE PA 18062	
	610/682-7100	
CHRISTY'S MOTEL	PO BOX 854, MAIN STREET	
	OLD FORGE NY 13420	
	315/369-6138	
COLTON POINT MOTEL (R 7)		
	4643 RT 6	
	WELLSBORO PA 16901	
	570/724-2155	
DEB'S CROSS FORK INN (R 7)		
	PO BOX 314	
	CROSS FORK PA 17729	
	570/923-1619	
HILLTOP LODGE'S SNO'BILE, DIRT BIKE, & QUAD FARM (R4)		
	977 MOORE HILL ROAD	
	EMPORIUM PA 15834	
	609/214-7817	
NORTHERN DOOR INN	356 W MAIN ST	
	FORT KENT ME 04743	
	207/834-3133	
NORTHERN OUTDOORS SNOWMOBILE RESORT		
	1771 US ROUTE 201, P O BOX 100	
	THE FORKS ME 04985	
	207/663-4466	
QUALITY INN & SUITES	13954 STATE HWY M-28	
	NEWBERRY MI 49868	
	906/293-3218	
THE FOREST LODGE & CAMPGROUND (R4)		
	44078 ROUTE 66	
	MARIENVILLE PA 16239	
	814/927-8790	
THE SPOONWOOD INN (R4)		
	5509 ROUTE 6	
	KANE PA 16735	
	814/561-1365	
WINSLOW HILL BED & BREAKFAST/WALNUT ACRES (R 4)		
	2313 WINSLOW HILL ROAD	
	BENEZETTE PA 15821	
	814/787-4212	
OTHER		
CORINGRATO INURANCE AGENCY (R 6)	235 PERSHING BLVD	
	WHITEHALL PA 18052	
	610/266-1878	
HARTMAN PUBLISHING COMPANY (R 5)	2286 BLACK ROCK RD	
	HANOVER PA 17331	
	717/633-5051	



PRINOTH  
264 NH ROUTE 106  
GILMANTON NH 03237  
603/267-7840

ROCK RUN RECREATION (R 9)  
PO BOX 94 1228 ST LAWRENCE ROAD  
PATTON PA 16668  
814/674-6026

RESTAURANT:  
BEECHWOOD INN (R 1)  
9866 WATTSBURG ROAD  
ERIE PA 16509  
814/825-2999

RETAIL :  
CHOKO DESIGN  
6505, BOUL. METROPOLITAIN EST  
ST-LEONARD QUE H1P1X9  
514/327-7994

KEENERS KOUNTRY STORE (R 7)  
4477 CHERRY SPRINGS RD  
COUDERSPORT PA 16915  
814/435-2176

TOURISM :  
ALLEGHENY NATL FOREST VISITORS BUREAU (R4)  
PO BOX 371  
BRADFORD PA 16701  
800/473-9370

KELLNER SNOW TOURS LLC (R 6)  
495 HEFLIN RD  
SCHWENKSVILLE PA 19473  
610/287-6594

DEALER &  
ACCESS. DEALER MEMBERS

(SLED BRAND) (REGION)  
A. J.'S OUTDOOR POWER EQUIPMENT (R 7)  
1699 SOUTH MAIN STREET  
MANSFIELD PA 16933  
570/662-1700

ALEK'S POWERSPORTS (P, Y) (R 1)  
1501 PENINSULA DRIVE  
ERIE PA 16505  
814/833-3861

BAER SPORT CENTER (P) (R 12)  
330 GRANDVIEW AVENUE  
HONESDALE PA 18431  
570/253-2000

BEST LINE EQUIPMENT (R 10) (P)  
890 LYCOMING MALL ROAD  
MUNCY PA 17756  
570/308-3015

BEST LINE POWERSPORTS (R 10) (P)  
2031 GENERAL POTTER HIGHWAY  
CENTRE HALL PA 16828  
814/237-0897

BILL CASE POLARIS S-S (P) (R 12)  
408 WELCOME LAKE ROAD  
BEACH LAKE PA 18405  
570/729-7402

BONALLE AUTO SALES (R 8)  
501 EAST PENN AVENUE  
CLEONA PA 17042  
717/269-5777

BONNER SPORTS & RV (R 10)  
5335 N. STATE RTE 44  
JERSEY SHORE PA 17740  
570/753-3801

BROOKS CAMPER SALES (Y) (R 3)  
1028 MEMORIAL BLVE  
CONNELLSVILLE PA 15425  
724/628-5625

BUSCHYBOYS MOTORSPORTS (R 1)  
PO BOX 82  
MCKEAN PA 16426  
814/897-6206

CAMPBELL-PETERSON TRAIL & TURF (A, Y) (R 2)  
220 HADLEY ROAD  
GREENVILLE PA 16125  
724/588-4533

CANYON MOTOR SPORTS (P) (R 7)  
PO BOX 207  
GAINES PA 16921  
814/435-2878

CASTLE SALES CO, INC.  
PO BOX 10417  
GREEN BAY WI 54307  
920/336-7800

F & S YAMAHA & MARINE INC. (Y) (R 5)  
1800 SMITH STATION ROAD  
SPRING GROVE PA 17362  
717/632-6382

FIISK DISTRIBUTING, INC.  
1274 N. LYNDONVILLE ROAD  
LYNDONVILLE NY 14098  
585/765-2466

FLETCHER'S SALES & SERVICE (A) (R 2)  
701 GEORGETOWN ROAD  
HADLEY PA 16130-1209  
724/253-3225

GELLNERS SALES & SERVICE (A) (R 2)  
1516 PERRY HIGHWAY  
PORTERSVILLE PA 16051  
724/368-8490

HAYES PERFORMANCE (R 1)  
44641 STATE HWY 77  
SPARTANSBURG PA 16434  
814/654-2152

HENRY H. HARTMAN STEINER SALES & SERV. (R 5)  
2300 BLACK ROCK RD  
HANOVER PA 17331  
717/637-3741

HORN'S OUTDOOR (P, S) (R 6)  
1169 MT BETHEL HWY  
MT BETHEL PA 18343  
610/588-6614

HOWARD'S INC. (A, S) (R 7)  
10 ICE MINE ROAD  
COUDERSPORT PA 16915  
814/274-9800

KENNEDY RV & POWERSPORTS, INC (A) (R 5)  
1394 OLD YORK ROAD  
DILLSBURG PA 17019  
717/432-9741

KERMIT K KISTLER INC. (P) (R 6)  
7886 KINGS HIGHWAY  
NEW TRIPOLI PA 18066  
610/298-2011

KEYSTONE MOTORIZED TOY STORE (Y, P) (R 9)  
16432 DUNNINGS HIGHWAY  
DUNCANSVILLE PA 16635  
814/696-5420

KNEPPERS REPAIR (R 3)  
1315 INDIANTOWN ROAD  
SOMERSET PA 15501  
814/445-2499

KURTZ MOTORSPORTS INC. (S) (R 10)  
3720 SPRINGTOWN ROAD  
WATSONTOWN PA 17777  
570/538-2160

KURTZ PERFORMANCE, LLC (R 8)  
791 FLEETWOOD LYONS RD  
FLEETWOOD PA 19522  
610/944-7660

LAKE COUNTRY MOTORSPORTS INC. (P) (R 7)  
56 N BULLOCK ROAD  
MANSFIELD PA 16933  
570/662-2215

LARRY'S SPORT CENTER (Y) R 7)  
RT 6 PO BOX 236  
GALETON PA 16922  
814/435-6548

LEISURE TIME HONDA-SUZUKI (S) (R 1)  
729 E. COLUMBUS AVE.  
CORRY PA 16407  
814/664-4606

M & S SALES & SERVICE (A) (R 8)  
3385 DIVISION HWY  
NEW HOLLAND PA 17557  
717/354-4726

MARTIN MARINE SALES (P) (R 9)  
763 PIKE ROAD  
JOHNSTOWN PA 15909  
814/749-9931

METZLER AUTO, TRUCK & TRAILER (R 9)  
3979 COVE MOUNTAIN ROAD  
MARTINSBURG PA 16662  
814/793-3726

MOORE'S GARAGE (R 10)  
2336 PIKES PEAK ROAD  
ALLENWOOD PA 17810  
570/772-7062

MOSITES MOTORSPORTS (S) (R 3)  
1701 LINCOLN HIGHWAY  
NORTH VERSAILLES PA 15137  
724/864-2800

MOTOSPORTS CYCLE SHOP INC. (R 5) (S)  
2117 BALTIMORE PIKE  
HANOVER PA 17331  
717-632-7093

MOYERS OUTDOOR POWER EQUIP. (R 6) (P, Y)  
403 MAIN STREET  
HARLEYSVILLE PA 19438  
215/256-6163

MYERS MOTORSPORTS (R 4)  
3176 ROUTE 219  
KANE PA 16735  
814/779-3745

NEIMAN'S GARAGE & EQUIPMENT (R 5) (A)  
704 EAST CANAL ROAD  
DOVER PA 17315  
717/292-2101

NORTH-SOUTH CONNECTION TRAILER SALES  
MAIN STREET  
OLD FORGE NY 13420  
315/369-6334

OFF ROAD EXPRESS (Y) (R 1)  
10320 WATTSBURG ROAD  
ERIE PA 16509  
814/825-2396

PAT & SON SERVICE CENTER (A, P) (R 8)  
1500 N STATE RT 934  
ANNVILLE PA 17003  
717/867-4406

READING BOAT WORKS INC. (A) R 8)  
1084 CEDAR HILL DRIVE  
READING PA 19605  
610/926-4739

REVNEEZ (R 7)  
1412 BEECHWOOD LAKE ROAD  
WESTFIELD PA 16950  
814/628-2227

SHERWOOD GROVES POWERSPORTS (S) (R 11)  
454 GOLDEN MILE RD  
TOWANDA PA 18848  
570/265-2107

SLEDTRACK  
115 ALLEN RD  
PORT CRANE NY 13833  
607/693-1031

SMITH MARINE (R 6) (S)  
573 EAST BUTLER AVE.  
NEW BRITIAN PA 18901  
215/345-1621

SPORTS 'N TURF OF LANCASTER (P, S) (R 8)  
4126 OREGON PIKE  
EPHRATA, PA 17522  
717/859-5455

SPORTS 'N TURF OF POTTSTOWN (P, S, A) (R 8)  
2568 SCHUYLKILL RD  
SPRING CITY PA 19475  
610/495-7122

THE SHOP (R 1)  
8518 SOUTH LAKE ROAD  
JAMESTOWN PA 16134  
814/720-5843

POWDER OR TRAIL, DEAL WORKS  
ON BOTH.



Versatility – that's what Arctic Cat® XF crossover machines are all about. Get amazing offers when you buy an XF, CrossTour, High Country™ or Cross Country™. These machines come with smooth suspensions, strong, lightweight chassis and powerful engines, including the 6000 C-TEC2,™ 7000 C-TEC4,™ 8000, and 9000 C-TEC4. So come in and blast out today.



READING BOAT WORKS INC  
1084 CEDAR HILL DRIVE,  
READING - PA - 19605 - 610-926-4739

<http://www.readingboatworks.com> - email: [rboatworks@epix.net](mailto:rboatworks@epix.net)



# BEST LINE POWERSPORTS



**2017 Polaris® 600 RUSH® XCR 121 1.352" Cobra LE**

Stk #E064624 (40)  
MSRP: \$11,999

**NOW ONLY: \$9,400**

**2017 Polaris® 600 Switchback® PRO-S ES Velocity Blue**

Stk #A060948 (41)

**NOW ONLY: \$9,600**



**2017 Polaris® 600 Switchback® Adventure Titanium**

Stk #E064138 (41)

**NOW ONLY: \$10,000**



**2018 Polaris® 800 SWITCHBACK PRO-S ES INDY® Red**

Stk #E072753 (40)

**ONLY: \$13,199**

**Shop the Area's BEST Selection of New and Pre-Owned in-stock Sleds!**



2031 General Potter Hwy.  
Centre Hall, PA  
814-237-0897

890 Lycoming Mall Dr.  
Muncy, PA  
570-308-3015

183 Tomahawk Rd.  
Towanda, PA  
570-265-4440

**www.BestLinePowersports.com • Find Us On:** [f](#) [t](#) [in](#)



\*Offers expire 01/31/18. On select models. See your dealer for details. Warning: The Polaris RANGER® and RZR® are not intended for on-road use. Driver must be at least 16 years old with a valid driver's license to operate. Passengers must be at least 12 years old and tall enough to grasp the hand holds and plant feet firmly on the floor. All SxS drivers should take a safety training course. Contact ROHVA at [www.rohva.org](http://www.rohva.org) or (949) 255-2560 for additional information. Drivers and passengers should always wear helmets, eye protection, protective clothing, and seat belts. Always use cab nets or doors (as equipped). Be particularly careful on difficult terrain. Never drive on public roads or paved surfaces. Never engage in stunt driving, and avoid excessive speeds and sharp turns. Riding and alcohol/drugs don't mix. Check local laws before riding on trails. ATVs can be hazardous to operate. Polaris adult models are for riders 16 and older. For your safety, always wear a helmet, eye protection and protective clothing, and be sure to take a safety training course. For safety and training information in the U.S., call the SVIA at (800) 887-2887. You may also contact your Polaris dealer or call Polaris at (800) 342-3764. ©2014 Polaris Industries Inc. Photos are for illustration purposes only. Dealer not responsible for typographical errors. 18BLPL-MHC-KSS010118

## NORTH SOUTH Connection TRAILER SALES

### Available Trailers:

- Cargo & Contractor
- Landscape
- Dump
- Car Haulers
- Equipment
- Snowmobile
- Utility
- Enclosed

We can customize our trailers with any options you may desire.



**Main St., Old Forge**  
**315-369-6334**

**Rt. 12, Boonville**  
**315-942-2399**

**trailers@telenet.net**  
**www.blizzardmfg.com**  
**www.northsouthconnection.com**