




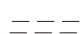

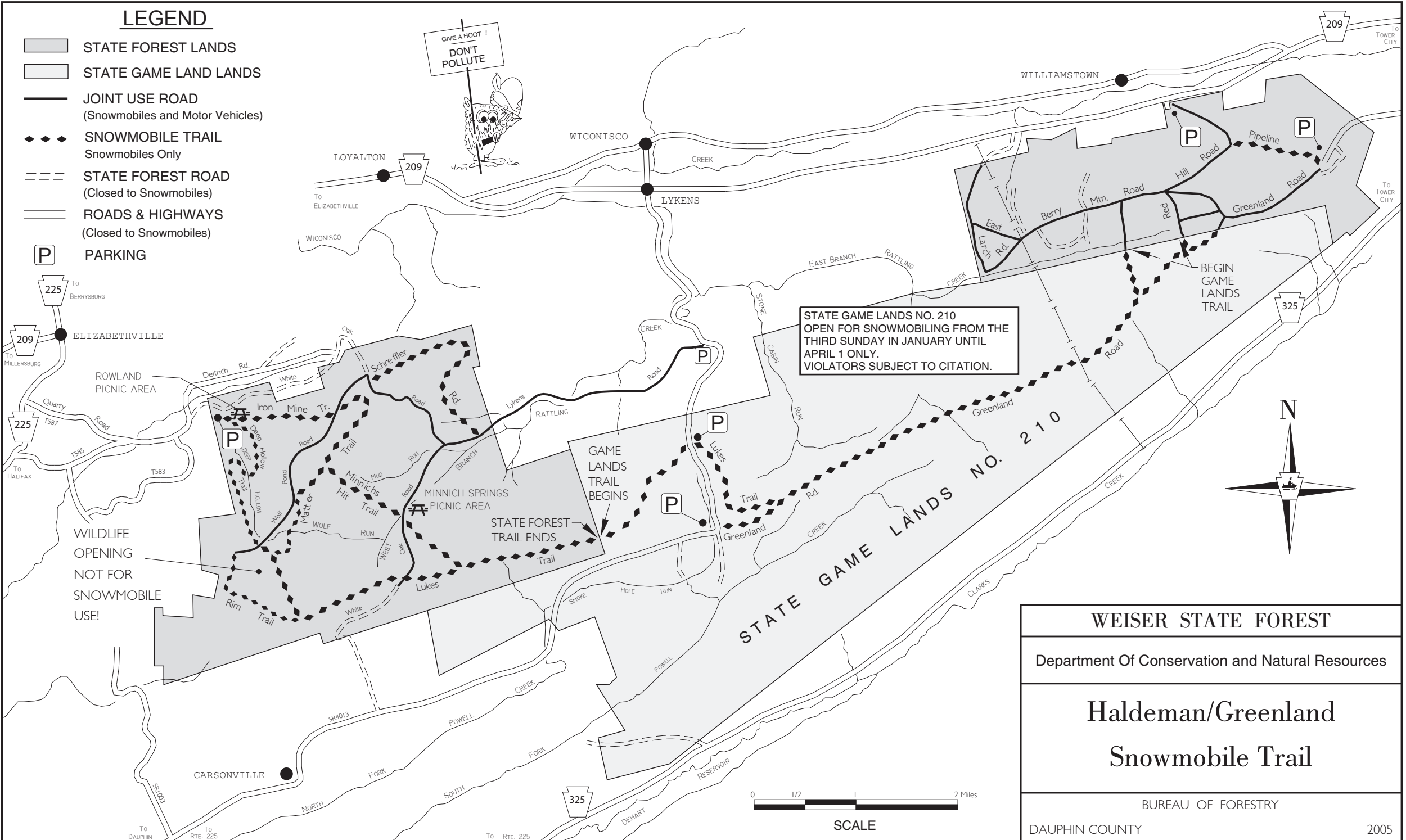


# LEGEND

-  STATE FOREST LANDS
-  STATE GAME LAND LANDS
-  JOINT USE ROAD  
(Snowmobiles and Motor Vehicles)
-  SNOWMOBILE TRAIL  
Snowmobiles Only
-  STATE FOREST ROAD  
(Closed to Snowmobiles)
-  ROADS & HIGHWAYS  
(Closed to Snowmobiles)
-  PARKING



STATE GAME LANDS NO. 210  
OPEN FOR SNOWMOBILING FROM THE  
THIRD SUNDAY IN JANUARY UNTIL  
APRIL 1 ONLY.  
VIOLATORS SUBJECT TO CITATION.

WILDLIFE  
OPENING  
NOT FOR  
SNOWMOBILE  
USE!

<b>WEISER STATE FOREST</b>	
Department Of Conservation and Natural Resources	
<b>Haldeman/Greenland Snowmobile Trail</b>	
BUREAU OF FORESTRY	
DAUPHIN COUNTY	2005

