

The Official Publication of the Pennsylvania State Snowmobile Association

# Keystone Snowmobiler



December 2020  
Volume 1 Issue 12

[www.pasnow.org](http://www.pasnow.org)



## Survey says...



# PSSA Survey

## How can PSSA better serve you?

The Pennsylvania State Snowmobile Association (PSSA) would like to know how we can better serve you or your club. Please take a few minutes to answer a brief survey and leave any closing thoughts you may have to help improve both snowmobiling in Pennsylvania and PSSA membership benefits.

Click here:

**<https://tinyurl.com/PSSASurvey>**



# Thank you!



# MOVING FORWARD

December 2020

## HAPPY HOLIDAYS!

Thank you to all the ESSENTIAL workers who go to work every day on our behalf. They help make this Covid situation much easier to deal with. Their dedication to people is to be admired. Please thank all you know for their service.

The first sight of snow and everyone wants to ride. Trails open in different parts of the state at different times. Check with the location where you intend to ride before you ride. It is best to check with the local club, Allegheny National Forest, Game Commission and the state depending on where you will ride before you go. Follow local, state and federal guidelines. Other states have regulations that may affect where/when you can ride. Ride Enjoy and Be Safe!

Hunters! Have a good time but be safe. The hunting calendar has expanded to a few Sundays in Pennsylvania. One Sunday may impact your snowmobile experience. The Sunday after Thanksgiving is now a deer hunting Sunday on Game Commission property. Private property owners may also hunt on this day. Check the location of the trail before you ride.

Many clubs received a mini-grant via PSSA Mini-Grant Program to be used to maintain, upgrade and improve trails and grooming. It takes much work and dedication to make our trails top notch and enjoyable to ride. Without their dedication and spirit of volunteerism we would not enjoy the trails we have today. If you haven't thanked them already please do so. Join a club and join PSSA.

Recently PSSA sent a flyer to all our members requesting donations. We are receiving donations from clubs and individuals. Thank you. Every dollar helps promote snowmobile recreation.

**(continued on next page)**

# MOVING FORWARD

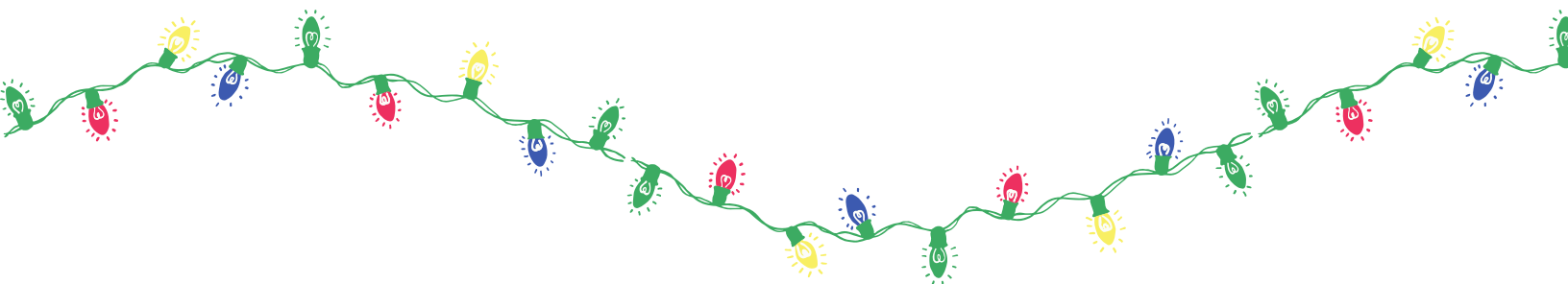
I hope you had a chance to participate in our ZOOM presentation and watch the live streaming of our Blizzard Trailer and BRP ATV raffle. Travis Mathna attended the F&S Open House and sold over \$1000 in ticket sales. After that weekend he set up the live streaming of the drawing so we could watch it in real time. Congratulations to Travis, Kathy, Arline, Chick and anyone else who worked behind the scenes to make it happen. It was a job well done.

Thank you to all who bought/ sold tickets and promoted the raffle. All helps. Raffle winners are listed elsewhere in the Keystone Snowmobiler. The winner of the ATV actually drove from the Pittsburgh area to the Open House and bought a ticket there. Woh!

The recently formed Communication Committee (formerly Social Media) has been meeting to discuss/upgrade our Website, Keystone Snowmobiler and Facebook page. These portray the image of what PSSA is all about. Snowmobilers search the website for current information. It is important that all communications are up-to-date and accurate. Thank you to this committee for tackling a very difficult and time consuming job. Committee members: Keystone Snowmobiler, Newsletter Chair: Terry Wood, members: Rich Hayes, Arline LaTourette, Kathy Woolever, Maura Donley; Website Chair: Larry Martin, members: Kathy Woolever, Maura Donley; Facebook Chair: Cindy Barrick, members: Randy Green, Kathy Woolever, Maura Donley

The Allegheny National Forest is working with the clubs in that region to install snow cameras. Although PSSA has several cameras on its website we need more coverage of snow conditions across the state. If a club has a snowcam that you would like PSSA to add to the website contact [member@pasnow.org](mailto:member@pasnow.org)

**(continued on next page)**





# MOVING FORWARD

The DCNR Snowmobile/ATV Advisory Committee (SAAC) recently held their meeting. A great deal of time was spent discussing the On-line Youth Snowmobile Certification Course. Cindy Barrick presented data concerning the decrease in club safety course attendees. Youth who take the On-line course do not receive the actual snowmobile equipment information/experience or contact with instructors and clubs. This had been a great way for clubs to increase their membership and discuss the safe way to ride and obey the law. If you have found a similar situation contact your local legislative representative and ask to have the course changed to at least the “hands on” part.

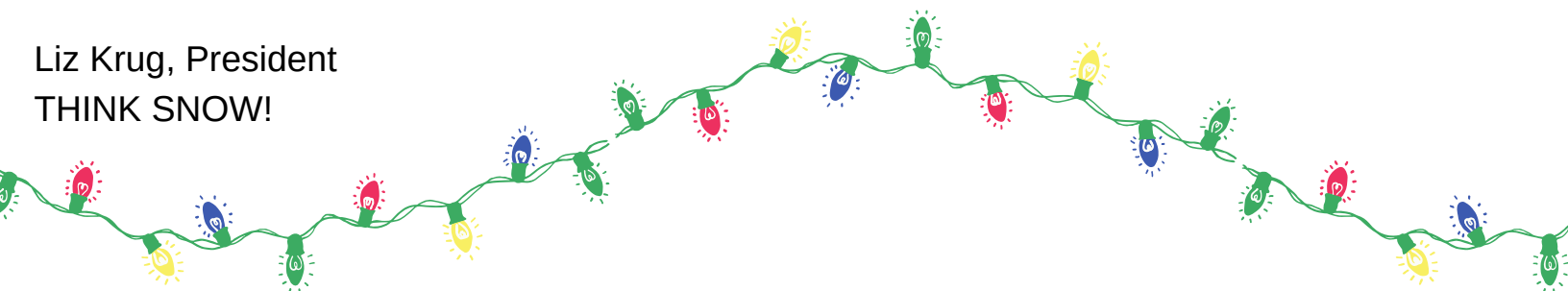
American Counsel of Snowmobile Associations (ACSA) – beginning in January 2021 the Executive Secretary and Office Secretary will be working from home. Phone numbers, website etc. will not change. Both Christine Jourdan and Sue Lewis took a 20% cut in pay and less hours to help keep things running during this time. ACSA is a great benefit to the snowmobile community and we owe Christine and Sue a debt of gratitude for their continued service.

You can help PSSA by asking Businesses to give a 10% discount to PSSA members. This discount can help reduce the bill significantly for those who take weekend trips / buy accessories. Contact Arline LaTourette for more information.

**The PSSA Survey is on the first page of this newsletter, on the website and FaceBook. Please take the time to complete it. Your voice counts.**

At this time of year members are looking for ways to help others. The Snow Angel Medical Fund is available for donations. The money donated is used to help defray expenses of children under 18. Contact Loretta Hayes or Kelly Watkins for more info concerning how to apply for a grant. Donations should be sent to the Palmyra Office. Thank you. Enjoy the Holiday and New Year and Be Safe!

Liz Krug, President  
THINK SNOW!



# Presque Isle Snowmobile Club

## Presque Isle Snowmobile Club installing 4' culvert pipe with grant dollars on main trail in Erie County, PA



## HAVE SOME CLUB NEWS?

Many thanks to all the snowmobile clubs that have submitted news and information. We encourage all clubs to send us information each month. Here's how to submit your news for publication:

Email address: [member@pasnow.org](mailto:member@pasnow.org)

**SUBJECT LINE: KEYSTONE SNOWMOBILER**

Include: Full name of your club in the email

Pictures: jpeg/png format

**DEADLINE: 20TH OF THE MONTH PRIOR TO PUBLICATION**



# GLENDALE LAKE SMC

Greetings from the Glendale Lake SMC. We're counting down till we'll all be out riding our sleds. Speaking of riding, just a reminder that our club trail doesn't open till the third Sunday in January since parts of it are on State Game Lands. State Park Trails open December 15th and the ANF Trails don't open till a few days after that (Dec 20). Please respect these opening dates.

Due to Covid restrictions our last club meeting was only attended by the Officers and Board. Special guests at the meeting was the Park Superintendent and Park Manager. The Park Leaders really appreciated our 635 volunteer hours that went into the construction of the Shomo Run connector trail. This trail connects the parks northern trails to the parks southern trails - for the first time ever. Previously these two trail systems were separated by the lake and there was no connection between the two. The connector trail that we planned and constructed creates one 30 mile trail system that covers both sides of the park. This trail will also open up biking on the southern side of the park for the first time ever. The DCNR Park Manager, Jessica, and her staff are thrilled with the connector trails completion. With its completion they were able to get special DCNR Funding to put in a Parking Area for the new trail link and their Environmentalist will lead specials tours of the newly constructed trail from there. Working with our group opened up this funding to the Park and allowed for these two firsts in the Park.

Also discussed was our recent park trail clean up that included 48 Volunteer Hours on Oct 25. We cleared all the trails in the Park and cut away all downed trees. It was discussed that additional signage needs added to the field near the treatment plant and the crossing at Beaver Valley Road and Bollinger trail needs level with road (done).



# GLENDALE LAKE (CONT)

Also at the November meeting the club completed the PA Snowmobile Survey from a club perspective. All club members are urged to individually complete the Survey at: <https://www.pasnow.org/how-can-pssa-better-serve-you/>

Just a reminder to check us out on FaceBook: <https://www.facebook.com/GLSMClub/>  
Or check out our Group at: <https://www.facebook.com/groups/864367483745347/>.

Club membership applications and maps can be found on the Group page. Please join or renew, we need your membership to be able to continue to do all the great things we're doing for the area and the sport.

Our Club is located in south central PA, about 1.5 hours east of the Laurel Highlands and about 45 minutes west of Black Moshanon State Park. We're not far from Ebensburg and Altoona. If you're from this area or ride in this area, we urge you to join our club. We meet the first Monday of the month, year round at 7:30 PM at the Patton Sportsman's Club or TBA. We have a great time at our Club Meetings. We take care of business, enjoy some great food if you're hungry, and swap some real good sled stories. Come join us. Stay safe till then.

Randy Green  
Glendale Lake SMC  
[glendalelakesmc@gmail.com](mailto:glendalelakesmc@gmail.com)





# YOUR FAVORITE PA TRAIL

N'or Eastern. One of my favorite word(s) to hear during my favorite time of the year. But alas, sometimes these special storms don't make it as far west in PA as I'd like. Not to fear, RB Winter State Park to the rescue. This trail system in the north eastern center part of the state often cashes in on N'or Eastern storms, even when other trail systems in the state don't. The extensive trail system of the park extends both north and south of Rt 80, and is easily accessible from the Interstate. Snowmobile parking is right off the exit ramp. Riding can be found here when it doesn't exist anywhere else in the state. A word of caution, on big snow days, when there isn't riding anywhere else, the very large main snowmobile trailer parking area fills up quickly and if you're a late arrival you may be forced to find parking at the auxiliary areas. But even with the parking lots full the trails are still virtually empty do to the expanse of this trail system.

The riding in this area is both beautiful and extensive. You'd need two days to cover the whole trail system. The area has many wide, long and thanks to great grooming, smooth trails. There are several windy connector trails in the system but not many. It's mostly wide and smooth. This part of PA is a beautiful as it gets. If you've driven your car thru this part of the state on I-80 you know how desolate, beautiful and rugged it is. And just image that up close on your sled. Although the trails are wide and long, don't forget to slow down to take in the creeks and streams and evergreen forests that populate this area. Sometimes it's hard, you have a perfectly groomed 40 foot wide trail with an absolutely gorgeous stream right beside it, what's a guy to do, let'er rip or slow it down and enjoy the scenery. Doing the trail twice in both directions solves this dilemma. Of course this area isn't without it's draw backs. The windy connector trails do at times get beat up due to heavy traffic, and these seems to have an attraction for some 4WD'ers. I've seen more than one Subaru ditched and abandoned on this trail system. But overall the great trails and scenic beauty are really something. One of my favorite trails on the north side winds thru a mature Hemlock forest along a flowing winter creek and beside several rustic camps, one sweet ride. RB Winter also excel's at low snow and deep snow riding. With the parks elevation and excellent grooming even when the snow is very marginal, there's good riding here. You do have to take some care not to ride out of the snow, and riding can be limited, buy hey, you're still riding! And talk about deep snow, when that N'or Eastern really slams RB, it's 2 to 3 foot of fresh powder to conquer. For maximum fun, make sure you have a long track or you'll be stuck following in someone else's tracks or just plain stuck. The powder is light and deep and all kinds of fun. It's a rare experience to see this kind of snow in PA.

# YOUR FAVORITE PA TRAIL

And unlike some other State Park Snowmobile trail systems this one does offer some off trail amenities. Recently the Bald Eagle SMC with some assistance from PSSA completed a new legal trail to Boomerang's Restaurant. I haven't eaten there yet but I've been told the food is very good. There's also access to food and gas on the northern section of the trails too. Another special quality about riding this area.

Check out RB's great trail system yourself some time:

[www.apps.dcnr.state.pa.us/forestry/snowmobile/maps/d7-snomo.pdf](http://www.apps.dcnr.state.pa.us/forestry/snowmobile/maps/d7-snomo.pdf) Some video of RB

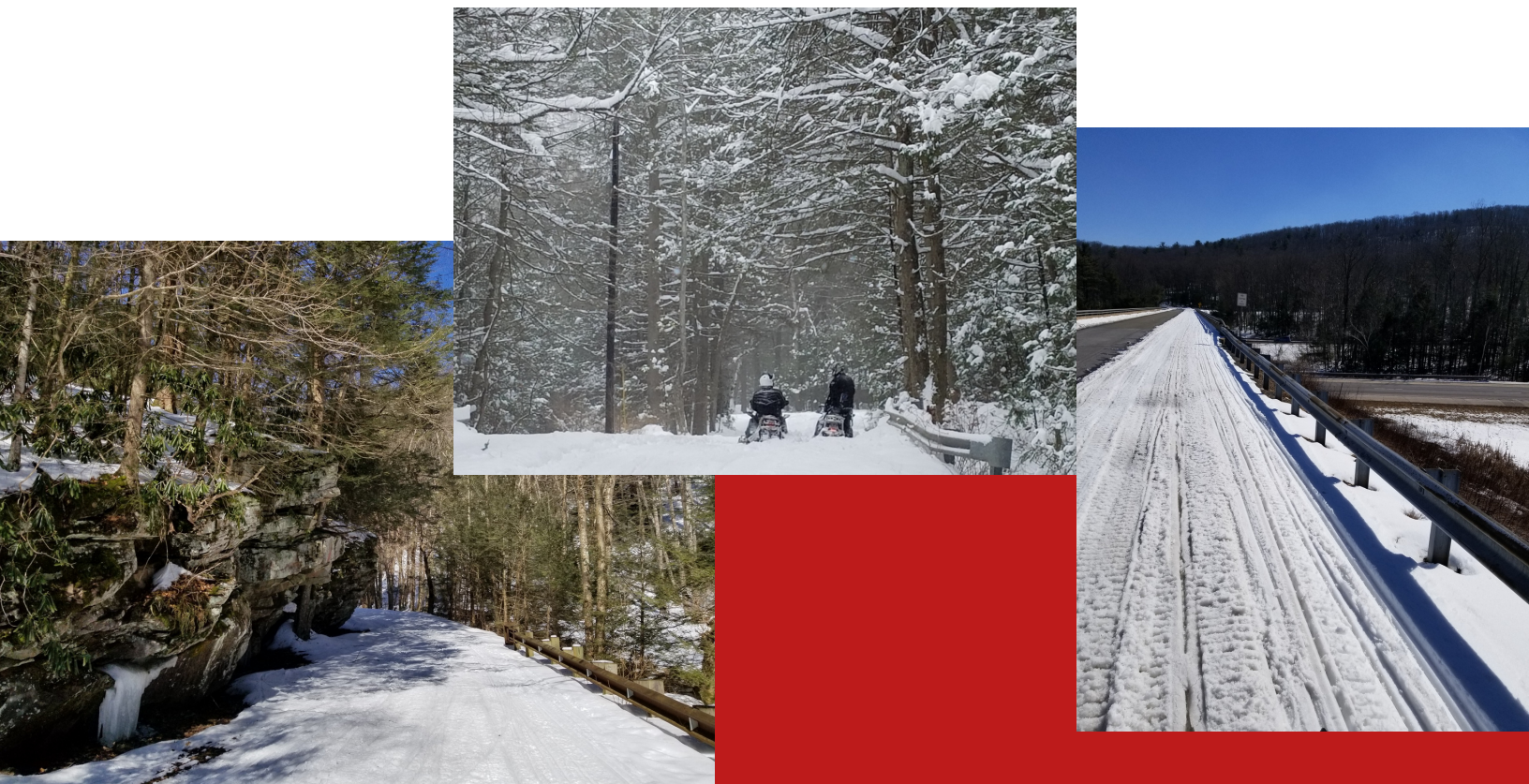
riding: [www.facebook.com/GLSMClub/videos/1490318231003075/](https://www.facebook.com/GLSMClub/videos/1490318231003075/) And as always we encourage you to join the local club in the area:

[www.facebook.com/BaldEagleSnowRiders/](https://www.facebook.com/BaldEagleSnowRiders/) And for PSSA updates in the area:

[www.facebook.com/PSSAR10/](https://www.facebook.com/PSSAR10/)

Are you willing to share your Favorite Trail? If so, Keystone Snowmobiler would like to hear from you too. Send your story and pictures to [info@pasnow.org](mailto:info@pasnow.org). Be sure to put Keystone Snowmobiler in the subject line. Share your sledding favorites with your fellow sledders. PA has some great places to ride, let's hear about them.

Submitted by Randy Green







# ACSA CALENDAR CONTEST

## **Order your 2021 ACSA Calendar through PSSA today!**

Make check payable to "ACSA" and mail to :  
PSSA

P.O. Box 10126

Erie, PA 16514

Calendars will only be mailed to one address.

For only a \$20 donation to ACSA, the 2021 calendar offers you 366 chances to win—over \$14,500 in prizes!

Only 3,000 calendars printed.

Name of winner is returned to ACSA to be part of the next drawing and all subsequent drawings.

Cash prizes will be awarded by check.

Winners need not be present

Prizes will be mailed promptly.



# ISMA

International  
Snowmobile  
Manufacturers  
Association

## ISMA NEWS

### US Department of Commerce releases Economic Output Data for Outdoor Recreation

**HASLETT, MI, November 20, 2020:** The US Department of Commerce, Bureau of Economic Analysis has released the Economic Output for outdoor recreation for this past year. The Recreation Industry generated \$788 Billion Dollars in 2019, which is \$ 10 Billion Dollars higher than in 2018. The outdoor recreation economy continues to grow and outperform the economic growth in the United States during the pandemic. Individuals are continuing to reach out and recreate in the great outdoors across the United States. The latest report shows that Outdoor Recreation, as part of the Gross Domestic Product, is 2.1%. What does that mean you ask? Outdoor Recreation produces more of the GDP and is bigger than mining and agriculture! Snow Activities, including snowmobiling, grew 3.1%. Most of that activity is within rural America and is the economic engine for many rural families and their economy.

Outdoor Recreation generates 5.2 million jobs in the United States. The states with the largest percentage of state GDP related to outdoor recreation are Hawaii, Vermont, Montana, Outdoor Recreation data Florida, Maine, and Wyoming. In Montana, 32,000 jobs are generated by the Outdoor Recreation Economy which is 4.7% of the state's GDP. Boating and Fishing is the largest conventional activity for the Recreation Economy generating \$23.6 Billion Dollars of economic activity while RVing is the second largest activity nationally generating \$18.6 Billion Dollars of economic activity. Snow Activities was rated the 6th largest of the economic activities.

Cont.



# ISMA NEWS (CONT)

Snowmobiling is an important part of the overall recreation economy and we generate economic activity during peak winter months when much of rural America is in need of economic output and support.

The recent study underscores that individuals that are outdoor enthusiasts are active in the winter and warmer weather as well. Surveys by ISMA show that approximately 60% of all snowmobilers also ride ATVs and UTVs in the summer. More than 50% of snowmobilers enjoy boating and fishing and recreational camping. Outdoor recreation enthusiasts participate in many activities and they are healthy, strong, and do not participate in a great deal of TV watching and internet-based recreation.

The snowmobile manufacturers and the snowmobile community are pleased to participate with the studies conducted by the Bureau of Economic Analysis within the Department of Commerce. We provide supporting data and information to the department upon request. We highlight the high activity level of the recreational snowmobiling customer base and highlight to elected representatives how we are active supporters of recreation on public land and great, responsible, family activity.

---

## 2020 Raffle Winners

We're please to announce our Raffle winners for the Blizzard trailer & CAN-AM ATV!

CAN-AM ATV – Dana Brier of Zelienople, PA  
Blizzard Trailer – Larry Martin of Kittanning, PA

Thank you so much to our sponsors for providing these fabulous raffle prizes.



# NAVIGATIONAL TOOLS

In the March 2020 Edition of the Keystone Snowmobiler there was an article entitled “PA Riding Still Exists”. The article points out that sometimes you have to make an extra effort to find riding in PA. What the article doesn’t point out is that sometimes there are extra tools or equipment needed too. This article focuses on Navigational Tools.

Are you one of those lucky snowmobilers who can ride out of their house (Local), and know those trails like the back of your hand. Or if snow isn’t at your back door, you’re lucky enough to have a camp or second home in snow country (Campers) and you’re familiarity with the trails in that area is extensive. But if you’re not one of those lucky ones, or if snow isn’t present in your riding area, that means traveling and exploring a new area (Snow Chaser) and new trails. And other times you just want to check out somewhere new or go on a snowmobile adventure or extended trip (Snow Seekers). FYI, the words in parenthesis describe some typical snowmobile types and are used in the PA Snowmobiler Survey. If you haven’t yet completed the survey, let your voice be heard, go to [www.pasnow.org/how-can-pssa-better-serve-you/](http://www.pasnow.org/how-can-pssa-better-serve-you/).

Most trips require some degree of planning and when traveling to a new area some extra planning may be involved. If the area is new to you or you’re looking to do some new exploration of the area, some navigation equipment is typically necessary. In the past this equipment was quite simple, paper maps or a buddy you could count on for getting you out and back safely. Times have changed.

Now there are multiple options for concurring new ground. And some of the options are cutting edge equipment. Many people still feel that an old fashion but updated paper map is still the best route to a success full ride. Most areas provide them in some form or another and sometimes the moderate cost of the map supports the trail system. And there is some comfort in having something in your hand or easily accessible should your other options fail for one reason or another. A popular sled accessory used to be a map holder and some are still available to keep your map within eyesight while on the trail. A drawback of maps are they can get wet, out dated, or even worse, lost.

Like everywhere else in life technology is providing some new options. For discussion I’ll divide them into three basic categories:

cont.



# NAVIGATIONAL TOOLS

## GPS

These are dedicated navigational devices that can be easily mounted to your snowmobile. Usually it's necessary to purchase and download snowmobile trail maps since they don't come standard with the GPS like road maps do. Make sure you purchase a waterproof model and make accommodations to power it. Some of the best maps are only available on GPS.

## Phones and Tablets

Google Maps and Waze don't include snowmobile maps but several APPS do including Polaris Ride Command, and many other State (NY) and Providence (ON, QE) have dedicated APPS for purchase. RAM Mounts and several other companies make holders for your phone or tablet that easily attach to your sled. Some of these holders can even charge the device. Since some phones and tablets aren't water proof, that can be an issue. Another concern is how lithium batteries hold up and don't charge in the cold and some of these APPS are real battery hogs.

## Snowmobile Manufactures Built in Devices

All the sled manufactures have been offering built in Navigational devices for some time now that are part of the instrument panel with the speedometer and tach. In the past these built in devices have had mixed reviews and some limitations. For 2021 the sled manufactures have upped their game with introductions of new devices that really seem to meet the need of the average sledder. Features that are common to your phone, and standard GPS devices are standard on these new introductions.

cont.



# NAVIGATIONAL TOOLS

The third and probably best Navigational Tool is your snowmobiling friend who offers to lead you on a ride or helps you plan a ride of the new area. The two of you or even your whole group sitting down together to discuss and plan your ride can add to the adventure. And out on the trail, two heads are better than one really plays out when “out in the wilderness” facing uncertainty or looking for the best way back. Or simply looking for the best way, the best trails, the best loop or the best scenery. Either working with your fellow rider, or in other cases just following them can make for a very rewarding trail ride. Some people really enjoy leading and being part of the destination process and others are just happy to have someone to follow. Either way it's great to have someone to enjoy the ride with.

Hopefully this tip can help you better enjoy, and help extend, your snowmobiling season.

Do you have a suggestion for “Tools for PA Riding”? If so, Keystone Snowmobiler would like to hear from you too. Send your article and pictures to [info@pasnow.org](mailto:info@pasnow.org). Be sure to put Keystone Snowmobiler in the subject line. Share your sledding know how and knowledge with your fellow sledders.

Submitted by Randy Green





# SNOWMOBILE SAFETY CLASSES

## 2020-21 MASTER SAFETY CLASS LIST

(sorted by county)

### Online Classes:

Official Pennsylvania Snowmobile Safety Course

---

### Lebanon County

December 5, 2020 – Dutch Trail Cutters Snowmobile Club's annual youth Pennsylvania snowmobile safety course

Where: Bellegrove Fire Company, 1743 Blacks Bridge Road, Annville, PA 17003.

When: Saturday, December 5, 2020 from 8am to 4pm

Register: Please contact Henry or Peggy Hartman at 717-633-5051 or [keystonesnowmobiler@comcast.net](mailto:keystonesnowmobiler@comcast.net) to reserve your spot



## Snowmobile Safety Classes

If your club is holding a Snowmobile Safety class this Fall/Winter please let us know and we will promote the class in the Keystone Snowmobiler. Send all the details to [member@pasnow.org](mailto:member@pasnow.org)

# PREMIUM MEMBER RECOGNITION

PSSA would like to recognize and thank our members who have invested at the Premium Membership level for the 2021 Membership Year

## Blizzard

Jason B. Baver  
Bendal Family, Larry Bendal  
Brown Family, Richard Brown  
Clause Family, Albert Clause  
Bruce E. Cox  
Drohan Family, Troy Drohan  
Nathan & Ingrid Eckhart  
David Enck  
Joseph Gochenauer  
Steven C. Gowman  
Terry Kline  
Krise Family, Timothy Krise  
Arline LaTourette  
Clinton C. LaTourette  
Martin Family, Larry Martin  
Steve Matscherz  
Charles Paige  
Michael Petronchak, Jr.  
Drew Pierce  
Robert Rohrbaugh  
Rohrer Family, B. Rohrer  
Sell Family, Andy Sell  
Sell Family, Robert Sell  
Siska Family, Joseph Siska  
Specht Family, Frederick Specht  
Weiss Family, Julie Weiss  
Willard Family, Joe Willard  
Zartman Family, Gene Zartman

## Storm

Clementoni Family, Michael Clementoni  
Cowgill Family, Charlie Cowgill  
Godshall Family, Ken Godshall  
Hackenburg Family, Mark Hackenburg  
Herr Family, Wayne Herr  
Keiter Family, Kenneth & Tabatha Keiter  
Kirchner Family, Robert Kirchner  
Kistler Family, David Kistler  
McKenney Family, Timothy McKenney  
McMinn Family, Richard McMinn  
Miller Family, Mr & Mrs Michael Miller  
Barry Nolt  
Scott Rodich  
Sklar Family, John Sklar  
Stoltzfus Family, M. Stoltzfus  
Strotman Family, Norm Strotman  
Swierzewski Family, Matthew Swierzewski  
Thomas Family, David Thomas  
Tigar Family, Don Tigar jr  
Zimmerman Family, Keith Zimmerman

## Snow Burst

Adcock Family, David Adcock  
Brussell Family, Gerald Brussell  
Daniel L Christine II  
James Clayton  
Crowl Family, Dave Crowl  
Culnane Family, Billy Culnane  
Clark Eckhart  
Eichelberger Family, Richard  
Eichelberger  
Wesley Garman  
Donald Hess  
Randy Kilmer, Randy Kilmer  
King Family, Bob & Judy King  
Lake Family, Bill Lake  
Landis Family, Randy Landis  
Paul Littleford  
Jacob S. Marinkov  
Miller Family, Bryan Miller  
Mark Nelson  
Orengia Family, Joseph Orengia  
John Sarginger  
Kevin Snoke  
Stroble Family, Ron Stroble  
Thomas Family  
Weisheit Family, Christopher Weisheit  
Werkheiser Family, Kevin Werkheiser  
Wesley Family, Joseph Wesley  
Wolgemuth Family, Wayd Wolgemuth

Thank you!



# DONATIONS APPRECIATED

The PA Powersports Show is the #1 way our organization raises money to advocate for and support snowmobiling in Pennsylvania. We are in the process of raising \$20,000 to make up for this loss of income and are asking that you consider a donation to PSSA in addition to your membership dues. Please also consider a monetary donation in lieu of your usual PA Powersports Auction item if you've supported us this way in the past. We would be very grateful.

Your donation will be used to help PSSA establish and maintain important connections with local clubs to exchange ideas and share important technical information and education on all snowmobile areas of interest. PSSA also works with both federal and state government agencies to preserve and enhance trails and riding opportunities. Our focus includes preserving our natural resources and the environment as well as advocating for the safety and general welfare of snowmobiling. You can make a difference for the good of snowmobiling in Pennsylvania when you send in your donation with your membership dues and raffle ticket funds! Together, let's ensure that all snowmobilers can have safe, fun, and available trails to ride in Pennsylvania!



# LOOKING FOR TRAIL CONDITIONS?

Here's what to do:

Check in with the local snowmobile club!

For a list of clubs in PA click [HERE!](#)

Check out the information DCNR has [HERE!](#)

Visit our [WEBCAMS](#) page for a first hand view!



**NORTHERN  
OUTDOORS**  
The Forks, Maine

**MAINE'S ONLY  
FULL-SERVICE  
SLED RESORT  
WITH BREWERY**

## Ride

Late model 1 and 2 person snowmobile rentals \*  
Direct access to 13,000 miles of groomed ITS trails \* 2 Tucker Sno-Cat trail groomers on-site means smooth trails right from your cabin door

## Rest

Trailside guest houses and cabins to accommodate 2-14 guests \* Giant group hot tub on the deck, aka *The Big Dipper* \* All accommodations have satellite TV

## Refuel

Premium gas and free WiFi available on-site \* Great food and handcrafted ales at the Kennebec River Pub & Brewery



**BOOK YOUR TRAILSIDE CABIN NOW:**

**207.663.4466 [NORTHERNOUTDOORS.COM](http://NORTHERNOUTDOORS.COM)**



# PSSA BOARD OF DIRECTORS



## PRESIDENT

Liz Krug (2021, Erie Co.)  
9820 Lake Pleasant Road  
Erie, PA 16509  
Cell Phone: (814) 464-3971  
ottilia@roadrunner.com



## VICE-PRESIDENT:

Richard Hayes (2020, Allegheny County)  
2485 Parkview Lane  
Allison Park, PA 15101  
Phone: (412) 735-6716  
rahazey@yahoo.com



## SECRETARY:

Charles Walter (2021, Wayne County)  
171 St Mary Church Rd  
Lake Ariel PA 18436  
Phone: (570) 689-4788  
Cell: (570) 877-0244  
walter.charles  
@rocketmail .com



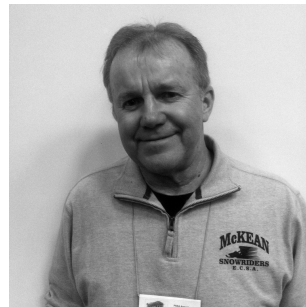
## TREASURER:

Arline LaTourette (2020, Wayne County)  
792 Torrey Road  
Honesdale, PA 18431  
Phone: (570) 729-7865  
arlinedutton@hotmail.com

## DIRECTORS



Terry Wood (2021)  
8622 Hickory Hollow Drive  
Chardon, OH 44024  
Phone: (440) 867-8682  
woodtlw@gmail.com



Don Mosier (2021, Erie County)  
4251 Greenlee Rd.  
McKean, PA 16426  
Phone: (814) 476-7984  
cjdlnmosier@gmail.com

Cindy Barrick (2021)  
49 Huggins Road  
Duncannon, PA 17020  
Phone: (717) 991-1131  
pasnowfamily@gmail.com

# REGIONAL DIRECTORS

## What do Regional Directors do?

Board Member and participate in Board meetings  
Represent clubs in their Region.  
Liaison with the Board  
Help promote snowmobile recreation.  
Ambassadors for snowmobile recreation state-wide  
Help with projects- Power Sport Show, rides  
Contact elected officials as needed

### REGION 1

Chuck Thompson (2021, Erie Co.)  
Corry, PA  
Phone: (814) 462-5613  
chuckthompson@hotmail.com

Richard East (Ass't Director, 2021, Erie Co.)  
Erie, PA  
Phone: (814) 882-7473  
richard.east1949@gmail.com

### REGION 2 VACANT

REGION 3  
David E. McCarty (2020, Westmoreland Co.)  
Export, PA  
Phone: (412) 480-7068  
Twintracker3@aol.com

REGION 4  
Scott Rodick(EAST)  
St. Marys, PA  
Phone: (814) 594-7825  
serodich@windstream.net

Larry Martin (2021, WEST)  
Kittanning, PA  
Phone: (724) 664-5492  
lmartin130@yahoo.com

REGION 5  
Travis Mathna (2020, Adams Co.)  
Gardners, PA  
Phone: (717) 677-8089  
gotsno@embarqmail.com

### REGION 6 VACANT

Nathan Eckhart, CPA (Ass't Director,  
Lehigh Co.)  
Coplay, PA  
Phone: (610) 262-0281  
nsecpa@rcn.com

### REGION 7 VACANT

REGION 8  
Roger Auker (2022, Lancaster Co.)  
Stevens, PA  
Phone: (717) 336-1061  
Fax: (717) 336-0362  
rogerr@dejazzd.com

Doug Blauch (Ass't Director, Lebanon Co.)  
Jonestown, PA  
Phone: 717-383-3559  
blauch@comcast.net

REGION 9  
Tim Holtz (2021, Cambria County)  
Patton, PA  
814-330-2182  
tim1holtz@gmail.com

Randy Green (Ass't Director, Blair County)  
Altoona, PA  
814-946-4829  
greensnow@atlanticbb.net

REGION 10  
Cindy Barrick (2021, Clinton Co.)  
Duncannon, PA  
Phone: (717) 991-1131  
pasnowfamily@gmail.com

REGION 11  
Scott Watkins (2020, Bradford County)  
Columbia Cross Roads, PA  
Phone: 570-297-4018  
Cell: 570-529-5375  
1961watkins@gmail.com

REGION 12  
Clinton LaTourette (2021, Wayne Co.)  
Honesdale, PA  
Phone: (570) 729-7865  
windyview@live.com

SNOW ANGEL CHAIRPERSONS:  
Kelly Watkins  
Phone: (570) 297-4018  
klmwatkins69@gmail.com

Loretta Hayes  
Phone: (412) 496-7615  
mshazey15101@yahoo.com

# PSSA Information

PENNSYLVANIA STATE SNOWMOBILE  
ASSOCIATION, INC.

PO Box 10126

Erie, PA 16514

TOLL FREE: 1-888-411-PSSA (7772)



THE KEYSTONE SNOWMOBILER  
published monthly by PSSA  
MATERIALS DEADLINE  
15th of month preceding the issue

## CONTACT US

Have an article for the Keystone  
Snowmobiler? Send us an email at:  
[member@pasnow.org](mailto:member@pasnow.org) with the subject line  
"Keystone Snowmobiler"

DISCLAIMER: The contents of advertisements which appear in the Keystone Snowmobiler are solely the responsibility of the advertisers. Appearances of an advertisement in the Keystone Snowmobiler does not constitute a recommendation or endorsement by the Keystone Snowmobiler, or the Pennsylvania State Snowmobile Association, of the goods or services offered therein.

PSSA Website:  
[www.pasnow.org](http://www.pasnow.org)

PSSA Facebook  
"Pennsylvania Snowmobiling"  
[www.facebook.com/  
pasnow](http://www.facebook.com/pasnow)

Membership information and  
Keystone Snowmobiler:  
[member@pasnow.org](mailto:member@pasnow.org)  
(717-461-7761)

Grant information:  
Lisa Vallimont  
[lv051066@gmail.com](mailto:lv051066@gmail.com)

General information:  
(717-236-2050 ext. 127)  
[info@pasnow.org](mailto:info@pasnow.org)  
(Toll Free - 1-888-411-PSSA  
(7772))

American Council of  
Snowmobile Associations  
(ACSA)  
[www.snowmobilers.org](http://www.snowmobilers.org)

International Snowmobile  
Manufacturers  
Association (ISMA)  
[www.snowmobile.org](http://www.snowmobile.org)



# PSSA Information

Membership/Finance/  
Communications:  
Kathy Woolever  
Maura Donley

PSSA  
42 West Main Street  
Palmyra, PA 17078  
1-717-461-7761

EMAIL:  
[member@pasnow.org](mailto:member@pasnow.org)

GRANTS  
Lisa Vallimont  
[lv051066@gmail.com](mailto:lv051066@gmail.com)

For a full list of PSSA  
Member Snowmobile Clubs,  
Associate Members, Dealers  
& Accessory Dealer  
Members please visit  
[www.pasnow.org](http://www.pasnow.org)

## PSSA Board Committees

Elizabeth Krug, President,  
Ex-Officio of all Standing Committees

## STANDING COMMITTEES:

Executive, Finance, Trails, Public  
Affairs, Fund Raising, Safety, Website

Executive Committee  
Elected Directors of the Board of Directors  
Elizabeth Krug, President (2022), Chair

Finance Committee  
Arline LaTourette (2020), Chair

Trails Committee  
Elizabeth Krug (2022), Chair

Fund Raising Committee  
Charles Walter (2021), Chair

Safety Committee  
Don Mosier (2022), Chair

Website Committee  
Kathy Woolever - website administrator  
Larry Martin (2021), Chair

Public Affairs Committee  
Richard Hayes (2020)

# Keystone Snowmobiler

## Advertising Rates 2020/2021

### BASE RATE PER MONTH SEVEN DIGITAL ISSUES AUGUST - FEBRUARY

Full Page - \$500

1/2 Page - \$300

1/4 Page - \$200

#### AD SIZES

Full Page  
10" wide x 13" high

1/2 Page Vertical  
5" wide x 13" high

1/2 Page Horizontal  
10" wide x 6.5" high

1/4 Page Vertical  
5" wide x 6.5" high

1/4 Page Horizontal  
10" wide x 3.25" high

Advertise in all seven digital issues and receive a 10% discount if paid in full.

### PREMIUM ADDITIONS

#### FULL PAGE ADVERTISER RECEIVES:

*Banner ad placement in  
Keystone Snowmobiler monthly  
E- Newsletter  
Website Recognition  
Facebook Thank you*

#### 1/2 PAGE PAGE ADVERTISER RECEIVES:

*Website Recognition  
Facebook Thank you*

#### 1/4 PAGE ADVERTISER RECEIVES:

*Facebook Thank you*

### AUDIENCE SIZE

Monthly Digital Magazine and E-Newsletter distribution : 3100

Website Monthly Traffic August to February: 35,500 Sessions/20,500 Users

Facebook Audience: 11,000



# Give the Gift of Membership!

**Member Information** ( ) New ( ) Renewal Member ID: \_\_\_\_\_

Name or Organization: \_\_\_\_\_

Contact Name for Organization: \_\_\_\_\_ Website for Organization: \_\_\_\_\_

Mailing Address: \_\_\_\_\_ City: \_\_\_\_\_ State: \_\_\_\_\_ Zip: \_\_\_\_\_

County where you live: \_\_\_\_\_ Township where you live: \_\_\_\_\_

Phone: ( ) \_\_\_\_\_ E-Mail (required): \_\_\_\_\_

☐ I ONLY wish to receive the "Keystone Snowmobiler" by email. (You must supply your email address.)

## Membership Category: (PM = Premium Membership)

- |  |  |
|--|--|
| <input type="checkbox"/> Individual Standard (\$25)      | <input type="checkbox"/> Family Standard (\$25)      |
| <input type="checkbox"/> Individual Snow Burst PM (\$45) | <input type="checkbox"/> Family Snow Burst PM (\$45) |
| <input type="checkbox"/> Individual Storm PM (\$65)      | <input type="checkbox"/> Family Storm PM (\$65)      |
| <input type="checkbox"/> Individual Blizzard PM (\$105)  | <input type="checkbox"/> Family Blizzard PM (\$105)  |
| <input type="checkbox"/> Snowmobile Dealer (\$35)        | <input type="checkbox"/> Accessory Dealer (\$35)     |
| <input type="checkbox"/> Associate (\$35)                | <input type="checkbox"/> Snowmobile Club (\$50)      |

Number of Snowmobilers in Family Membership: \_\_\_\_\_ Club Member? Yes ( ) No ( )

Which club(s)? \_\_\_\_\_

Are you willing to assist during snow emergencies? Yes ( ) No ( ) Emergency phone: ( ) \_\_\_\_\_

### Additional Donation to Snow Angel Children's Fund

- ☐ Snow Angel Friend - \$10.00  
☐ Snow Angel Supporter - \$15.00  
☐ Snow Angel Guardian - \$20.00  
☐ Other: \$ \_\_\_\_\_

### Additional Donation to PSSA

Amount: \$ \_\_\_\_\_

TOTAL AMOUNT DUE \$ \_\_\_\_\_

Please make checks payable to "PSSA", and mail to 42 W Main St., Palmyra, PA 17078

For credit card payment please mail or fax to: 866-723-2506

MasterCard ( ) VISA ( ) Acc't No. \_\_\_\_\_ Billing Zip Code: \_\_\_\_\_

Exp. Date: \_\_\_\_\_ Signature: \_\_\_\_\_ CVV: \_\_\_\_\_

Dues and donations to PSSA are not deductible as a charitable expense on your Federal Income Tax Return.  
They may be deductible as trade or business expenses if ordinary and necessary in the conduct of your business.