

The Official Publication of the Pennsylvania State Snowmobile Association

Keystone Snowmobiler



January 2021
Volume 2 Issue 1

www.pasnow.org



Happy New Year!

PSSA Survey

How can PSSA better serve you?

The Pennsylvania State Snowmobile Association (PSSA) would like to know how we can better serve you or your club. Please take a few minutes to answer a brief survey and leave any closing thoughts you may have to help improve both snowmobiling in Pennsylvania and PSSA membership benefits.

Click here:

<https://tinyurl.com/PSSASurvey>



Thank you!



MOVING FORWARD

January 2021

Many things have happened in 2020. It is easy to have negative thoughts about all that has happened to family, friends or snowmobile recreation. When we are down we need to count our blessings (family, friends, clubs, volunteers, PSSA)! Spending time outdoors refreshes the soul!

Pennsylvania recently experienced two huge snow events – parts of the state received 15-23 or more inches of snow. However we must remember that conditions have to be right for groomers to be out. Most importantly trails need a solid base – preferably frozen ground and snow. Special thanks to the volunteer groomers who are up at 4am or 11pm to groom trails. Well groomed trails make for an enjoyable ride. Please send pictures of your “groomer group” to the Keystone Snowmobiler.

The “word” of snow travels fast. Even before the first storm passed the area I received at least 20 calls from snowmobilers from Ohio, Indiana, Michigan, Wisconsin and New York. This was also true for the second storm. The number one question was “where can we ride” followed by “where can we buy a map” and “where can we park?” These questions demonstrate the importance of club information being current on the PSSA website: www.pasnow.org

Even though our website contains much information it may be difficult for the unfamiliar to navigate it. If you are one of these people then the easy way to find club information is to click on the DIRECTORY TAB across the top on the HOME screen. Click on “Pennsylvania Snowmobile Clubs” on the drop down menu. A map of PA appears. Click on the area you have an interest in riding. Club information populates below the map. It may help to check with the club whose trails you are going to ride before you go on that ride.

PSSA provides the website: www.pasnow.org and Facebook page: “Pennsylvania Snowmobiling” at www.facebook.com/pasnow

Continued...

MOVING FORWARD

Pennsylvania has Reciprocal agreements with many states. One exception is New York. Check with your state if you are from out of state. PA has a Registration Fee but no Trail Permit. Contact the Department of Conservation and Natural Resources (DCNR) at: www.dcnr.pa.gov/Recreation or call 717-783-7941 for further information.

If you are interested in riding on trails on state land refer to the DCNR website listed above. Also contact the Allegheny National Forest (ANF) at: www.fs.usda.gov for trails there. Volunteer clubs help groom and maintain much of these trails. Contact individual clubs in Region Four as noted on our website: www.pasnow.org

Don't forget to Join a club and join PSSA.

Unfortunately during these storms several roads were plowed to the ground. These were in high traffic snowmobile areas. Word is that this was done by subcontractors. This is no excuse. Their contracts are supposed to contain a clause directing them to leave several inches of snow on the ground. If you witness this in an area call DCNR for state trails, ANF for Federal trails and individual clubs for trail on private land. Contact information is on their websites. In addition call the local elected officials. This plowing activity hurts the local economy.

Also renegade snowmobilers have been riding on private property and ignoring closed trail signs in/around Clinton County. This is an unsafe situation for landowners and causes problems with landowners. This illegal riding has to STOP. Stay on the marked trail and ride Safe.

If necessary call the State Police and report illegal riding.

Reminders:

The Allegheny National Forest is working with the clubs in that region to install snow cameras. Although PSSA has several cameras on its website we need more coverage of snow conditions across the state. Information concerning Club Snow Cameras appears below the PSSA cameras on the HOME page of the website. If a club has a snowcam that you would like PSSA to add to the website contact member@pasnow.org

Continued...

MOVING FORWARD

You can help PSSA by asking Businesses to give a 10% discount to PSSA members. This discount can help reduce the bill significantly for those who take weekend trips / buy accessories. Contact Arline LaTourette (arlinedutton@hotmail.com) for more information.

Thank you to those who took the time to answer our Survey. The PSSA Survey is on the website and Facebook. Please take the time to complete it. Your voice counts.

The Board will be discussing and analyzing your responses and moving forward with viable suggestions.

At this time of year members are looking for ways to help others. The Snow Angel Medical Fund is available for donations. The money donated is used to help defray expenses of children under 18. Contact Loretta Hayes (mshazey15101@yahoo.com) or Kelly Watkins (kimwatkins69@gmail.com) for more info concerning how to apply for a grant. Donations should be sent to the Palmyra Office. Thank you.

It is also a great time to donate to your organization PSSA. Contact the Palmyra office for details.

PSSA is in need of several Regional Directors. Regional Directors are our voice in their area and represent the clubs. Directors are needed for Region Six – Carbon County area, Region Seven – Potter and Tioga County area and Region Ten – Clinton County area. Contact Rich Hayes, Vice-President (rahazey@yahoo.com) or myself (ottilia@roadrunner.com) if you are interested or know of someone who would be a help to the clubs in the area and PSSA. Your help is appreciated.

The PSSA Board continues to meet by way of ZOOM.

Ride Safe and Respect Landowner Property.

MANY BLESSINGS FOR THE NEW YEAR!

Liz Krug, President

Marienville Trail Riders News

The Marienville Trail Riders Snowmobile Club has installed 7 culvert pipes along trail 11 which is located in the middle of the Allegheny National Forest. Thanks to a DCNR min grant from the Pennsylvania State Snowmobile Association, the cooperation of the ANF service personnel, Howe Township supervisors and again the conscientious work ethic of businessman Dan Zimmerman and Minard Oil, the club was able to accomplish the majority of this work in just two days.

This past May the club, with the help of the same above associates were able to install two new culverts and reposition two others as well as hauling in over 100 ton of stone and gravel. In the spring or fall of 2021, the club plans on hauling in 142 ton of stone and 65 ton of gravel to smooth the seven new pipes. This 3 mile of trail is a multi-use trail being used as an ATV and snowmobile trail. So, the club may wait until after the ATV trails close in October of 2021 before hauling in the stone and gravel. The Trail Riders were also able to replace a culvert on private property across from The Forest Lodge where trail 11 crosses state route 66. This work will make it much nicer for groomer operators Dan Stevenson, who runs the clubs Bombardier BR 180 and Joe Rogers who operates the clubs Track Truck groomer. The club would like to especially thank club members Ted and Deb LaStitis for picking up the pipe from Kittanning and delivering to Marienville. Thanks to Ray and Rick Bish for delivering the pipe to the job site. And a special thanks to Bob Harris for his work with his Kubota, Jerry Thornton and his Kubota, Hank Bauer for his expertise on the Minard Oil donated backhoe. And speaking of cooperation, a special thanks to Jason Snell and Gary Davis from Minard Oil Company.



Marienville Trail Riders News

On December 13th, 12 club members met at the groomer barn and cleared trails and hung trail signs on trail ANF 1, trail connectors 12, 28, 11, 14, & 15. This work should make riding on these trails much safer. Thank you Joe LaClair, Joe Lamaraoux, Dave Timothy, Al Miller, Rex Duncan, Justin Duncan, Ray Bish, Mike Sgro, Dan Stevenson and Joe Rogers.

The Marienville Trail Riders have also installed a trail camera at the new Marienville Public Library and interested people can check out the trail camera by logging on to the Marienville Trail Riders Snowmobile Club website. This camera was replaced last year by PSSA and the old one had been at the Barrel House restaurant at Lantz's corners. The club would like to thank Steve Matsherz, from PSSA, for his technical support in getting the camera to work. The Marienville Trail Riders with the assistance of Larry Martin from the Forest County Snowmobile Club had a few miles of their trails mowed this past November. The MTRSC is looking forward to their Michigan trip coming up February 14-21. The club has over 40 members going with 8 lodges being rented at Pine Bluff Resort in Curtis Michigan. Two years ago, the club had good enough weather to enjoy a ride across the ice bridge to Mackinac Island. This will be the third year for the club to enjoy the UP.

One final note, the Marienville Trail Riders want to encourage all snowmobilers to join a club on their behalf and more importantly join the Pennsylvania State Snowmobile Association. It is through these memberships of individual clubs and PSSA that we are able to fund grants as well as gathering support for proper legislation needed to keep our sport in good standing. Back in November, our club had a virtual meeting with the other local clubs, Forest County Snowmobile Club, Highland Snow seekers and the Willows out of Bradford, and the ANF personnel. Liz Krug, from PSSA also joined in and had some very positive comments that we all benefitted from receiving. Respectively. To; Terry Wood, Rich Hays and Norm Strotman, thank you for doing what you for the clubs that you volunteer for. Keep up the good work! EVERYONE, THINK SNOW!!!!



Dan Stevenson groomer



Ray Bish N Hank Bauer



Pipe 4 installed

Reciprocity with Other States

Did you know that other states that have snowmobile and ATV programs will recognize Pennsylvania's registration program. In our region for example, Pennsylvania registrations are recognized in New Jersey, New York, Ohio and Vermont. To view the full list of states with reciprocity with PA, visit this link on our website:

<https://www.pasnow.org/reciprocity/>

Please be aware that PSSA cannot guarantee the accuracy of this data.



HAVE SOME CLUB NEWS?

Many thanks to all the snowmobile clubs that have submitted news and information. We encourage all clubs to send us information each month. Here's how to submit your news for publication:

Email address: member@pasnow.org

SUBJECT LINE: KEYSTONE SNOWMOBILER

Include: Full name of your club in the email

Pictures: jpeg/png format

DEADLINE: 20TH OF THE MONTH PRIOR TO PUBLICATION

MARIENVILLE TRAIL RIDERS SMC

National Forest Products Helps Snowmobilers

National Forest Products President, Ron Songer gave the Marienville Trail Riders Snowmobile Club permission to park at his business location during the weekends. Club members Jerry Beichner and Jerry Thornton met with Mr. Songer on the 21 of December and then met with Jenks Township supervisor Gregg Geyer to mark out the best path to get to the railroad tracks. This additional parking should make it better for snowmobilers and residents. The Knox-Kane railroad tracks is a multiuse trail for hikers, bikers, and other wintertime enthusiast, including snowmobilers. The tracks intersect with trail 12 three miles north of Marienville. This will allow snowmobilers and the club to groom in that direction without being on Greely Farm road or Lamonaville road. Once again, snowmobilers can help by joining a local club and Pennsylvania State Snowmobile Association (PSSA).

The Marienville club would like thank the patrons that live on Oak lane for allowing a trail access in front of their homes. This marked trail leads from the Hotels south of Marienville directly to the railroad tracks. The club would like to especially thank Jenks Township for their cooperation and the Minard Oil Company out of Bradford , Pa. Minard Oil does very little plowing on their access roads and have allowed the club to use their equipment to help maintain the trails. They have an office at Pigeon which is in the middle of our trail system.



MRT SMC (CONT)

National Forest Products President, Ron Songer gave the Marienville Trail Riders Snowmobile Club permission to park at his business location during the weekends. Club members Jerry Beichner and Jerry Thornton met with Mr. Songer on the 21 of December and then met with Jenks Township supervisor Gregg Geyer to mark out the best path to get to the railroad tracks. This additional parking should make it better for snowmobilers and residents. The Knox-Kane railroad tracks is a multiuse trail for hikers, bikers, and other wintertime enthusiast, including snowmobilers. The tracks intersect with trail 12 three miles north of Marienville. This will allow snowmobilers and the club to groom in that direction without being on Greely Farm road or Lamonaville road. Once again, snowmobilers can help by joining a local club and Pennsylvania State Snowmobile Association (PSSA).

The Marienville club would like thank the patrons that live on Oak lane for allowing a trail access in front of their homes. This marked trail leads from the Hotels south of Marienville directly to the railroad tracks. The club would like to especially thank Jenks Township for their cooperation and the Minard Oil Company out of Bradford , Pa. Minard Oil does very little plowing on their access roads and have allowed the club to use their equipment to help maintain the trails. They have an office at Pigeon which is in the middle of our trail system.



RIDING CHECKLIST

The 20/21 riding season is officially open (except for Game Lands and a few other limitation). With the sledding season underway, many of us will think they're ready but, they have overlooked the trailer. Here's a quick checklist to maybe review. But don't wait an hour before you're ready to head out and find out you have an issue:

- 1) Lights— Plug lights into tow vehicle and confirm they're working. Mice like to chew on them.
- 2) Tires— Check the pressure. Over summer some air may have leaked out.
- 3) Wheel Bearings. — If greasable give them a shot of grease. Also raise off ground and check for play or movement.
- 4) Brakes— rotate tires to confirm brakes are not seized to drums.
- 5) Jack—Be sure you can raise, lower and swivel are working properly.
- 6) Ramps—Make sure ramps are in position and properly secured.
- 7) Straps—Make sure all your straps are there. They seem to get borrowed over the off season.
- 8) Battery—install (if on charger) check breakaway box for proper operation
- 9) Emergency equipment— Spare tire inflated, jack, flares, wheel chocks, spare fuel and shovel
- 10) Registration— make sure trailer is registered

This simple checklist may help you from having the last minute rush to get things done and help avoid issues while traveling. After all, you don't want to end up like the snowmobiler in these pictures.

Submitted by: Robert Housley



UPDATE FROM REGION 10

Centre, Clinton, Lycoming, Snyder, Northumberland, Montour and Union Counties

Good news if you are riding the Bald Eagle State Forest and looking for a place to eat and a legal, safe way to get there.

You have a new 1.62 mile trail that opens on January 17, 2021, the Hog Farm – Buttorff Trail (see trail map). This connector trail takes you from the Bald Eagle State Forest's "Demo Forest" parking lot, located at the intersection of Stony Run and Hog Farm Roads, through State Game Lands (SGL) 317, across private land, crossing State Route (SR) 45 and continuing across private land to Boomerang's Bar & Grille, Millmont, PA.

In February 2020, I was contacted by Matt Beaver, District Forester in the Bald Eagle State Forest, to help facilitate conversations between the Bald Eagle Snow Riders (BESR), the Pennsylvania State Game Commission (PGC), Pennsylvania Department of Transportation (PennDOT), Hartley Township, and two private landowners, the Buttorff brothers. For too many years, snowmobilers have disregarded posted signage to prevent riding of a non-designated state forest road (Stony Run Road), which also has winter maintenance performed by a permanent private landowner, for approximately 1,000 feet to a non-designated and hazardous crossing of SR45. In addition, sleds would then travel illicitly across private properties to access Boomerang's.

I had scheduled our first meeting to take place in March 2020 but had to postpone until May 2020 due to Governor Wolfe's mandate for State Government Offices to be closed to the public and hold no in person meetings due to the Covid-19 pandemic. During this meeting, I met with Rodney Mee, PGC Land Manager, Steve Shreckengast, BESR President, and Matt. We walked the existing SGL 317 trail to familiarize Rodney with the trail and discuss the BESR's request to utilize the trail during snowmobile season only. He stated that because SGL 317 was not purchased with the restricted account Pittman-Roberson Act federal fund, he could take the request back to headquarters and ask for approval. Any lands that have been purchased with Federal Pittman-Roberson funds are restricted to habitat, wildlife and hunting focuses. Recreational use of lands, such as snowmobiling, would have been prohibited as is the case on other sections of SGL 317 which were purchased with PR funds.

Continued...

UPDATE FROM REGION 10 (CONT)

By August 2020, Rodney had endorsement from PGC headquarters to be able to access SGL 317 during snowmobile season. The Bald Eagle Snow Riders then signed a Memorandum of Understanding (MOU) with the PGC for a five-year period, to have access and maintain the existing trail and place snowmobile signage on SGL 317. At the end of five years, the MOU will be reviewed and provided the Bald Eagle Snow Riders have met all obligations for maintaining, signing and litter pick up the MOU should be extended.

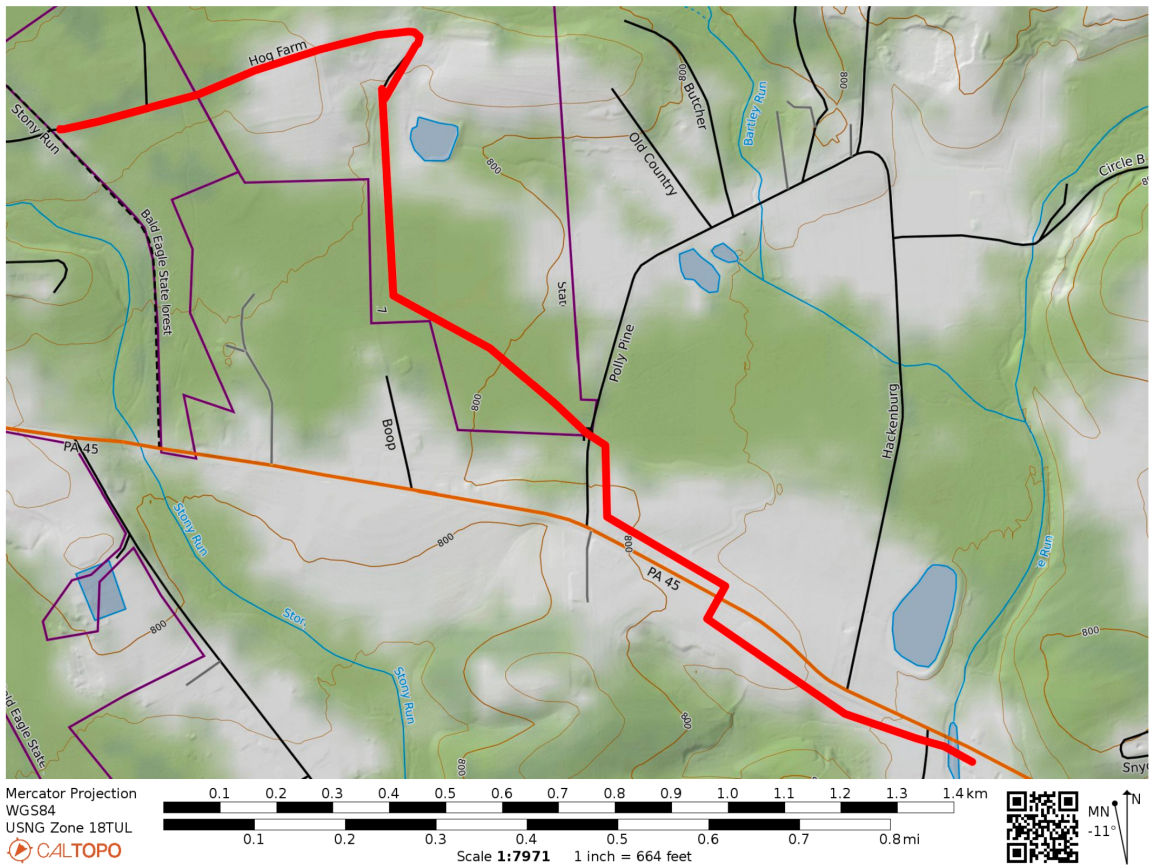
The next step was to engage with PennDOT to get approval to place a snowmobile crossing on State Route 45. In September 2020, Daniel "Dewey" Waugh, PennDOT Permit Supervisor, and Hartley Township Supervisor Rudy Lyons, and Steve Buttorff, private landowner Steve, Matt and I met to determine if we could find a crossing location that complies with PennDOT requirements of 562 feet of sight clearance in each direction to cross SR 45. It took three tries at various locations, but Dewey met the challenge with flying colors. Speaking of flying, we had to stand on along SR 45 for 3 hours until we found just the right spot. I now understand why Matt was concerned to begin with!

Once Dewey determined a location and Hartley Township and the Steve Buttorff agreed, the application for a permit was submitted and approved. In addition to allowing use of his private land, Steve graciously donated a culvert pipe, a backhoe and the work involved to install and make a better grade for the on/off location of the trail to cross SR 45.

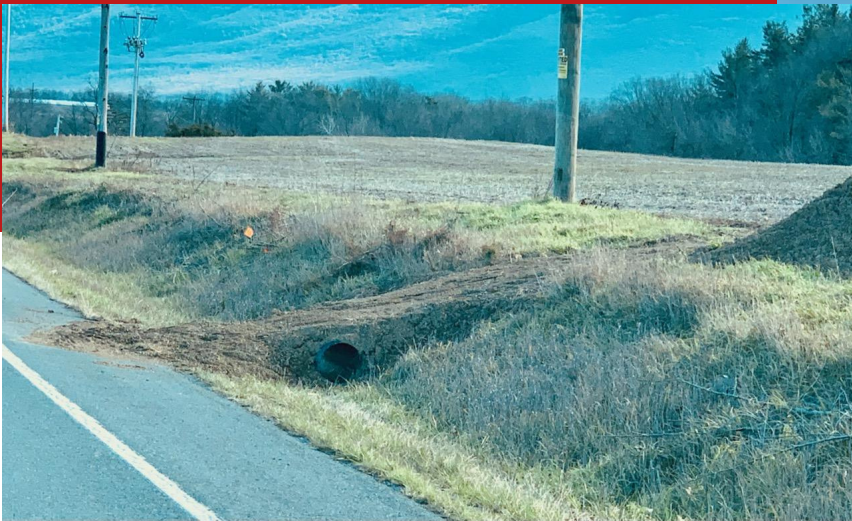
Now that BESR had a signed MOU in place, and the PennDOT application for permit was submitted, the club applied for a PSSA mini-grant to help offset the costs of all the necessary signage and posts needed to properly and legally designate the trail. BESR received notification in October they had been awarded a mini-grant in the amount of \$3,600. Just in time for their November work detail that was set up to get the new trail brushed back and properly signed.

Continued...

UPDATE FROM REGION 10 (CONT)



UPDATE FROM REGION 10 (CONT)



UPDATE FROM REGION 10 (CONT)

If you are wondering why this article is so long, it was because I wanted you to understand everything that is involved in obtaining new trail permissions. It is a process that takes time and willingness of state and local agencies along with private landowners to work together to achieve a common goal. It is why we say riding trails is a privilege and not a right, give respect to the work and people involved that help to bring about new trails so we can keep them for years to come.

For me, this was a new process and I learned valuable lessons along the way. I am also told for PSSA, working with the PGC was a first as well. I cannot thank the various state and local agencies, Bald Eagle Snow Riders and private landowner's enough for their willingness to work with me. Together we accomplished a lot in a very short amount of time.

Respectfully submitted,
Cindy Barrick



ACSA CALENDAR CONTEST

Order your 2021 ACSA Calendar through PSSA today!

Make check payable to "ACSA" and mail to :
PSSA

P.O. Box 10126
Erie, PA 16514

Calendars will only be mailed to one address.

For only a \$20 donation to ACSA, the 2021 calendar offers you 366 chances to win—over \$14,500 in prizes! Only 3,000 calendars printed. Name of winner is returned to ACSA to be part of the next drawing and all subsequent drawings. Cash prizes will be awarded by check. Winners need not be present
Prizes will be mailed promptly.

GLENDALAKE SMC

A belated Merry Christmas and Happy New Year!

Hopefully you've been out riding already this year. Many of our club members have and they've been reporting the conditions on our Facebook page. Fair to excellent riding has been reported at Prince Gallitzin SP, Black Moshanon SP, RB Winter SP, Hyner Mt to Colton Pt, and the Laurel Highlands. It's been a great year to ride early in PA and hopefully that continues. Hopefully you've had the chance to enjoy it.

If you haven't renewed your club membership or you want to promote new and better trails in our area, please join/renew now. It's only thru strong memberships does trail work get done. Same thing for joining PSSA, now's the time.

The Club had its annual meeting and December meeting on December 7th at the huge Holtz Skeet Building so that social distancing could be maintained. Election of Officers was help with the election of a new secretary and two new Board Members. Club membership now stands at 181 but that will drop if we have non-renews for 2021. Club insurance was paid for 6 months.

Trail work and development continues. Several more trail work days were held that included the completion of the Shomo Run Trail thru the Prince Gallitzin State Park. This trail is now complete with mining belt and side rails added to the bridge and signage posted. The early snow allow this trails to be run for the first time. Construction materials for this trail came the club's general fund and from DCNR surplus. The club is extremely proud of the work done on this trail that included mapping, engineering and design, and construction. Over 600 volunteer hours went into its completion.

And please don't forget that our Club Trail from Prince Gallitzin State Park to Black Moshanon State Park doesn't open until Jan 17th since it's on PA State Game Lands. Snowmobiling on PA Game lands isn't permitted till that time. Using any Game Land Trail before that times puts the trail's use in jeopardy.

GLENDALE LAKE (CONT)

Just another reminder that we're asking all Club members and all PA Snowmobilers to complete the online survey of snowmobiling needs in PA: <https://www.pasnow.org/how-can-pssa-better-serve-you/>

Check us out on FaceBook: <https://www.facebook.com/GLSMClub/> Or check out our Group at: <https://www.facebook.com/groups/864367483745347/> . Club membership applications and maps can be found on the Group page. Please join or renew, we need your membership to be able to continue to do all the great things we're doing for the area and the sport.

Our Club is located in south central PA, about 1.5 hours east of the Laurel Highlands and about 45 minutes west of Black Moshanon State Park. We're not far from Ebensburg and Altoona. If you're from this area or ride in this area, we urge you to join our club. We meet the first Monday of the month, year round at 7:?? PM at the Patton Sportsman's Club or TBA. We have a great time at our Club Meetings. We take care of business and swap some real good sled stories. Come join us. Stay safe till then.

Randy Green
Glendale Lake SMC
Glendalelakesmc@gmail.com



SNOWMOBILE SAFETY CLASSES

2020-21 MASTER SAFETY CLASS LIST

(sorted by county)

Online Classes:


Official Pennsylvania Snowmobile Safety Course



Snowmobile Safety Classes

If your club is holding a Snowmobile Safety class this Fall/Winter please let us know and we will promote the class in the Keystone Snowmobiler.

Send all the details to member@pasnow.org



Cool Links

Some great riding has already happened this winter. Check out these video's as proof. Just an FYI, you'll need a Facebook account to view them.

<https://www.facebook.com/GLSMClub/videos/397697678149643>

<https://www.facebook.com/GLSMClub/videos/1291025107921830>

<https://www.facebook.com/GLSMClub/videos/213177050384802>

<https://www.facebook.com/WillowCreekSnowmobileClub/videos/pcb.428095611894098/2820367971585685/>

And don't forget the PSSA Facebook page. Now posting events and updates from your local snowmobile club:

<https://www.facebook.com/pasnow>

Reciprocity with Other States

Did you know that other states that have snowmobile and ATV programs will recognize Pennsylvania's registration program. In our region for example, Pennsylvania registrations are recognized in New Jersey, Ohio and Vermont. To view the full list of states with reciprocity with PA, visit this link on our website:

<https://www.pasnow.org/reciprocity/>

Please be aware that PSSA cannot guarantee the accuracy of this data.



HAVE SOME CLUB NEWS?

Many thanks to all the snowmobile clubs that have submitted news and information. We encourage all clubs to send us information each month. Here's how to submit your news for publication:

Email address: member@pasnow.org

SUBJECT LINE: KEYSTONE SNOWMOBILER

Include: Full name of your club in the email

Pictures: jpeg/png format

DEADLINE: 20TH OF THE MONTH PRIOR TO PUBLICATION

PREMIUM MEMBER RECOGNITION

PSSA would like to recognize and thank our members who have invested at the Premium Membership level for the 2021 Membership Year

Blizzard

Andretti Family, Mario Andretti
Barrett, Herb Barrett
Jason Baver
Bendal Family, Larry Bendal
Mike Brower
Brown Family, Richard Brown
Clause Family, Albert Clause
Bruce Cox
Drohan Family, Troy Drohan
Nathan & Ingrid Eckhart
David Enck
Joseph Gochenauer & Family
Steven Gowman
Terry Kline
Krise Family, Timothy Krise
Arline LaTourette
Clinton LaTourette
Larry Martin
Steve Matscherz
Mindler Family, Carl Mindler
Scott Moody
Charles Paige
Michael Petronchak, Jr. & Family
Drew Pierce
Robert Rohrbaugh
Rohrer Family, B. Rohrer
Sell Family, Andy Sell
Sell Family, Robert Sell
Siska Family, Joseph Siska
Specht Family, Frederick Specht
Weiss Family, Julie Weiss
Willard Family, Joe Willard
Terry Wood
Zartman Family, Gene Zartman

Storm

Barndt Family, Paul Barndt
Brier Family, Dana Brier
Chechak Family, Wayne Chechak
Clementoni Family, Michael Clementoni
Cowgill Family, Charlie Cowgill
Thomas Gnegy
Godshall Family, Ken Godshall
Hackenburg Family, Mark Hackenburg
Herr Family, Wayne Herr
Keiter Family, Kenneth & Tabatha Keiter
Kirchner Family, Robert Kirchner
Kistler Family, David Kistler
Lester Lucas
Malec Family, Daniel Malec
McKenney Family, Timothy McKenney
McMinn Family, Richard McMinn
Miller Family, Mr & Mrs Michael Miller
Barry Nolt
Piscanio Family, Jeffrey Piscanio
Scott Rodich
Sklar Family, John Sklar
Steffy Family, Brandon Steffy
Stoltzfus Family, M. Stoltzfus
Strotman Family, Norm Strotman
Matthew Swierzewski & Family
Thomas Family, David Thomas
Tigar Family, Don Tigar jr
Keith Zimmerman & Family

Snow Burst

Adcock Family, David Adcock
Brussell Family, Gerald Brussell
Daniel Christine II
James Clayton
Crowl Family, Dave Crowl
Culnane Family, Billy Culnane
Clark Eckhart
Eichelberger Family, Richard
Eichelberger
Wesley Garman
Herr Family, Jordan Herr
Donald Hess
Randy Kilmer, Randy Kilmer
King Family, Bob & Judy King
Lake Family, Bill Lake
Landis Family, Randy Landis
Joseph Lanzetta
Paul Littleford
Jacob Marinkov
Miller Family, Bryan Miller
Mark Nelson
Orengia Family, Joseph Orengia
Salen Family, Troy Salen
John Sarginger
Kevin Snoke
Stroble Family, Ron Stroble
Frank Thomas
Michael Walsh
Weisheit Family, Christopher Weisheit
Werkheiser Family, Kevin Werkheiser
Wesley Family, Joseph Wesley
Wolf Family, Doug Wolf
Wolgemuth Family, Wayd Wolgemuth

Thank you!

DONATIONS APPRECIATED

The PA Powersports Show is the #1 way our organization raises money to advocate for and support snowmobiling in Pennsylvania. We are in the process of raising \$20,000 to make up for this loss of income and are asking that you consider a donation to PSSA in addition to your membership dues. Please also consider a monetary donation in lieu of your usual PA Powersports Auction item if you've supported us this way in the past. We would be very grateful.

Your donation will be used to help PSSA establish and maintain important connections with local clubs to exchange ideas and share important technical information and education on all snowmobile areas of interest. PSSA also works with both federal and state government agencies to preserve and enhance trails and riding opportunities. Our focus includes preserving our natural resources and the environment as well as advocating for the safety and general welfare of snowmobiling. You can make a difference for the good of snowmobiling in Pennsylvania when you send in your donation with your membership dues and raffle ticket funds! Together, let's ensure that all snowmobilers can have safe, fun, and available trails to ride in Pennsylvania!



LOOKING FOR TRAIL CONDITIONS?

Here's what to do:

Check in with the local snowmobile club!

For a list of clubs in PA click [HERE!](#)

Check out the information DCNR has [HERE!](#)

Visit our [WEBCAMS](#) page for a first hand view!



**NORTHERN
OUTDOORS**
The Forks, Maine

**MAINE'S ONLY
FULL-SERVICE
SLED RESORT
WITH BREWERY**

Ride

Late model 1 and 2 person snowmobile rentals *
Direct access to 13,000 miles of groomed ITS trails * 2 Tucker Sno-Cat trail groomers on-site means smooth trails right from your cabin door

Rest

Trailside guest houses and cabins to accommodate 2-14 guests * Giant group hot tub on the deck, aka *The Big Dipper* * All accommodations have satellite TV

Refuel

Premium gas and free WiFi available on-site * Great food and handcrafted ales at the Kennebec River Pub & Brewery



BOOK YOUR TRAILSIDE CABIN NOW:

207.663.4466 NORTHERNOUTDOORS.COM

PSSA BOARD OF DIRECTORS



PRESIDENT

Liz Krug (2021, Erie Co.)
9820 Lake Pleasant Road
Erie, PA 16509
Cell Phone: (814) 464-3971
ottilia@roadrunner.com



VICE-PRESIDENT:

Richard Hayes (2020, Allegheny County)
2485 Parkview Lane
Allison Park, PA 15101
Phone: (412) 735-6716
rahazey@yahoo.com



SECRETARY:

Charles Walter (2021, Wayne County)
171 St Mary Church Rd
Lake Ariel PA 18436
Phone: (570) 689-4788
Cell: (570) 877-0244
walter.charles
@rocketmail .com



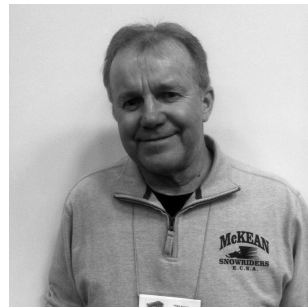
TREASURER:

Arline LaTourette (2020, Wayne County)
792 Torrey Road
Honesdale, PA 18431
Phone: (570) 729-7865
arlinedutton@hotmail.com

DIRECTORS



Terry Wood (2021)
8622 Hickory Hollow Drive
Chardon, OH 44024
Phone: (440) 867-8682
woodtlw@gmail.com



Don Mosier (2021, Erie County)
4251 Greenlee Rd.
McKean, PA 16426
Phone: (814) 476-7984
cjdlnmosier@gmail.com

Cindy Barrick (2021)
49 Huggins Road
Duncannon, PA 17020
Phone: (717) 991-1131
pasnowfamily@gmail.com

REGIONAL DIRECTORS

What do Regional Directors do?

Board Member and participate in Board meetings
Represent clubs in their Region.
Liaison with the Board
Help promote snowmobile recreation.
Ambassadors for snowmobile recreation state-wide
Help with projects- Power Sport Show, rides
Contact elected officials as needed

REGION 1

Chuck Thompson (2021, Erie Co.)
Corry, PA
Phone: (814) 462-5613
chuckthompson@hotmail.com

Richard East (Ass't Director, 2021, Erie Co.)
Erie, PA
Phone: (814) 882-7473
richard.east1949@gmail.com

REGION 2 VACANT

REGION 3
David E. McCarty (2020, Westmoreland Co.)
Export, PA
Phone: (412) 480-7068
Twintracker3@aol.com

REGION 4
Scott Rodich (EAST)
St. Marys, PA
Phone: (814) 594-7825
serodich@windstream.net

Larry Martin (2021, WEST)
Kittanning, PA
Phone: (724) 664-5492
lmartin130@yahoo.com

REGION 5
Travis Mathna (2020, Adams Co.)
Gardners, PA
Phone: (717) 677-8089
gotsno@embarqmail.com

REGION 6 VACANT

Nathan Eckhart, CPA (Ass't Director,
Lehigh Co.)
Coplay, PA
Phone: (610) 262-0281
nsecpa@rcn.com

REGION 7 VACANT

REGION 8
Roger Auker (2022, Lancaster Co.)
Stevens, PA
Phone: (717) 336-1061
Fax: (717) 336-0362
rogerr@dejazzd.com

Doug Blauch (Ass't Director, Lebanon Co.)
Jonestown, PA
Phone: 717-383-3559
blauch@comcast.net

REGION 9
Tim Holtz (2021, Cambria County)
Patton, PA
814-330-2182
tim1holtz@gmail.com

Randy Green (Ass't Director, Blair County)
Altoona, PA
814-946-4829
greensnow@atlanticbb.net

REGION 10
Cindy Barrick (2021, Clinton Co.)
Duncannon, PA
Phone: (717) 991-1131
pasnowfamily@gmail.com

REGION 11
Scott Watkins (2020, Bradford County)
Columbia Cross Roads, PA
Phone: 570-297-4018
Cell: 570-529-5375
1961watkins@gmail.com

REGION 12
Clinton LaTourette (2021, Wayne Co.)
Honesdale, PA
Phone: (570) 729-7865
windyview@live.com

SNOW ANGEL CHAIRPERSONS:
Kelly Watkins
Phone: (570) 297-4018
klmwatkins69@gmail.com

Loretta Hayes
Phone: (412) 496-7615
mshazey15101@yahoo.com

PSSA Information

PENNSYLVANIA STATE SNOWMOBILE ASSOCIATION, INC.

PO Box 10126

Erie, PA 16514

TOLL FREE: 1-888-411-PSSA (7772)



THE KEYSTONE SNOWMOBILER published monthly by PSSA MATERIALS DEADLINE

15th of month preceding the issue

CONTACT US

Have an article for the Keystone
Snowmobiler? Send us an email at:
member@pasnow.org with the subject
line "Keystone Snowmobiler"

DISCLAIMER: The contents of advertisements which appear in the Keystone Snowmobiler are solely the responsibility of the advertisers. Appearances of an advertisement in the Keystone Snowmobiler does not constitute a recommendation or endorsement by the Keystone Snowmobiler, or the Pennsylvania State Snowmobile Association, of the goods or services offered therein.

**Keystone Snowmobiler Magazine ©2021
All Rights Reserved**

PSSA Website:
www.pasnow.org

PSSA Facebook
"Pennsylvania
Snowmobiling"
[www.facebook.com/](http://www.facebook.com/pasnow)
pasnow

Membership information
and Keystone Snowmobiler:
member@pasnow.org

Grant information:
Lisa Vallimont
lv051066@gmail.com

General information:
info@pasnow.org
Toll Free – 1-888-411-PSSA

American Council of
Snowmobile Associations
(ACSA)
www.snowmobilers.org

International Snowmobile
Manufacturers
Association (ISMA)
www.snowmobile.org

PSSA Information

**Membership/Finance/
Communications:
Kathy Woolever
Maura Donley**

**PSSA
42 West Main Street
Palmyra, PA 17078**

**EMAIL:
member@pasnow.org**

**GRANTS
Lisa Vallimont
lv051066@gmail.com**

**For a full list of PSSA
Member Snowmobile
Clubs, Associate
Members, Dealers &
Accessory Dealer
Members please visit
www.pasnow.org**

PSSA Board Committees

**Elizabeth Krug, President,
Ex-Officio of all Standing Committees**

**STANDING COMMITTEES:
Executive, Finance, Trails, Public
Affairs, Fund Raising, Safety, Website**

**Executive Committee
Elected Directors of the Board of Directors
Elizabeth Krug, President (2022), Chair**

**Finance Committee
Arline LaTourette (2020), Chair**

**Trails Committee
Elizabeth Krug (2022), Chair**

**Fund Raising Committee
Charles Walter (2021), Chair**

**Safety Committee
Don Mosier (2022), Chair**

**Website Committee
Kathy Woolever - website administrator
Larry Martin (2021), Chair**

**Public Affairs Committee
Richard Hayes (2020)**

Keystone Snowmobiler

Advertising Rates 2020/2021

BASE RATE PER MONTH SEVEN DIGITAL ISSUES AUGUST - FEBRUARY

Full Page - \$500

1/2 Page - \$300

1/4 Page - \$200

AD SIZES

Full Page
10" wide x 13" high

1/2 Page Vertical
5" wide x 13" high

1/2 Page Horizontal
10" wide x 6.5" high

1/4 Page Vertical
5" wide x 6.5" high

1/4 Page Horizontal
10" wide x 3.25" high

Advertise in all seven digital
issues and receive a 10% discount
if paid in full.

PREMIUM ADDITIONS

FULL PAGE ADVERTISER RECEIVES:

*Banner ad placement in
Keystone Snowmobiler monthly
E- Newsletter
Website Recognition
Facebook Thank you*

1/2 PAGE PAGE ADVERTISER RECEIVES:

*Website Recognition
Facebook Thank you*

1/4 PAGE ADVERTISER RECEIVES:

Facebook Thank you

AUDIENCE SIZE

Monthly Digital Magazine and E-
Newsletter distribution : 3100

Website Monthly Traffic August to
February: 35,500 Sessions/20,500
Users

Facebook Audience: 11,000



Give the Gift of Membership!

Member Information () New () Renewal Member ID: _____

Name or Organization: _____

Contact Name for Organization: _____ Website for Organization: _____

Mailing Address: _____ City: _____ State: _____ Zip: _____

County where you live: _____ Township where you live: _____

Phone: () _____ E-Mail (required): _____

☐ I ONLY wish to receive the "Keystone Snowmobiler" by email. (You must supply your email address.)

Membership Category: (PM = Premium Membership)

- | | |
|--|--|
| <input type="checkbox"/> Individual Standard (\$25) | <input type="checkbox"/> Family Standard (\$25) |
| <input type="checkbox"/> Individual Snow Burst PM (\$45) | <input type="checkbox"/> Family Snow Burst PM (\$45) |
| <input type="checkbox"/> Individual Storm PM (\$65) | <input type="checkbox"/> Family Storm PM (\$65) |
| <input type="checkbox"/> Individual Blizzard PM (\$105) | <input type="checkbox"/> Family Blizzard PM (\$105) |
| <input type="checkbox"/> Snowmobile Dealer (\$35) | <input type="checkbox"/> Accessory Dealer (\$35) |
| <input type="checkbox"/> Associate (\$35) | <input type="checkbox"/> Snowmobile Club (\$50) |

Number of Snowmobilers in Family Membership: _____ Club Member? Yes () No ()

Which club(s)? _____

Are you willing to assist during snow emergencies? Yes () No () Emergency phone: () _____

Additional Donation to Snow Angel Children's Fund

- ☐ Snow Angel Friend - \$10.00
☐ Snow Angel Supporter - \$15.00
☐ Snow Angel Guardian - \$20.00
☐ Other: \$ _____

Additional Donation to PSSA

Amount: \$ _____

TOTAL AMOUNT DUE \$ _____

Please make checks payable to "PSSA", and mail to 42 W Main St., Palmyra, PA 17078

For credit card payment please mail or fax to: 866-723-2506

MasterCard () VISA () Acc't No. _____ Billing Zip Code: _____

Exp. Date: _____ Signature: _____ CVV: _____

Dues and donations to PSSA are not deductible as a charitable expense on your Federal Income Tax Return.
They may be deductible as trade or business expenses if ordinary and necessary in the conduct of your business.