

The Official Publication of the Pennsylvania State Snowmobile Association

Keystone Snowmobiler



©

January 2023

www.pasnow.org

Happy
New
Year!





MOVING FORWARD

January 2023

HAPPY NEW YEAR!

MAY YOUR NEW YEAR BE FILLED WITH MANY BLESSINGS THROUGH OUT THE YEAR!

The Pennsylvania State Snowmobile Association (PSSA) continues to meet with representatives of the Department of Conservation and Natural Resources (DCNR).

Personnel from DCNR will make another presentation ("A Night with PSSA/DCNR") to PSSA members on Wednesday January 11, 2023 beginning at 7pm. You must register for this meeting. Your Questions/Concerns/Ideas can be noted on the register form. They will then be shared with Board members to research and provide comments or answers to the above during this meeting. Your comments/ideas are always welcome.

Several new snow cameras were purchased through a DCNR grant and are now in operation throughout the state. You can find them on the PSSA website:

www.pasnow.org Check snow conditions before you start your ride. Thank you to the clubs who applied for these cameras and have made them operational.

Several of the PSSA Board members have been researching a possible mapping program called "Map Gears". Rob Housley, Randy Green, Arline LaTourette and Clinton LaTourette have been presenting this program to DCNR. It is the hope of PSSA that this or a similar program will be adopted across the state. This or another program would help make trail conditions seamless across the thousands of miles of trails in Pennsylvania. Information meetings continue.

A Legislative Ride is being planned for some time in February. The International Snowmobile Manufacturers Association (ISMA) through Ed Klim, Executive Director, provided the funds to make this ride possible. Thank you. Volunteers will be needed to help make this Ride a success. Contact Lori Elliott, Grant Administrator for more information.

MOVING FORWARD

Those areas where plowing of roads remains an issue should discuss this with elected representatives of the municipality where the problem occurs. It would be better if snowmobilers attended several meetings in advance of the riding season. These municipalities are in need of your help and understanding. Offer to help where you can.

The PSSA Board also voted to return to in-person annual meetings. The date of **April 15, 2023** is set. The site and time will be determined in the near future. Plan to attend.

Finally, Daryl Busch, President of the Presque Isle Snowmobile Club of Erie County, was nominated and elected to replace Terry Wood on the Executive Board. Daryl will finish Terry's term of three years.

Think Snow!

Liz Krug, President of PSSA



Mark your Calendars!

A Night with PSSA/DCNR
Wednesday, January 11, 2023
7 p.m. - 8:30 p.m.
[Register HERE!](#)

Wales Sno-Drifters
Poker Run Jan 29, 2023 with a no-snow date of Feb 5, 2023

PSSA Annual Meeting
April 15, 2023

HAVE SOME CLUB NEWS?

Many thanks to all the snowmobile clubs that have submitted news and information. We encourage all clubs to send us information each month. Here's how to submit your news for publication:

Email address: member@pasnow.org

SUBJECT LINE: KEYSTONE SNOWMOBILER

Include: Full name of your club in the email

Pictures: jpeg/png format

DEADLINE: 20TH OF THE MONTH PRIOR TO PUBLICATION



FOLLOW US ON SOCIAL



Webcams!

Many thanks to all the snowmobile clubs for sharing and maintaining these webcams. We've been working to update the page so that we're ready for snow! CHECK THEM OUT!



Hilltop Howlers



NEPA Snowtrails



Prince Gallitzin State Park
Beaver Valley Marina Snowmobile Parking Lot



Prince Gallitzin State Park
Beaver Valley Marina Snowmobile Trail

The PA Snowseekers Celebrate Breakfast with Santa

The PA Snowseekers brought in the Holiday Season by celebrating Breakfast with Santa on Saturday, December 10, 2022. Santa, along with one of his helper Elf's, joined us at Saint Paul's Lutheran Church in Zelienople, PA. We had over 30 children and over 40 members, parents and guests attend.

The Breakfast began with members arriving early to start cooking eggs, breakfast meats, pancakes, French toast and other items as well. The guests arrived and the kids started a craft where they made a miniature Santa Christmas Sack filled with candy canes and other decorations. Breakfast was served and I'm sure everyone over ate just like Santa. Once breakfast was completed, one of our members gathered all the kids up to the stage and read "The Night Before Christmas".

Santa and his helper Elf arrived and, needless to say, the place erupted with excitement. Santa sat with each child, shared a story and presented them with a gift. The smiles were priceless!

It truly was a special day and I would like to thank Loretta Hayes, who was the Event Coordinator, as well as our members that worked hard in planning and executing the Breakfast. Without their efforts, it just doesn't happen!

Larry H Mosier
President PA Snowseekers
Imosier75@outlook.com



PA Snowseekers SMC



Dutch Trail Cutters - 50th Year

by Henry Hartman

In the fall of 2021, we started to tell you about the history of the Lancaster County based Dutch Trail Cutters Snowmobile Club, which was formed in early 1971. Here is a flashback from 50 years ago.

The Lititz, PA newspaper, the Record Express, recently re-ran a news item from 50 years ago. The Nov. 23, 1972 issue featured the photo included with this article. That year, Dutch Trail Cutters member Jack Conrad provided a new snowmobile for Santa Claus to arrive in downtown Lititz. Jack owned a business called Eastern Mobile Mills at Rothsville and was a Ski-Doo dealer from about 1969 thru 1973. That same business continues today, now simply called EMM Sales & Service, located at Brownstown. The consensus of current club members is that this was most likely a 1973 model Ski-Doo "Silver Bullet" machine. The identity of the person portraying Santa? That's a mystery!

Today, 50 years later, the Dutch Trail Cutters are still a 100% PSSA club! Every member of the club is also a member of the State organization, supporting snowmobiling across the entire Commonwealth. In future articles, we will reveal how the clubhouse was built. The Dutch Trail Cutters Snowmobile Club has memberships available. If you are an active snowmobiler and would like more information, write to: DTC, c/o Ervin Nolt 10 North Hershey Ave. Leola, PA 17540 or call 717-633-5051.

50 Years Ago
Thursday's Record Express
Nov. 23, 1972
• **New Ride for St. Nick**
— Santa Claus will arrive in Lititz at 10 a.m. this Saturday morning and he'll be arriving on his brand new snowmobile. He will ride his Snowmobile from Michael's TV on South Broad Street to his castle on East Main Street.
Santa's Castle will be open this year from 5 p.m. to 8 p.m. on Friday evenings and on Saturday mornings at 11 a.m. until 4 p.m. and Santa will have a special surprise for each of his visitors.



Region 10 Update

Centre, Clinton, Lycoming, Snyder, Northumberland, Montour and Union Counties

A week or so before Christmas, wind and ice left its mark across the 195,000-acre Bald Eagle State Forest, but it's worse in the area of RB Winter State Park. This storm hit Thursday night and into Friday, therefore the downed trees and debris quickly became a trail hazard for weekend riders.

What I watched through social media was nothing short of miraculous! Several members of the Central PA Snowmobile Trails Conditions group on FaceBook went to work organizing volunteers to show up and help clear debris until Forestry personnel could be contacted Monday morning to apprise them of the situation. On Monday, once Forestry personnel was notified and began their work, these volunteers continued to help throughout the following week to clear as many trails as possible before Christmas. Folks from all over volunteered to help with tree removal by bringing chainsaws and sweat equity. It was great to see the snowmobile community come together to help. I am not surprised by this in the least, we are a great community after all.

This potentially dangerous situation, however, made both District Forest personnel and me realize, volunteers are out helping with chainsaws and downed trees at their own risk, unless you are registered as a DCNR Conservation Volunteer. By being registered as a DCNR Conservation Volunteer you are then covered under the Commonwealth of PA Workmen's Compensation Policy.

It is very easy to register, it's a onetime registration that you can do it as a club or as an individual.

If as a Club, the Club will register using the Club's information and then list all members of their club on the volunteer list. There will be no need for each member of the club to do their own registration so long as they are listed as a club member. This will cover any member of the club anytime the Club is out doing work in the State Forest. If you are not a member of a club, then you will register as an Individual. Although, I encourage you to join a Club, as so many Clubs need help to continue operations both during the snowmobile season and the off season.

Region 10 Update

You can sign up as a DCNR Conservation Volunteer on the DCNR website at <https://www.volunteers.dcnr.state.pa.us> There will be a link on the left-hand side of the page "Conservation Volunteer Application". In addition, please contact the State Forest District Office where you'd like to volunteer and ask for the Volunteer Coordinator. See contact information for the State Forest and State Parks following this article.

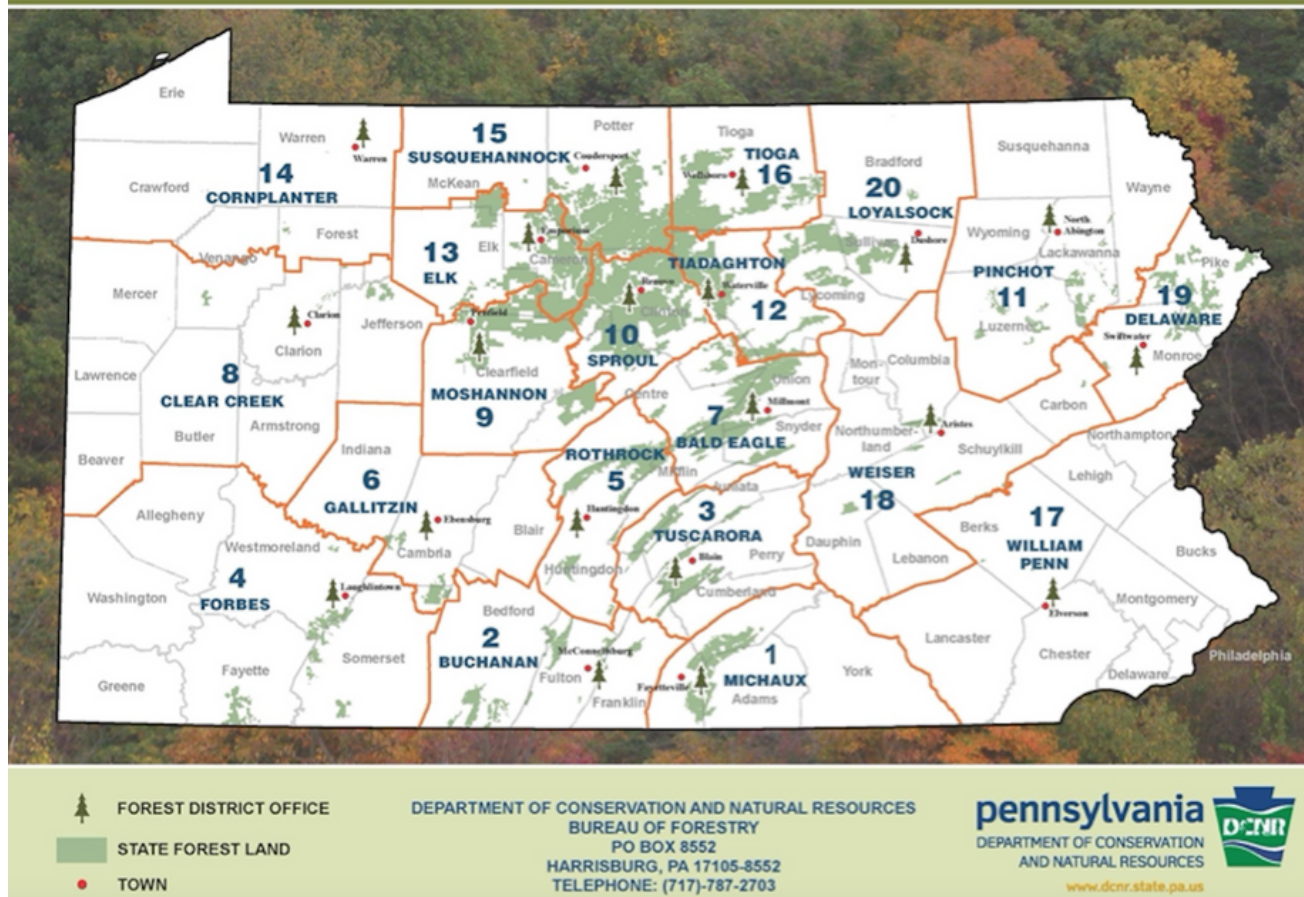
It is also very important to work with the District Forester or Park Manager to gain approval for any work to be done prior to starting any project within a State Forest.

Respectfully submitted,
Cindy Barrick



Region 10 Update

Pennsylvania State Forest Districts



FOREST DISTRICT OFFICES

Pennsylvania Department of Conservation and Natural Resources
 Bureau of Forestry

Forest District Number & Name	Address	Telephone Number
1 - Michaux	10099 Lincoln Way East, Fayetteville, PA 17222-9609	717-352-2211
2 - Buchanan	25185 Great Cove Road, McConnellsburg, PA 17233-8204	717-485-3148
3 - Tuscarora	4455 Big Spring Road, Blain, PA 17006-6173	717-536-3191
4 - Forbes	P.O. Box 519, Laughlintown, PA 15655-0519	724-238-1200
5 - Rothrock	181 Rothrock Lane, Huntingdon, PA 16652-1100	814-643-2340
6 - Gallitzin	155 Hillcrest Drive, Ebensburg, PA 15931-0506	814-472-1862
7 - Bald Eagle	18865 Old Turnpike Road, Millmont, PA 17845-9376	570-922-3344
8 - Clear Creek	158 South Second Avenue, Clarion, PA 16214-2404	814-226-1901
9 - Moshannon	3372 State Park Road, Penfield, PA 15849-1722	814-765-0821
10 - Sproul	15187 Renovo Road, Renovo, PA 17764-9521	570-923-6011
11 - Pinchot	1841 Abington Road, North Abington, PA 18414-9785	570-945-7133
12 - Tiadaghton	10 Lower Pine Bottom Road, Waterville, PA 17776-9678	570-753-5409
13 - Elk	258 Sizerville Road, Emporium, PA 15834-3944	814-486-3353
14 - Cornplanter	323 North State Street, North Warren, PA 16365-4867	814-723-0262
15 - Susquehannock	P.O. Box 673, Coudersport, PA 16915-0673	814-274-3600
16 - Tioga	One Nessmuk Lane, Wellsboro, PA 16901-9700	570-724-2868
17 - William Penn	845 Park Road, Elverson, PA 19520-9523	610-582-9660
18 - Weiser	16 Weiser Lane, Aristes, PA 17920-0315	570-875-6450
19 - Delaware	2174A Route 611, Swiftwater, PA 18370-9723	570-895-4000
20 - Loyalsock	6735 Route 220, Dushore, PA 18614-8101	570-946-4049

MIXING UP SNOWMOBILES AND AVIATION

By Henry & Peggy Hartman

Readers of the Keystone Snowmobiler who have been PSSA members for any length of time recall that the Hartman family has interests in several areas, particularly snowmobiling and aviation. Any chance to combine the above mentioned activities are taken advantage of. Each summer since 1987, we travel to Oshkosh, Wisconsin for the annual convention, known as AirVenture, of the Experimental Aircraft Association (EAA). This week-long gathering of aviation enthusiasts from all over the world features a daily afternoon airshow and two night airshows. The night airshows are simply stunning and breathtaking, capped by a spectacular fireworks extravaganza at the conclusion of the evenings' flying activities.

This past July, we were very pleased to see a new snowmobile on display nearly in the shadow of what is, for one week a year, The World's Busiest Control Tower. This same tower oversees more than 10,000 aircraft that arrive for the EAA Convention. The Michelin Company makes tires, as we all know. This includes tires used on airplanes, from the smallest one and two-seaters, to those huge airliners that carry hundreds of passengers. Did you know that Michelin also makes snowmobile tracks? Here's a brief explanation of the connection.

Bombardier, makers of Ski-Doo snowmobiles, had a division back 40+ years ago that made the tracks for their machines. They divested that company around 1982, it was then known as Camoplast and was privately owned. Then in 2015, the name was changed to Camso. In 2018, Camso was purchased by Michelin. All four major snowmobile manufacturers use Camso tracks on various models.

In the accompanying photo, the Michelin display is seen with a snowmobile prominently displayed along with a motorcycle. The display building held a variety of the many tire products that Michelin produces. You could very likely be riding the trails on a Camso-Michelin track!

MIXING UP SNOWMBILES...

While we are writing about the aviation connection, we must mention the Rotax engine factor. The Rotax name is synonymous with snowmobiles, as they have been the engines found in Ski-Doo sleds for more than 50 years. When the ultralight aircraft movement became popular in the early 1980's, Rotax engines were an obvious choice for lightweight, dependable power. Since then, Rotax has developed a line of engines devoted to aircraft, particularly 4-cylinder opposed "boxer" models with liquid cooling and producing horsepower numbers well over 100. They offer both FAA-Certified and experimental versions of these engines.

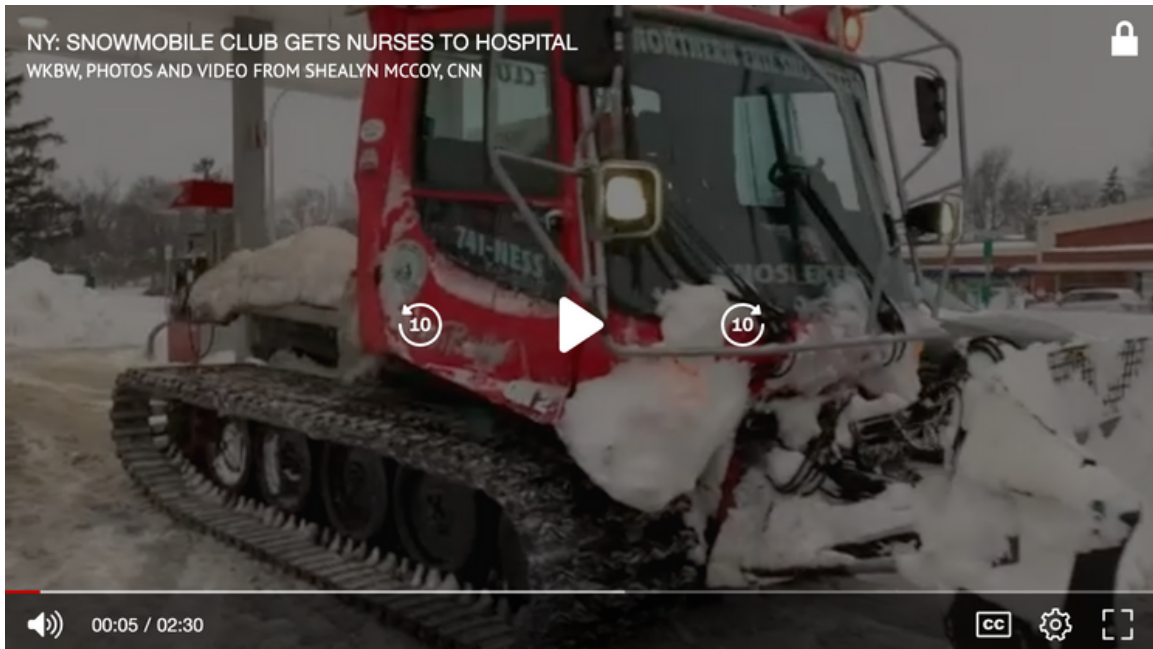
You can visit "<https://www.eaa.org/en/airventure>" for more information, including all the details of this year's AirVenture week, July 24-30, 2023. Last year, roughly 650,000 people attended this world-renowned event. You can make plans now to enjoy one or more days of this convention, whether you are an EAA member or not. While you are in Wisconsin, there are thousands of things to do, including visiting many snowmobile related attractions. Drive about 4 hours north of Oshkosh to Eagle River and spend some time at the World Snowmobile Headquarters. This facility includes the Antique Snowmobile Club of America museum as well as the International Snowmobile Hall of Fame, which your authors are honored to be members of. Right next door to the WSH is the famous Eagle River Derby Track, home to the World's Championship Snowmobile Derby and associated races each January.

In another future article, we'll tell you about our journey to Oshkosh in July of 2022, and how we traveled by way of the Upper Peninsula of Michigan. We went that way to pay a visit to the Top of the Lake Snowmobile Museum at Naubinway, Michigan. Following that most enjoyable time, we drove across the UP and down by Green Bay on the way to Oshkosh for a week of "Aviation Saturation"!



CHECK THIS OUT!

Snowmobile club gets nurses to hospital during winter storm



Snowmobilers Taking The Pledge

The members of the International Snowmobile Manufacturers Association (Arctic Cat, BRP, Polaris, and Yamaha) are joining together again this season with the snowmobile community with the Take The Pledge campaign. The Pledge is designed to ensure snowmobilers protect existing riding areas and trail systems for current and future generations and landowners who give us access to their property. Those that take the pledge agree to the following:

- I Pledge to ride off trail only where I know it's legal and accepted.
- I Pledge to check before going off-trail if I don't know.
- I Pledge to protect access for future generations by doing the right thing.
- I Pledge to protect access by encouraging those I ride with to take the Pledge also.



[READ MORE AND TAKE THE PLEDGE...](#)

SNOWMOBILE SAFETY CLASSES

2023 MASTER SAFETY CLASS LIST

(sorted by county)

Click [HERE](#) for the full list of classes.

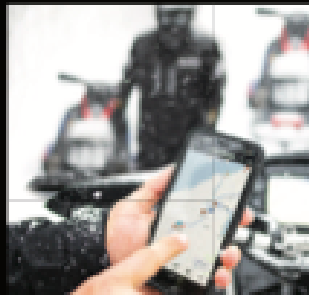
Snowmobile Safety Classes

If your club is holding a Snowmobile Safety class this Fall/Winter please let us know and we will promote the class in the Keystone Snowmobiler.

Send all the details to member@pasnow.org



**SEE THE TRAILS.
TRACK YOUR GROUP.
HAVE MORE FUN.**



**POLARIS
RIDECOMMAND**

KEEP YOUR CREW ON THE MAP
WHILE YOU EXPLORE THE SNOW.

POLARIS
Think Outside

ENHANCE YOUR RIDE TODAY AT [RIDECOMMAND.POLARIS.COM](https://ridecommand.polaris.com)

© 2023 Polaris Industries Inc. Polaris recommends that all riders take a training course. Do not attempt maneuvers beyond your capability. Always wear a helmet and other safety apparel. Never drink and ride.

WHAT DOES PSSA DO?

- Promote snowmobile recreation via Website (www.pasnow.org) and Facebook (www.facebook.com/pasnow "Pennsylvania Snowmobiling")
- PSSA members receive Free Accidental Death and Dismemberment Insurance via Insurance Company Trail Insurance
- Obtain funding to help clubs maintain and groom trails Monitor state and federal issues and send alerts
- Represent snowmobilers on the Snowmobile/ATV Advisory Committee (SAAC) and PA Trails Advisory Committee (PTAC)
- Support volunteer clubs by: Joining a club, participate in activities, offer to help
- Provide funds for trail maintenance/grooming, webcams/images on the PSSA website and GPS units in groomers.
- Support Navigational Signage (GPS) on trails
- Coordinate connectors and new trails
- Encourage Business to join PSSA and provide Discounts to members
- Promote Safe Riding and offer Education and Safety Classes for Youth 10-15
- Host the annual PA Powersport Show provided Dealers have sufficient inventory
- Offer Discounts to members to buy and sell snowmobiles, ATVs, and trailers etc. at our show
- Represent the Association at national events such as: American Council of Snowmobile Associations, United Snowmobile Alliance
- Liaison with elected officials
- Inform members of current issues, trails and legislation etc. via "Keystone Snowmobiler" and Facebook
- Maintain a website: (www.pasnow.org) which contains up-to-date information concerning snowmobile recreation, issues, clubs, legislation and concerns of our members
- Prepares a mini-grant application in support of all clubs Helps clubs prepare other grants when necessary.

DONATIONS APPRECIATED

The PA Powersports Show is the #1 way our organization raises money to advocate for and support snowmobiling in Pennsylvania. We are in the process of raising \$20,000 to make up for this loss of income and are asking that you consider a donation to PSSA in addition to your membership dues. Please also consider a monetary donation in lieu of your usual PA Powersports Auction item if you've supported us this way in the past. We would be very grateful.

Your donation will be used to help PSSA establish and maintain important connections with local clubs to exchange ideas and share important technical information and education on all snowmobile areas of interest. PSSA also works with both federal and state government agencies to preserve and enhance trails and riding opportunities. Our focus includes preserving our natural resources and the environment as well as advocating for the safety and general welfare of snowmobiling. You can make a difference for the good of snowmobiling in Pennsylvania when you send in your donation with your membership dues and raffle ticket funds! Together, let's ensure that all snowmobilers can have safe, fun, and available trails to ride in Pennsylvania!



PREMIUM MEMBER RECOGNITION

Thank you to our Premium Membership investment levels for 2023 Membership Year

Blizzard

Robert J Adamski
Mario Andretti
Jason Bayer
Bendal Family, Larry
Benner Family, Arlin
Brown Family, Richard
Clause Family, Albert
Bruce E. Cox
Drohan Family, Troy
Nathan & Ingrid Eckhart
Gochenauer Family, Joseph
Steven C. Gowman
Brian Gustavson
Iasella Family, Gino
Kistler Family, David
Terry Kline
Timothy Krise
Jim Laird
Arline LaTourette
Clinton C. LaTourette
John W. Manfredi
Martin Family, Larry
Steve Matscherz
Scott Moody
Charles Paige
Perry Family, Joseph
Petronchak Family, Michael
Scott Rodich
Robert Rohrbaugh
Rohrer Family, B.
Saks Family, Will
Douglas J. Sampson
Sell Family, Andy
Sell Family, Robert
Siska Family, Joseph
Norm Strotman
Weiss Family, Julie
Willard Family, Joe
Terry Wood
Zartman Family, Gene
Zimmerman Family, Keith

Storm

Barndt Family, Paul
Michael Cekada
Daniel L Christine II
Clark Family, Douglas
Clementoni Family, Michael
Cowgill Family, Charlie
Thomas Coyer
Wesley Garman
Thomas Gnegy
Godshall Family, Ken
Hackenburg Family, Mark
Keiter Family, Kenneth &
Tabatha
Kirchner Family, Robert
Paul Littleford
Malec Family, Daniel
McKenney Family, Timothy
McMinn Family, Richard
Miller Family, Mr & Mrs Michael
David Miller
Barry Nolt
Piscanio Family, Jeffrey
Andrew Preston
John Sklar
Sowers Family, William
Steffy Family, Brandon
Stoltzfus Family, M.
Swierzewski Family, Matthew
Brian Taylor
Thomas Family, Frank
Thomas Family, David
Tigar Family, Don
Orville Wehr
Robert Wolf
Chris Yerdon

Thank you!

PREMIUM MEMBER RECOGNITION

Thank you to our Premium Membership investment levels for 2023 Membership Year

Snow Burst

David Adcock	Landis Family, Randy
Larry Bean	Joseph W. Lanzetta
Beltrame, Garnet	LaTourette Family, Gerritt
Kenneth Bernstein	Mike Mansfield
Matthew Bollinger	Michael E. McCallips
Brussell Family, Gerald	Brian Miller
Craig Buffington	Bryan Miller
Carter Family, John	Mark Nelson
Cazantzes Family, Eugene	Orengia Family, Joseph
Cisar Family, Alphie	Tim Peiffer
Culnane Family, Billy	Peterson Family, David
Dave Crowl	Ralph Read
Steven Danylko	Wayne Roush
Dolby Family, Nancy	Salen Family, Troy
Clark Eckhart	Mr. Greg T. Sammet
Eichelberger Family, Richard	Craig Sandoe
Rick Emler	Kevin M. Snoke
Jordan Herr	Specht Family, Frederick
Donald Hess	Jason Starr
John Hilbert Sr.	Stroble Family, Ron
John Hilsher	Thompson Family, William
Hiltz Family, Matt	Michael Walsh
Hoffmann Family, Ralph	Micki Weaver
Michael Hyser	Weiser Family, Paul
Martha Kalko	Weisheit Family, Christopher
Kelly Family, William	Thomas Werkheiser
Randy Kilmer	Kevin Werkheiser
Kimble Family, Susan	Wolf Family, Doug
Bob & Judy King	Wolgemuth Family, Wayd
Harald Kofler	

Thank you!

PSSA BOARD OF DIRECTORS



PRESIDENT

Liz Krug (2021, Erie Co.)
9820 Lake Pleasant Road
Erie, PA 16509
Cell Phone: (814) 464-3971
ottilia@roadrunner.com



VICE-PRESIDENT:

Richard Hayes (2020, Allegheny County)
2485 Parkview Lane
Allison Park, PA 15101
Phone: (412) 735-6716
rahazey@yahoo.com

SECRETARY:

Cindy Barrick (2021)
49 Huggins Road
Duncannon, PA 17020
Phone: (717) 991-1131
pasnowfamily@gmail.com



TREASURER:

Arline LaTourette (2020, Wayne County)
792 Torrey Road
Honesdale, PA 18431
Phone: (570) 729-7865
arlinedutton@hotmail.com

DIRECTORS



Terry Wood (2021)
8622 Hickory Hollow Drive
Chardon, OH 44024
Phone: (440) 867-8682
woodtlw@gmail.com



Don Mosier (2021, Erie County)
4251 Greenlee Rd.
McKean, PA 16426
Phone: (814) 476-7984
cjdmosier@gmail.com

Norm Strotman (2021)
474 South Kendall Ave
Bradford, PA 16701
nmstrotman@gmail.com

REGIONAL DIRECTORS

What do Regional Directors do?

Board Member and participate in Board meetings
Represent clubs in their Region.
Liaison with the Board
Help promote snowmobile recreation.
Ambassadors for snowmobile recreation state-wide
Help with projects- Power Sport Show, rides
Contact elected officials as needed

REGION 1

Daryl Busch
McKean, PA
(814) 897-6206
pisc.president@gmail.com

REGION 2

VACANT

REGION 3

David E. McCarty (2020, Westmoreland Co.)
Export, PA
Phone: (412) 480-7068
Twintracker3@aol.com

REGION 4

Scott Rodich (EAST)
St. Marys, PA
Phone: (814) 594-7825
serodich@windstream.net

REGION 5

Travis Mathna (2020, Adams Co.)
Gardners, PA
Phone: (717) 677-8089
gotsno@embarqmail.com

REGION 6

VACANT

Nathan Eckhart, CPA (Ass't Director,
Lehigh Co.)
Coplay, PA
Phone: (610) 262-0281
nsecpa@rcn.com

REGION 7

VACANT

REGION 8

Roger Auker (2022, Lancaster Co.)
Stevens, PA
Phone: (717) 336-1061
Fax: (717) 336-0362
rogerr@dejazzd.com

Doug Blauch (Ass't Director, Lebanon Co.)
Jonestown, PA
Phone: 717-383-3559
blauch@comcast.net

REGION 9

Robert Housley (2021, Cambria County)
Dysart, PA
814-312-6343
pa.snow.rob@gmail.com

Randy Green (Ass't Director, Blair County)
Altoona, PA
814-946-4829
greensnow@atlanticbb.net

REGION 10

Cindy Barrick (2021, Clinton Co.)
Duncannon, PA
Phone: (717) 991-1131
pasnowfamily@gmail.com

REGION 11

Scott Watkins (2020, Bradford County)
Columbia Cross Roads, PA
Phone: 570-297-4018
Cell: 570-529-5375
1961watkins@gmail.com

REGION 12

Clinton LaTourette (2021, Wayne Co.)
Honesdale, PA
Phone: (570) 729-7865
windyview@live.com

Jim Griffin (Ass't Director, Susquehanna County)
Forest City, PA
Phone: (570) 780-9155
jimmiegriff@gmail.com

SNOW ANGEL CHAIRPERSONS:
Kelly Watkins
Phone: (570) 297-4018
klmwatkins69@gmail.com

Loretta Hayes
Phone: (412) 496-7615
mshazey15101@yahoo.com

PSSA Information

PENNSYLVANIA STATE SNOWMOBILE ASSOCIATION, INC.

PO Box 10126

Erie, PA 16514

TOLL FREE: 1-888-411-PSSA (7772)



THE KEYSTONE SNOWMOBILER published monthly by PSSA

MATERIALS DEADLINE

15th of month preceding the issue

CONTACT US

Have an article for the Keystone
Snowmobiler? Send us an email at:
member@pasnow.org with the subject
line "Keystone Snowmobiler"

DISCLAIMER: The contents of advertisements which appear in the Keystone Snowmobiler are solely the responsibility of the advertisers. Appearances of an advertisement in the Keystone Snowmobiler does not constitute a recommendation or endorsement by the Keystone Snowmobiler, or the Pennsylvania State Snowmobile Association, of the goods or services offered therein.

Keystone Snowmobiler Magazine ©2022
All Rights Reserved

PSSA Website:
www.pasnow.org

PSSA Facebook
"Pennsylvania
Snowmobiling"
[www.facebook.com/
pasnow](http://www.facebook.com/pasnow)

**Membership information
and Keystone Snowmobiler:**
member@pasnow.org

Grant information:
Lori Elliott
pssagrants@gmail.com

General information:
info@pasnow.org
Toll Free – 1-888-411-PSSA

**American Council of
Snowmobile Associations
(ACSA)**
www.snowmobilers.org

**International Snowmobile
Manufacturers
Association (ISMA)**
www.snowmobile.org

PSSA Information

**Membership/Finance/
Communications:
Kathy Woolever
Maura Donley**

**PSSA
42 West Main Street
Palmyra, PA 17078**

**EMAIL:
member@pasnow.org**

**GRANTS
Lori Elliott
pssagrants@gmail.com**

**For a full list of PSSA
Member Snowmobile
Clubs, Associate
Members, Dealers &
Accessory Dealer
Members please visit
www.pasnow.org**

PSSA Board Committees

**Elizabeth Krug, President,
Ex-Officio of all Standing Committees**

**STANDING COMMITTEES:
Executive, Finance, Trails, Public
Affairs, Fund Raising, Safety, Website**

**Executive Committee
Elected Directors of the Board of Directors
Elizabeth Krug, President (2022), Chair**

**Finance Committee
Arline LaTourette (2020), Chair**

**Trails Committee
Elizabeth Krug (2022), Chair**

**Fund Raising Committee
Norm Strotman (2022), Chair**

**Safety Committee
Don Mosier (2022), Chair**

**Website Committee
Kathy Woolever - website administrator
Terry Wood (2021), Chair**

**Public Affairs Committee
Richard Hayes (2020)**

Keystone Snowmobiler

Advertising Rates 2021/2022

BASE RATE PER MONTH SEVEN DIGITAL ISSUES AUGUST - FEBRUARY

Full Page - \$500

1/2 Page - \$300

1/4 Page - \$200

AD SIZES

Full Page
10" wide x 13" high

1/2 Page Vertical
5" wide x 13" high

1/2 Page Horizontal
10" wide x 6.5" high

1/4 Page Vertical
5" wide x 6.5" high

1/4 Page Horizontal
10" wide x 3.25" high

Advertise in all seven digital
issues and receive a 10% discount
if paid in full.

PREMIUM ADDITIONS

FULL PAGE ADVERTISER RECEIVES:

*Banner ad placement in
Keystone Snowmobiler monthly
E- Newsletter
Website Recognition
Facebook Thank you*

1/2 PAGE PAGE ADVERTISER RECEIVES:

*Website Recognition
Facebook Thank you*

1/4 PAGE ADVERTISER RECEIVES:

Facebook Thank you

AUDIENCE SIZE

Monthly Digital Magazine and E-
Newsletter distribution : 3100

Website Monthly Traffic August to
February: 35,500 Sessions/20,500
Users

Facebook Audience: 11,000



Give the Gift of Membership!

Member Information () New () Renewal Member ID: _____

Name or Organization: _____

Contact Name for Organization: _____ Website for Organization: _____

Mailing Address: _____ City: _____ State: _____ Zip: _____

Phone: () _____ County where you live: _____

E-Mail (required): _____

Membership Category:

Premium Memberships (PM) will receive special recognition in lieu of gifts from PSSA.

I give permission for my name to be published: Yes () No ()

- | | |
|--|--|
| <input type="checkbox"/> Individual Standard (\$30) | <input type="checkbox"/> Family Standard (\$30) |
| <input type="checkbox"/> Individual Snow Burst PM (\$45) | <input type="checkbox"/> Family Snow Burst PM (\$45) |
| <input type="checkbox"/> Individual Storm PM (\$65) | <input type="checkbox"/> Family Storm PM (\$65) |
| <input type="checkbox"/> Individual Blizzard PM (\$105) | <input type="checkbox"/> Family Blizzard PM (\$105) |
| <input type="checkbox"/> Snowmobile Dealer (\$35) | <input type="checkbox"/> Accessory Dealer (\$35) |
| <input type="checkbox"/> Associate (\$35) | <input type="checkbox"/> Snowmobile Club (\$50) |

Dues and Additional Donations

Dues Total	\$ _____
Snow Angels Children's Fund	\$ _____
Donation to PSSA	\$ _____
Total Amount Due	\$ _____

☐ I agree to abide by the By-Laws and Rules & Regulations of the PA State Snowmobile Association

Application for membership shall be made in writing on the appropriate form containing an agreement by the applicant to abide by the By-Laws and Rules & Regulations of the Association

Club Member? Yes () No () Which club(s)? _____

Are you willing to assist during snow emergencies? Yes () No () Emergency phone: () _____

Please make checks payable to "PSSA", and mail to 42 W Main St., Palmyra, PA 17078

For credit card payment please mail or fax to: 866-723-2506

MasterCard () VISA () Acc't No. _____ Billing Zip Code: _____

Exp. Date: _____ Signature: _____ CVV: _____

Dues and donations to PSSA are not deductible as a charitable expense on your Federal Income Tax Return. They may be deductible as trade or business expenses if ordinary and necessary in the conduct of your business.